



The Timken Company

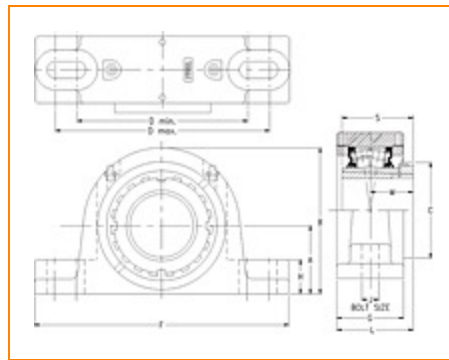
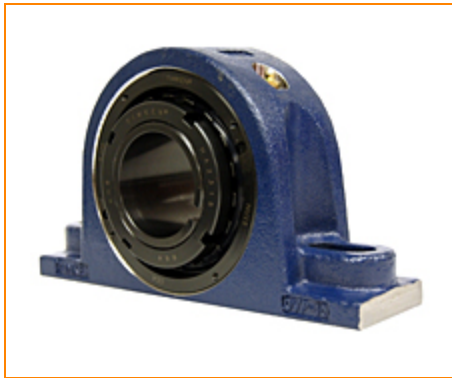
4500 Mt Pleasant St. NW

N. Canton, OH 44720

Phone: (234) 262-3000

E-Mail: CustomerCAD@timken.com • **Web site:** www.timken.com

Part Number TAPN13K060S, Tapered Adapter Two-Bolt Pillow Block



[Specifications](#) | [Dimensions](#) | [Radial and Thrust Factors](#) | [Engineering Seal Speed](#) | [Engineering Bearing Attributes](#) | [Engineering Internal Radial Clearance](#)

Specifications

Engineering Group	Mounted Bearing
Bearing Number	22213
Shaft Size	60.000 mm
Shaft Size Type	Metric
Full Timken Part Number	TAPN13K060SB TAPN13K060SC TAPN13K060SEB TAPN13K060SEC TAPN13K060SEM TAPN13K060SEN TAPN13K060SEO TAPN13K060SET TAPN13K060SM TAPN13K060SN TAPN13K060SO TAPN13K060ST TAPN13K060STHT



Locking Style	Tapered Adapter
Housing Construction	Two-Bolt Pillow Block
UPC Code	0883450132428 0883450132435 0883450132459 0883450132466 0883450132473 0883450132480 0883450132497 0883450132503 0883450197281 0883450197496 0883450274791 0883450274999 0883450460316

Dimensions

Dimension A	3.15 in 80 mm
Dimension B	6.1 in 154.9 mm
Dimension C	3.35 in 85.1 mm
Dimension D Min	7.2 in 182.9 mm
Dimension D Max	9.2 in 233.7 mm
Dimension F	10.31 in 261.9 mm
Dimension G	2.7 in 68.6 mm
Dimension H	1.38 in 35.1 mm

Dimension J (Bolt Size)	0.625 in 16 mm
Dimension L	2.91 in 73.9 mm
Dimension M	1.56 in 39.6 mm
Dimension S	2.56 in 65 mm

Radial and Thrust Factors

C0 - Static Load	48600 lbf 216000 N
C - Dynamic Load (Basic)	46400 lbf 206000 N
e - Geometry Factor	0.24
Y1 - Geometry Factor	2.79
Y2 - Geometry Factor	4.15

Engineering Seal Speed

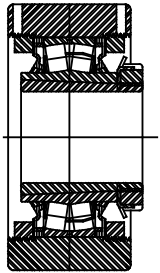
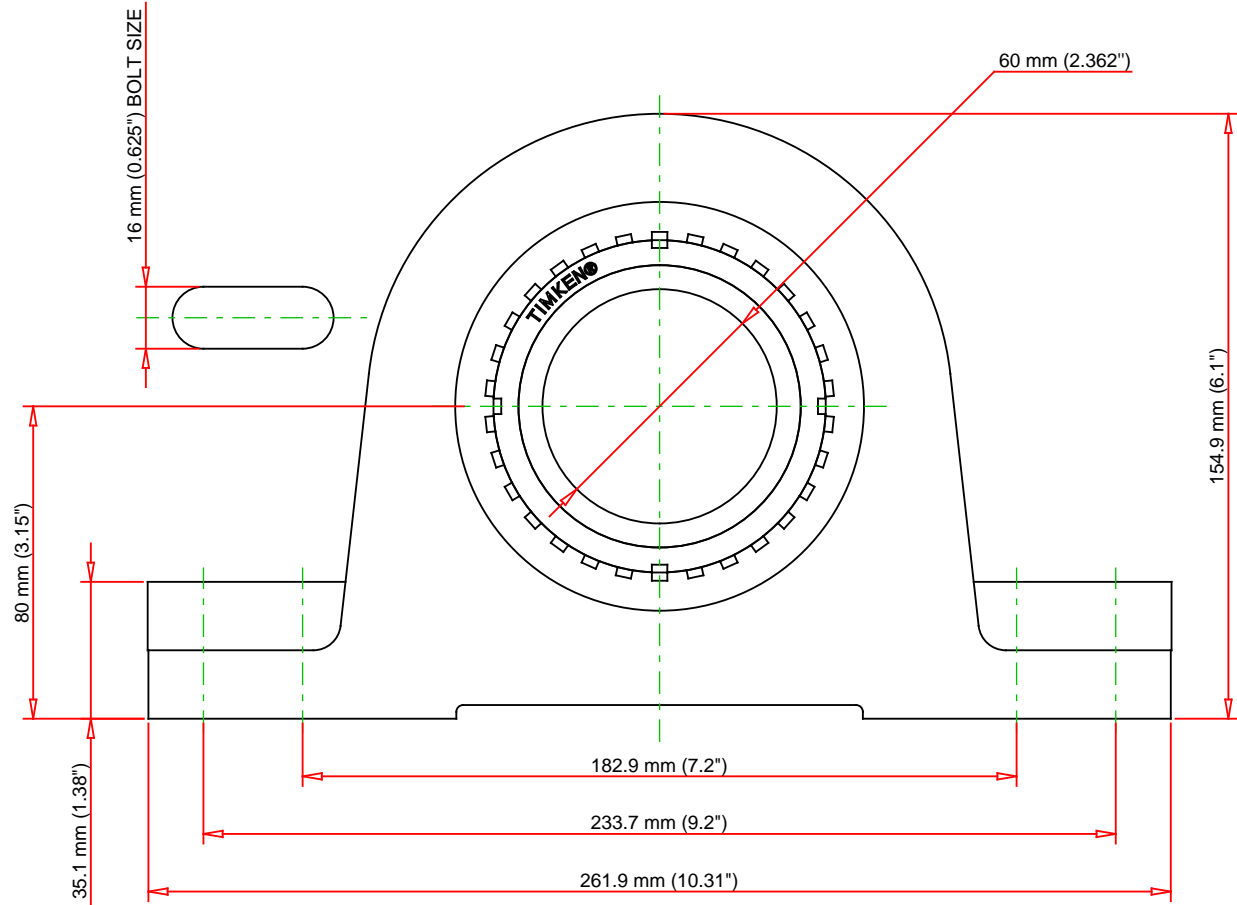
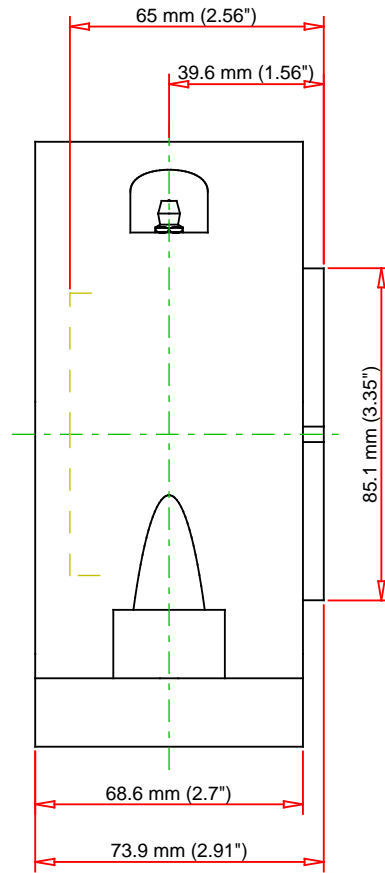
Oil Lubrication - M/N Seal	1800 rpm
Oil Lubrication - T Seal	3200 rpm
Oil Lubrication - B/C/O Seal	1500 rpm
Grease Lubrication - M/N Seal	1800 rpm
Grease Lubrication - T Seal	2800 rpm
Grease Lubrication - B/C/O Seal	1500 rpm

Engineering Bearing Attributes

Float	0.050 in 1.270 mm
Shaft Tolerance	0.0030 in 0.076 mm

Engineering Internal Radial Clearance

Pre Install Clearance Min	0.0030 in 0.075 mm
Pre Install Clearance Max	0.0037 in 0.094 mm



Note: Section View not to Scale

C - Dynamic Load	46400	lbf	206000	N
C0 - Static Load	48600	lbf	216000	N
Weight	23	lb	10.4	kg
Max. Speed T-Seals & Grease	2800	rpm		
Rad. Clearance - Max.	0.0037			

TIMKEN

THE TIMKEN COMPANY
NORTH CANTON, OHIO USA

TAPN13K060S

Tapered Adapter Two-Bolt Pillow
Block

Every reasonable effort has been made to ensure the accuracy of the information contained in this writing, but no liability is accepted for errors, omissions or for any other reason.

FOR DISCUSSION ONLY