

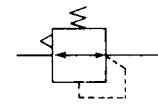
Regulator

AR10 to AR60

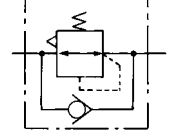
Regulator with Backflow Function

AR20K to AR60K

JIS Symbol
Regulator



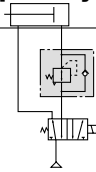
Regulator with
Backflow Function



- With the backflow function it incorporates a mechanism to exhaust the air pressure in the outlet side reliably and quickly.

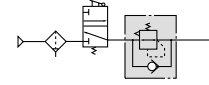
Example 1)

When the pressure in the rear and the front of the cylinder differs:



Example 2)

When the air supply is cut off and releasing the inlet pressure to the atmosphere, the residual pressure release of the outlet side can be ensured for a safety purpose.



How to Order

AR **30** **K** - **03** **BE** - **1NR**

① ② ③ ④ ⑤ ⑥

Made to Order

(Refer to pages 354 and 355 for details.)

- Option/Semi-standard: Select one each for a to g.
- Option/Semi-standard symbol: When more than one specification is required, indicate in alphanumeric order.
Example) AR30K-03BE-1NR

		Symbol	Description	①									
				Body size									
				10	20	25	30	40	50	60			
②	With backflow function	Nil	Without backflow function	●	●	●	●	●	●	●	●		
		K ^{Note 1)}	With backflow function	—	●	●	●	●	●	●	●		
+													
③	Thread type	Nil	Metric thread (M5)	●	—	—	—	—	—	—	—		
			Rc	—	●	●	●	●	●	●	●		
		N	NPT	—	●	●	●	●	●	●	●		
		F	G	—	●	●	●	●	●	●	●		
+													
④	Port size	M5	M5	●	—	—	—	—	—	—	—		
		01	1/8	—	●	—	—	—	—	—	—		
		02	1/4	—	●	●	●	●	—	—	—		
		03	3/8	—	—	●	●	●	—	—	—		
		04	1/2	—	—	—	—	●	—	—	—		
		06	3/4	—	—	—	—	●	●	—	—		
		10	1	—	—	—	—	—	●	●	—		
+													
⑤	a	Mounting	Nil	Without mounting option	●	●	●	●	●	●	●		
			B ^{Note 3)}	With bracket	●	●	●	●	●	●	●	●	
			H	With set nut (for panel fitting)	●	●	●	●	●	—	—	—	
			+										
⑤	b	Pressure gauge	Nil	Without pressure gauge	●	●	●	●	●	●	●		
			E	Square embedded type pressure gauge (with limit indicator)	—	●	●	●	●	●	●	●	
			G	Round type pressure gauge (without limit indicator)	●	—	—	—	—	—	—	—	
				Round type pressure gauge (with limit indicator)	—	●	●	●	●	●	●	●	
		Digital pressure switch	M	Round type pressure gauge (with color zone)	—	●	●	●	●	●	●	●	
				E1 ^{Note 4)}	Output: NPN output / Electrical entry: Wiring bottom entry	—	●	●	●	●	●	●	●
				E2 ^{Note 4)}	Output: NPN output / Electrical entry: Wiring top entry	—	●	●	●	●	●	●	●
				E3 ^{Note 4)}	Output: PNP output / Electrical entry: Wiring bottom entry	—	●	●	●	●	●	●	●
	E4 ^{Note 4)}	Output: PNP output / Electrical entry: Wiring top entry	—	●	●	●	●	●	●	●			

Regulator *Series AR10 to AR60*

Regulator with Backflow Function *Series AR20K to AR60K*



AR20, AR20K AR40, AR40K

		Symbol	Description	1														
				Body size														
				10	20	25	30	40	50	60								
6	Semi-standard	c	Set pressure	Nil ^{Note 5)}	0.05 to 0.85 MPa setting							●	●	●	●	●	●	●
				1 ^{Note 6)}	0.02 to 0.2 MPa setting							●	●	●	●	●	●	●
		+																
		d	Exhaust mechanism	Nil	Relieving type							●	●	●	●	●	●	●
				N	Non-relieving type							●	●	●	●	●	●	●
		+																
		e	Flow direction	Nil	Flow direction: Left to right							●	●	●		●	●	●
				R	Flow direction: Right to left							●	●	●	●	●	●	●
		+																
		f	Knob	Nil	Downward							●	●	●	●	●	●	●
				Y	Upward							●	●	●	●	●	●	●
		+																
		g	Pressure unit	Nil	Name plate and pressure gauge in imperial units: MPa							●	●	●	●	●	●	●
				Z ^{Note 7)}	Name plate and pressure gauge in imperial units: psi							○ ^{Note 9)}	○ ^{Note 9)}	○ ^{Note 9)}	○ ^{Note 9)}	○ ^{Note 9)}	○ ^{Note 9)}	○ ^{Note 9)}
				ZA ^{Note 8)}	Digital pressure switch: With unit conversion function							—	△ ^{Note 10)}	△ ^{Note 10)}	△ ^{Note 10)}	△ ^{Note 10)}	△ ^{Note 10)}	△ ^{Note 10)}

Note 1) The AR10 type comes with a backflow function as a standard feature. (K is not available.) When using the AR10 type as w/ backflow function, backflow may not occur with the set pressure 0.15 MPa or less. Please set the inlet pressure to at least 0.05 MPa higher than the set pressure.

Note 2) Option B, G, H, M are not assembled and supplied loose at the time of shipment.

Note 3) Assembly of a bracket and set nuts (AR10, AR20(K) to AR40(K))
Including 2 mounting screws for the AR50(K) and AR60(K)

Note 4) When choosing with H (panel mount), the installation space for lead wires will not be secured. In this case, select "wiring top entry" for the electrical entry. (Select "wiring bottom entry" when the semi-standard Y is chosen simultaneously.)

Note 5) Only the AR10 has a pressure setting of 0.05 to 0.7 MPa.

Note 6) The only difference from the standard specifications is the adjusting spring for the regulator. It does not restrict the setting of 0.2 MPa or more. When the pressure gauge is attached, a 0.2 MPa pressure gauge will be fitted.

Note 7) For thread type: M5 and NPT. This product is for overseas use only according to the new Measurement Law. (The SI unit type is provided for use in Japan.) The digital pressure switch will be equipped with the unit conversion function, setting to psi initially.

Note 8) For options: E1, E2, E3, E4. This product is for overseas use only according to the new Measurement Law. (The SI unit is provided for use in Japan.)

Note 9) ○: For thread type: M5 and NPT only

Note 10) △: Select with options: E1, E2, E3, E4.

Standard Specifications

Model	AR10	AR20(K)	AR25(K)	AR30(K)	AR40(K)	AR40(K)-06	AR50(K)	AR60(K)
Port size	M5 x 0.8	1/8, 1/4	1/4, 3/8	1/4, 3/8	1/4, 3/8, 1/2	3/4	3/4, 1	1
Pressure gauge port size ^{Note 1)}	1/16 ^{Note 2)}	1/8			1/4			
Fluid	Air							
Ambient and fluid temperature ^{Note 3)}	−5 to 60°C (with no freezing)							
Proof pressure	1.5 MPa							
Maximum operating pressure	1.0 MPa							
Set pressure range	0.05 to 0.7 MPa	0.05 to 0.85 MPa						
Relief pressure ^{Note 4)}	Set pressure + 0.05 MPa [at relief flow rate of 0.1 ℓ/min (ANR)]							
Construction	Relieving type							
Mass (kg)	0.06	0.26	0.21	0.29	0.44	0.47	1.17	1.22

Note 1) Pressure gauge connection threads are not available for F.R.L. unit with a square embedded type pressure gauge (AR20(K) to AR60(K)).

Note 2) Use a bushing (part no:131368) when connecting the R1/8 pressure gauge to the Rc1/16.

Note 3) -5 to 50°C for the products with the digital pressure switch.

Note 4) Not applicable to the AR10.