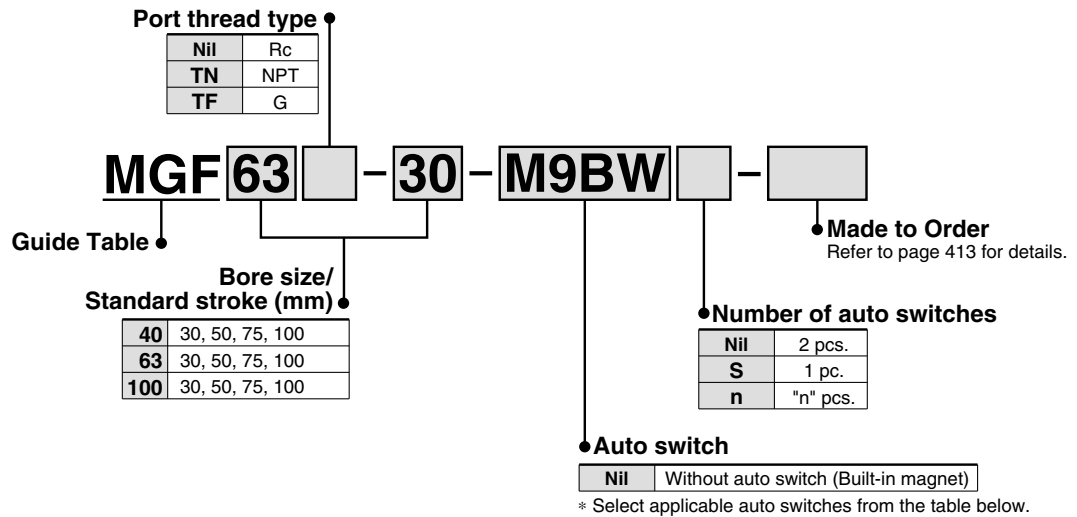


Guide Table

Series MGF

ø40, ø63, ø100

How to Order



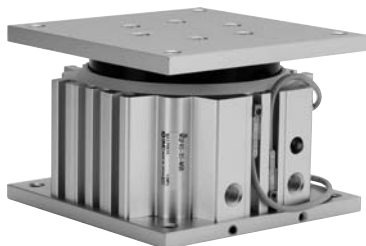
Applicable Auto Switch/Refer to pages 1719 to 1827 for further information on auto switches.

Type	Special function	Electrical entry	Indicator light	Wiring (Output)	Load voltage		Auto switch model		Lead wire length (m)				Pre-wired connector	Applicable load		
					DC	AC	Perpendicular	In-line	0.5 (Nil)	1 (M)	3 (L)	5 (Z)				
Solid state switch	——	Grommet	Yes	3-wire (NPN)	24 V	5 V, 12 V	—	M9NV	M9N	●	●	●	○	○	IC circuit	Relay, PLC
	3-wire (PNP)			12 V		M9PV		M9P	●	●	●	○	○			
	2-wire			12 V		M9BV		M9B	●	●	●	○	○			
	Diagnostic indication (2-color indication)			3-wire (NPN)		5 V, 12 V		M9NWV	M9NW	●	●	●	○	○	IC circuit	
	3-wire (PNP)			12 V		M9PWV		M9PW	●	●	●	○	○			
	Water resistant (2-color indication)			2-wire		12 V		M9BWV	M9BW	●	●	●	○	○	—	
				3-wire (NPN)		5 V, 12 V		M9NAV	M9NA	○	○	●	○	○	IC circuit	
				3-wire (PNP)		12 V		M9PAV	M9PA	○	○	●	○	○		
				2-wire		12 V		M9BAV	M9BA	○	○	●	○	○	—	
Reed switch	——	Grommet	Yes	3-wire (NPN equivalent)	—	5 V	—	—	Z76	●	—	●	—	—	IC circuit	—
	No		2-wire	24 V	12 V	100 V	—	Z73	●	—	●	—	—	—	IC circuit	Relay, PLC
						100 V or less	—	Z80	●	—	●	—	—			

* Lead wire length symbols: 0.5 m Nil (Example) M9NW
1 m M (Example) M9NWM
3 m L (Example) M9NWL
5 m Z (Example) M9NWZ

* Solid state auto switches marked with "○" are produced upon receipt of order.
* ○ : D-A9□/A9□V cannot be mounted.

* Since there are other applicable auto switches than listed, refer to page 419 for details.
* For details about auto switches with pre-wired connector, refer to pages 1784 and 1785.
* Auto switches are shipped together (not assembled).



Made to Order Specifications
(For details, refer to page 1847.)

Symbol	Specifications
—XC79	Machining tapped hole, drilled hole and pin hole additionally

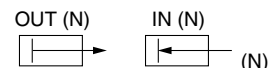
Specifications

Bore size (mm)	40	50	60
Action	Double acting		
Fluid	Air		
Proof pressure	1.5 MPa		
Maximum operating pressure	1.0 MPa		
Minimum operating pressure	0.1 MPa		
Ambient and fluid temperature	−10 to 60°C		
Piston speed	20 to 200 mm/s		
Cushion	Rubber bumper on both ends		
Lubrication	Non-lube		
Stroke length tolerance	$+1.0$ 0 mm		

Standard Stroke

Model	Standard stroke (mm)	Intermediate stroke
MGF 40	30, 50, 75, 100	As for the intermediate strokes (by the 5 stroke interval) other than the standard strokes at left are manufactured by means of installing a spacer with the width of 5, 10, 15, 20, 25 mm. Example) In the case an MGF63-15 specification is required, a spacer of 15 mm is installed in the MGF63-30. The full length dimension when the cylinder is retracted is the same as that of 30 mm stroke.
MGF 63		
MGF100		

Theoretical Output



Bore size (mm)	Rod size (mm)	Operating direction	Piston area (mm ²)	Operating pressure (MPa)									
				0.2	0.3	0.4	0.5	0.6	0.7	0.8	0.9	1.0	
40	25	OUT	1256	251	376	502	628	753	879	1004	1130	1256	
		IN	765	153	229	306	382	459	535	612	688	765	
63	36	OUT	3117	623	935	1246	1558	1870	2182	2493	2805	3117	
		IN	2099	419	629	839	1049	1259	1469	1679	1889	2099	
100	36	OUT	7853	1570	2356	3141	3926	4711	5497	6282	7067	7853	
		IN	6835	1367	2050	2734	3417	4101	4784	5468	6151	6835	

Note) Theoretical output (N) = Pressure (MPa) x Piston area (mm²)

Mass

Model	Bore size (mm)	Standard stroke (mm)				(kg)
		30	50	75	100	
MGF 40	40	2.1	2.6	3.2	3.8	
MGF 63	63	4.3	5.1	6.1	7.1	
MGF100	100	7.0	8.2	9.6	11.0	

MGJ

MGP

MGQ

MGG

MGC

MGF

MGZ

MGT

D-□

-X□

Individual
-X□