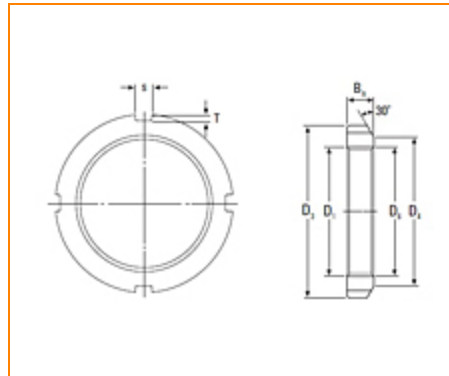




**The Timken Company**  
 4500 Mt Pleasant St. NW  
 N. Canton, OH 44720  
**Phone:** (234) 262-3000

**E-Mail:** [CustomerCAD@timken.com](mailto:CustomerCAD@timken.com) • **Web site:** [www.timken.com](http://www.timken.com)

## Part Number KM 30, Metric Locknut

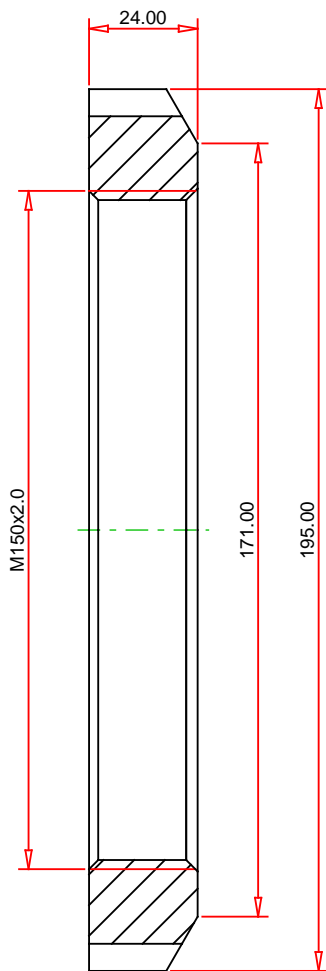
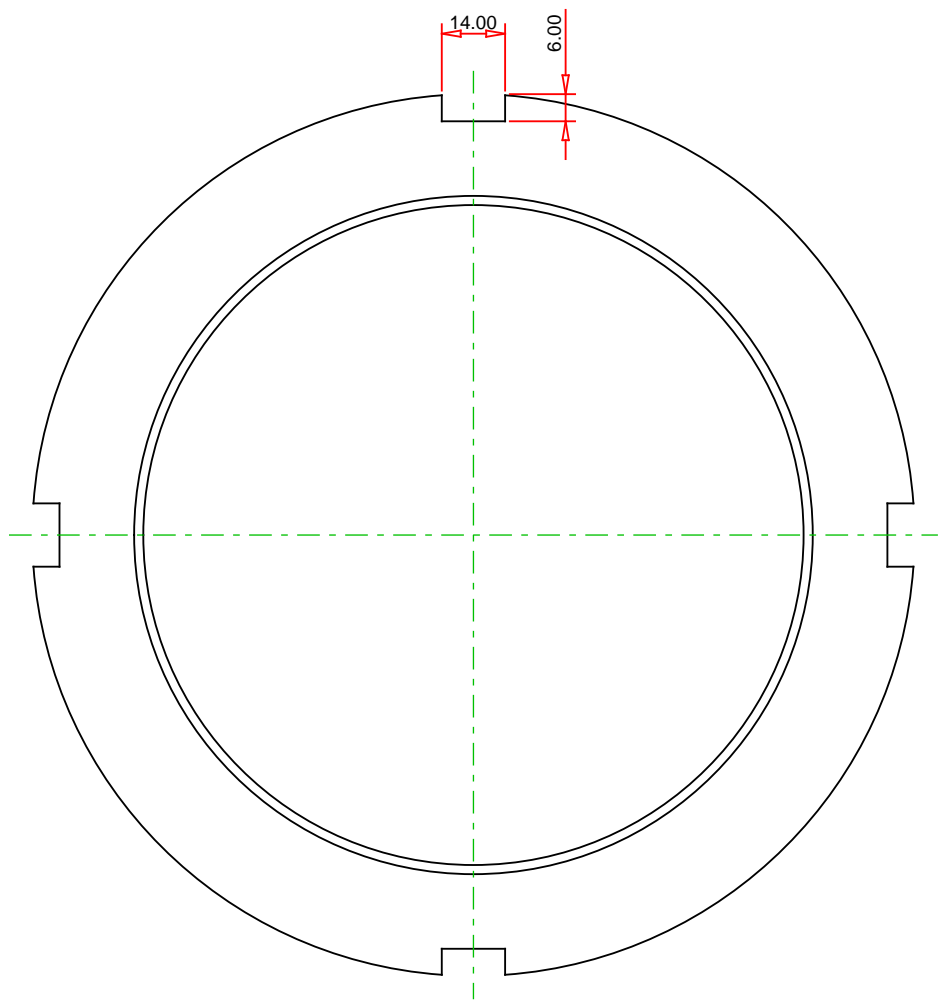


### Specifications

Thread $D_1$ <sup>1</sup>	M150x2.0
$D_3$	195 mm
$D_4$	171 mm
$B_n$	24 mm
s	14 mm
T	6 mm
Weight	2.03 Kg
Lockwasher	MB 30

<sup>1</sup> Means metric thread and the digits are major diameter of thread and pitch.

Tr means 30°; trapezoid thread and the digits are major diameter of thread and pitch.



METRIC UNITS

**TIMIKEN®**

**THE TIMKEN COMPANY**  
NORTH CANTON, OHIO USA

**KM 30**  
Metric Locknut