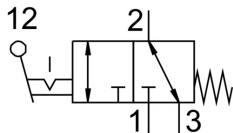


# Toggle lever valve KH/O-3-PK-3

Part number: 33003

FESTO



## Data sheet

 General operating condition

Feature	Value
Valve function	3/2-way, monostable, open/closed
Standard nominal flow rate	80 l/min
pneumatic working port	PK-3
Operating pressure	0 bar ... 8 bar
Design	Piston seat
Nominal size	2.5 mm
Type of piloting	Direct
Symbol	00991285
LABS (PWIS) conformity	VDMA24364-B1/B2-L
Ambient temperature	-10 °C ... 60 °C
Actuating force, normally closed	7.5 N
Actuating force, normally open	6.5 N
Product weight	20 g
Type of mounting	With through-hole
Pneumatic connection, port 1	PK-3
Pneumatic connection, port 2	PK-3
Pneumatic connection, port 3	PK-3
Material seals	NBR
Material housing	Polymer