



The Timken Company

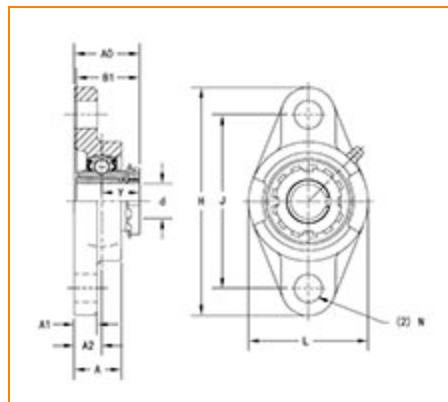
4500 Mt Pleasant St. NW

N. Canton, OH 44720

Phone: (234) 262-3000

E-Mail: CustomerCAD@timken.com • **Web site:** www.timken.com

Bearing Unit - Adapter Sleeve UKFL206 - HE2306, UKFL 200 Two-Bolt Flanged Mounted Bearings- Adapter Sleeve Locking



[Specifications](#) | [Dimensions](#) | [Basic Load Ratings](#)

Specifications

Bearing Unit - Adapter Sleeve	UK206 - HE2306
Shaft Size d	1.0000 in
Adapter Sleeve Number¹	HE2306
Locking Style	Adapter Sleeve Locking
Housing Construction	Two-Bolt Flange

Dimensions

Total Length H	148 mm 5.827 in
Total Height L	80 mm 3.15 in

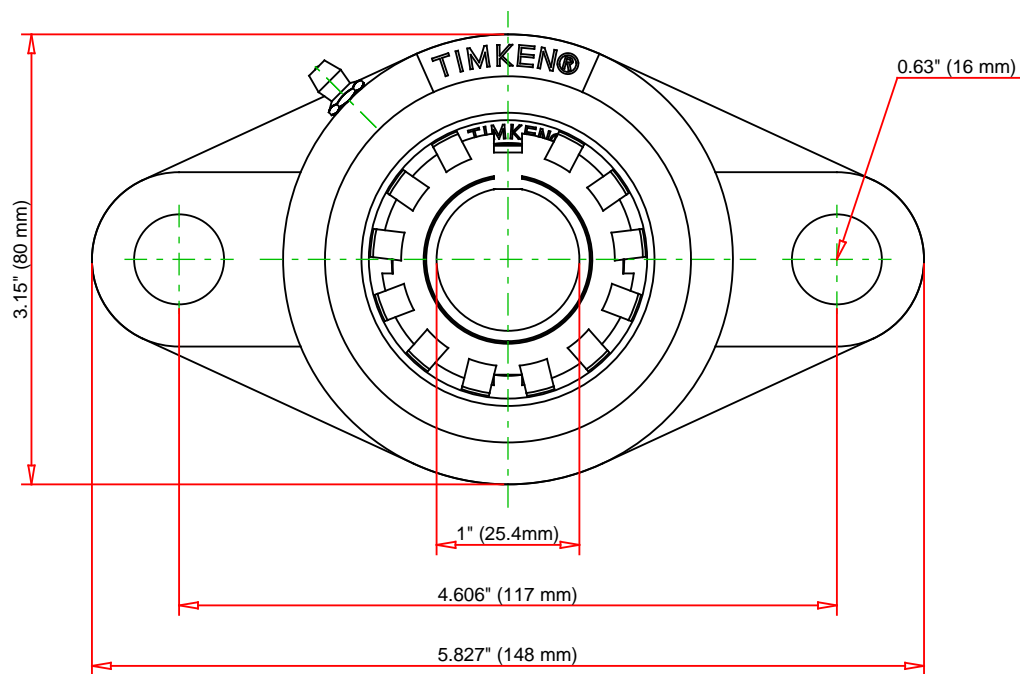
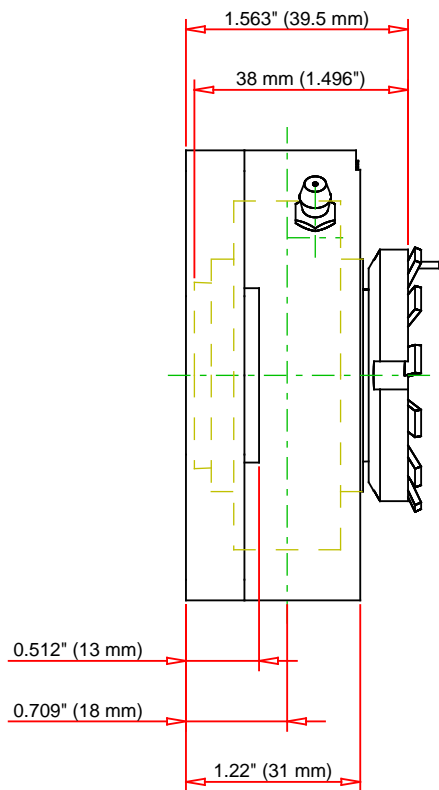


Housing Width A	31 mm 1.22 in
Bolt Hole Spacing J	117 mm 4.606 in
Bolt Hole Size N	16 mm 0.63 in
Flange Thickness A1	13 mm 0.512 in
Center of Bearing from Housing End A2	18 mm 0.709 in
Center of Bearing from Bearing End Y	21.5 mm 0.846 in
Dimension B1	38 mm 1.496 in
Dimension A0	39.5 mm 1.563 in
Bolt Size	M14


Basic Load Ratings

Static Load Rating	11300 N 2540 lbf
Dynamic Load Rating	19500 N 4384 lbf

¹ Purchase the Adapter Sleeve separately



Note: Adapter sold separately

	Bearing Number	UK206 - HE2306				UKFL206 - HE2306 UKFL 200 Two-Bolt Flanged Mounted Bearings- Adapter Sleeve Locking	
	Load Ratings - C _r	4384	lbf	19500			N
	Load Ratings - C _{0r}	2540	lbf	11300			N
	Weight	2.1	lb	1	kg		
							THE TIMKEN COMPANY NORTH CANTON, OHIO USA
Every reasonable effort has been made to ensure the accuracy of the information contained in this writing, but no liability is accepted for errors, omissions or for any other reason.						FOR DISCUSSION ONLY	