

Manifold Option

Interface regulator

How to order interface regulator

Series SV1000

SV1 **0** **00** - **05** - **P**

Applicable valve

0	For single, double
3	For 3 position

Regulating port

P	P port
A1	A port (P controlled type, A port regulation)
B1	B port (P controlled type, B port regulation)

Option

05	With pressure gauge [For odd number station]
06	With pressure gauge [For even number station]
M1	Without pressure gauge

Series SV2000/SV3000/SV4000

SV **2** **000** - **00** - **P**

Series

2	SV2000
3	SV3000
4	SV4000

Option

00	With pressure gauge
M1	Without pressure gauge

Regulating port

P	P port
A1	A port (P controlled type, A port regulation)
B1	B port (P controlled type, B port regulation)



Note) In the case of Series SV1000 with a pressure gauge when mounting on the manifold, use caution that the part numbers are different between the odd no. stations and the even no. stations to avoid pressure gauges from interfering from each others.

Note) Use caution that the part numbers will be differed depending on the one for single/double and 3 position due to the different length of solenoid valves. Also, when at least the one for 3 position is included in the same manifold, use all the ones for 3 position.

SV1000-05-□

(For mounting odd number stations)

SV1000-06-□

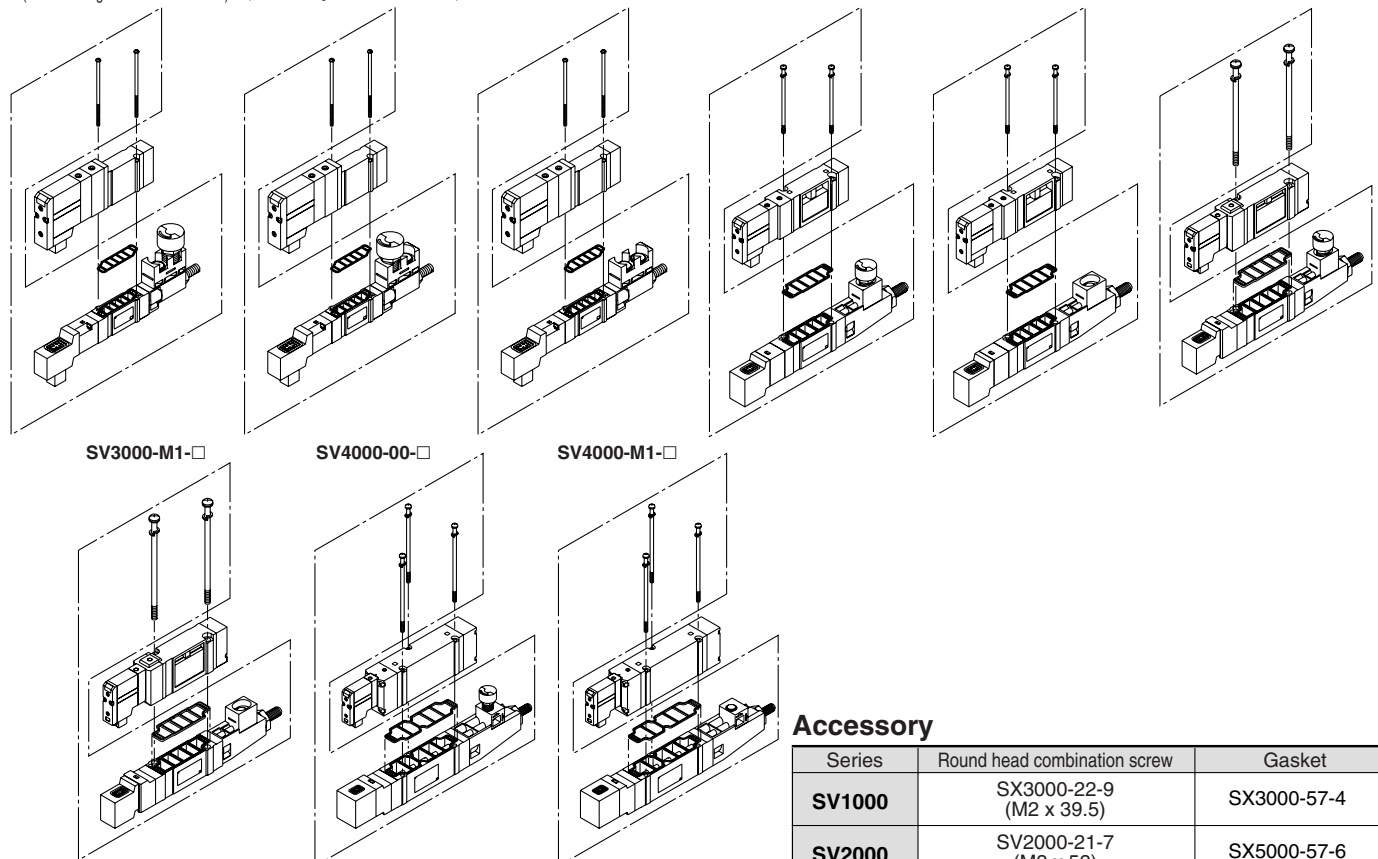
(For mounting even number stations)

SV1000-M1-□

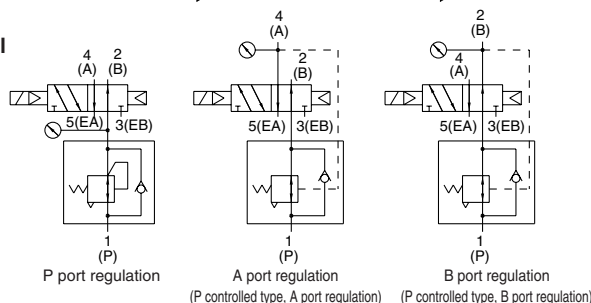
SV2000-00-□

SV2000-M1-□

SV3000-00-□



JIS Symbol



Accessory

Series	Round head combination screw	Gasket
SV1000	SX3000-22-9 (M2 x 39.5)	SX3000-57-4
SV2000	SV2000-21-7 (M3 x 53)	SX5000-57-6
SV3000	SV3000-21-4 (M4 x 57)	SX7000-57-5
SV4000	SV2000-21-8 (M3 x 69.5)	SY9000-11-2

Caution

Mounting Screw Tightening Torques

M2: 0.16 N·m
M3: 0.8 N·m
M4: 1.4 N·m