

Manifold Regulator Modular Type Series *ARM2500/3000*

- A modular type that can be freely mounted on a manifold station.
- Optimal for central pressure control.
- Easily set up using the new handle. Also has a One-touch lock system.



ARM3000



ARM2500

How to Order

ARM 2500 - 05 A - 02 G1

Regulator for manifold

Body size

2500
3000

Number of stations

02	2 stations
...	...
10	10 stations

Made to Order

Nil	None
X216	With backflow function

Accessory (Pressure gauge)

Nil	None (With plug)
G1	Back side thread: G33-10-□01
G2	Vertical side thread: GA33-10-□01

* Pressure gauges are shipped together (but not assembled).

Port size (OUT side)

Symbol	Port size	Applicable model
02	1/4	ARM2500
03	3/8	ARM3000

Thread type

Nil	Rc
N	NPT
F	G

Piping

Symbol	Type	IN
A	Common IN	From end plate
B	Individual IN	From OUT port or G port

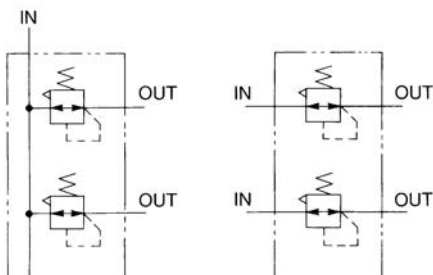
Standard Specifications

Proof pressure	1.5 MPa
Maximum operating pressure	1.0 MPa
Regulating pressure range	0.05 to 0.85 MPa
Ambient and fluid temperature	-5 to 60°C (No freezing)
Fluid	Air
Construction	Relieving type

JIS Symbol

Common IN

Individual IN



JIS Symbol

With backflow function

Port Size/Mass

Model	Piping	Port size			Pressure gauge port size	Mass (kg)	
		IN side		OUT side		Regulator	End plate
		Body	End plate				
ARM2500	Common IN	—	3⁄8	1⁄4	1⁄8	0.26	0.06
	Individual IN	1⁄4	—	1⁄4	1⁄8		
ARM3000	Common IN	—	1⁄2	3⁄8	1⁄8	0.47	0.11
	Individual IN	3⁄8	—	3⁄8	1⁄8		

Mass by the Number of Stations

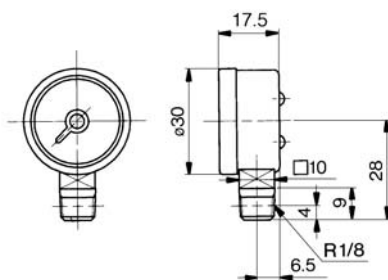
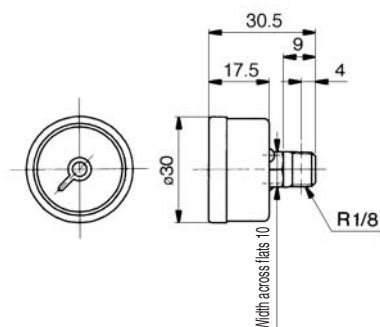
(kg)

Model \ Stations	2	3	4	5	6	7	8	9	10
ARM2500	0.68	0.96	1.23	1.51	1.78	2.06	2.33	2.61	2.89
ARM3000	1.25	1.75	2.25	2.75	3.26	3.76	4.26	4.76	5.26

Option: Pressure Gauge (Max. pressure indication: 1.0 MPa)

G33-10-□01

GA33-10-□01



Note 1) □ in the gauge part no. (e.g. G33-10-□01) indicates the type of threads used for connection. For Rc, leave the symbol blank, and for NPT, enter "N".
Please consult with SMC for the supply of a pressure gauge with NPT port threads.

Note 2) Use caution not to tighten excessively when mounting a pressure gauge, otherwise it may result in a breakdown. For sealing, use a pipe tape. Torque recommended: (R 1/8: 7 to 9 N·m).

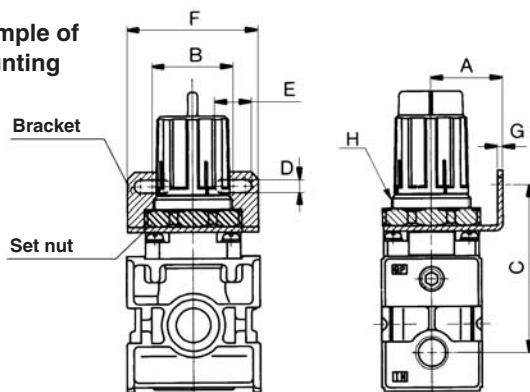
Option/Mounting Bolt Assembly

Model	Part no.	Dimensions	Qty.	Note
ARM2500	136313	Hexagon socket head cap screw (M5 x 70)	4	With flat washer
ARM3000	136413	Hexagon socket head cap screw (M6 x 85)	4	With flat washer

Option/Bracket Assembly

Individual IN type can be used as a single unit regulator.

Example of mounting



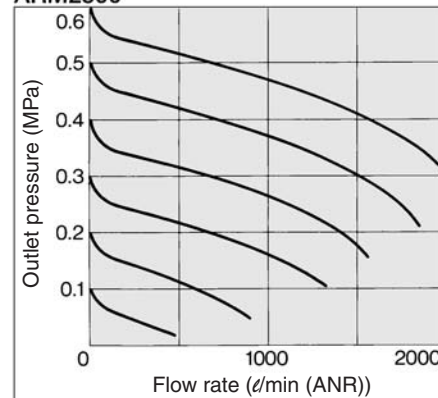
Model	Part no.	Composition of assembly	A	B	C	D	E	F	G	H
ARM2500	136314	Set nut (1349172)	30	34	70	5.4	15.4	55	2.3	M33 x 1.5
		Bracket (B220)								
ARM3000	136414	Set nut (131532)	41	40	75.5	6.5	8	53	2.3	M42 x 1.5
		Bracket (B320)								

Note) Tighten the set nut securely and fix it.
Recommended torque for set nut
ARM2500: 17.5 ± 3.5 N·m
ARM3000: 22.5 ± 4.5 N·m

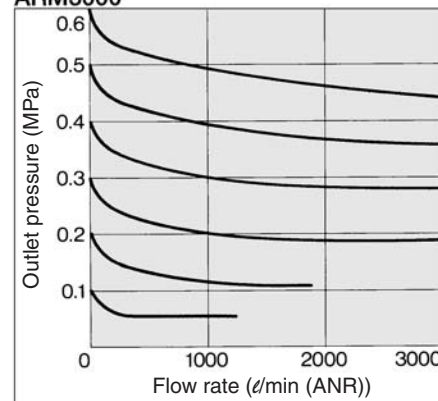
Flow Characteristics (Representative Value)

Inlet pressure: = 0.7 MPa

ARM2500



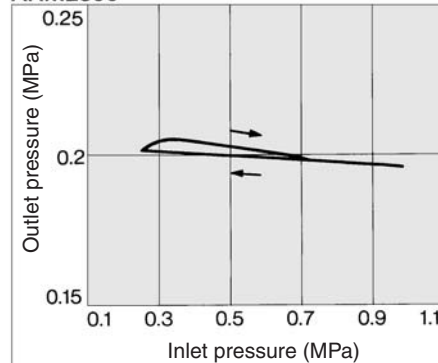
ARM3000



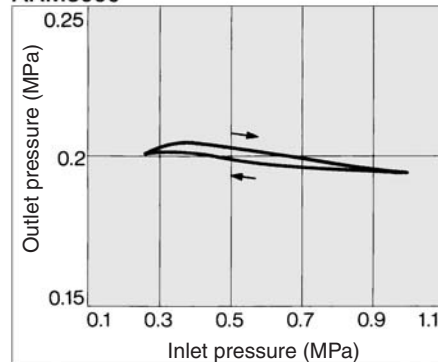
Pressure Characteristics (Representative Value)

Initial setting
P1 = 0.7 MPa P2 = 0.2 MPa
Q = 20 l/min (ANR)

ARM2500



ARM3000



ARJ

AR425
to 935

AMR

ARM

ARP

IR

IRV

VEX1□

SRH

SRP

SRF

ARX20

VCHR

ITV

IC

PVQ

VEF
VEP

VER

VEA

VY2

VBA
VBAT

AP100