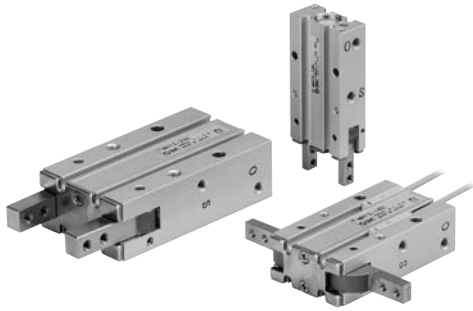


## Specifications



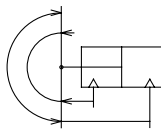
Fluid	Air
Operating pressure	0.1 to 0.6 MPa
Ambient and fluid temperature	-10 to 60°C
Repeatability	±0.2 mm
Max. operating frequency	60 c.p.m.
Lubrication	Not required
Action	Double acting
Auto switch (Option) <sup>Note)</sup>	Solid state auto switch (3-wire, 2-wire)



Note) Refer to pages 761 to 809 for further information on auto switches.

### JIS Symbol

Double acting



## Model

Model	Bore size (mm)	Effective gripping force <sup>(1)</sup> (N·m)	Opening/Closing angle (Both sides)		Mass <sup>(2)</sup> (g)
			Opening side	Closing side	
MHY2-10D	10	0.16	180°	-3°	70
MHY2-16D	16	0.54			150
MHY2-20D	20	1.10			320
MHY2-25D	25	2.28			560



Note 1) At the pressure of 0.5 MPa

Note 2) Except auto switch



- Refer to "How to Select the Applicable Model" on page 658.
- Refer to pages 658 and 659 for the details on effective holding force and allowable overhanging distance.



### Made to Order

(Refer to pages 683 to 713 for details.)

Symbol	Specifications/Description
-X4	Heat resistance (100°C)
-X5	Fluororubber seal
-X50	Without magnet
-X53	EPDM for seals, Fluorine grease
-X63	Fluorine grease
-X79	Grease for food

MHZ

MHF

MHL

MHR

MHK

MHS

MHC

MHT

**MHY**

MHW

-X□

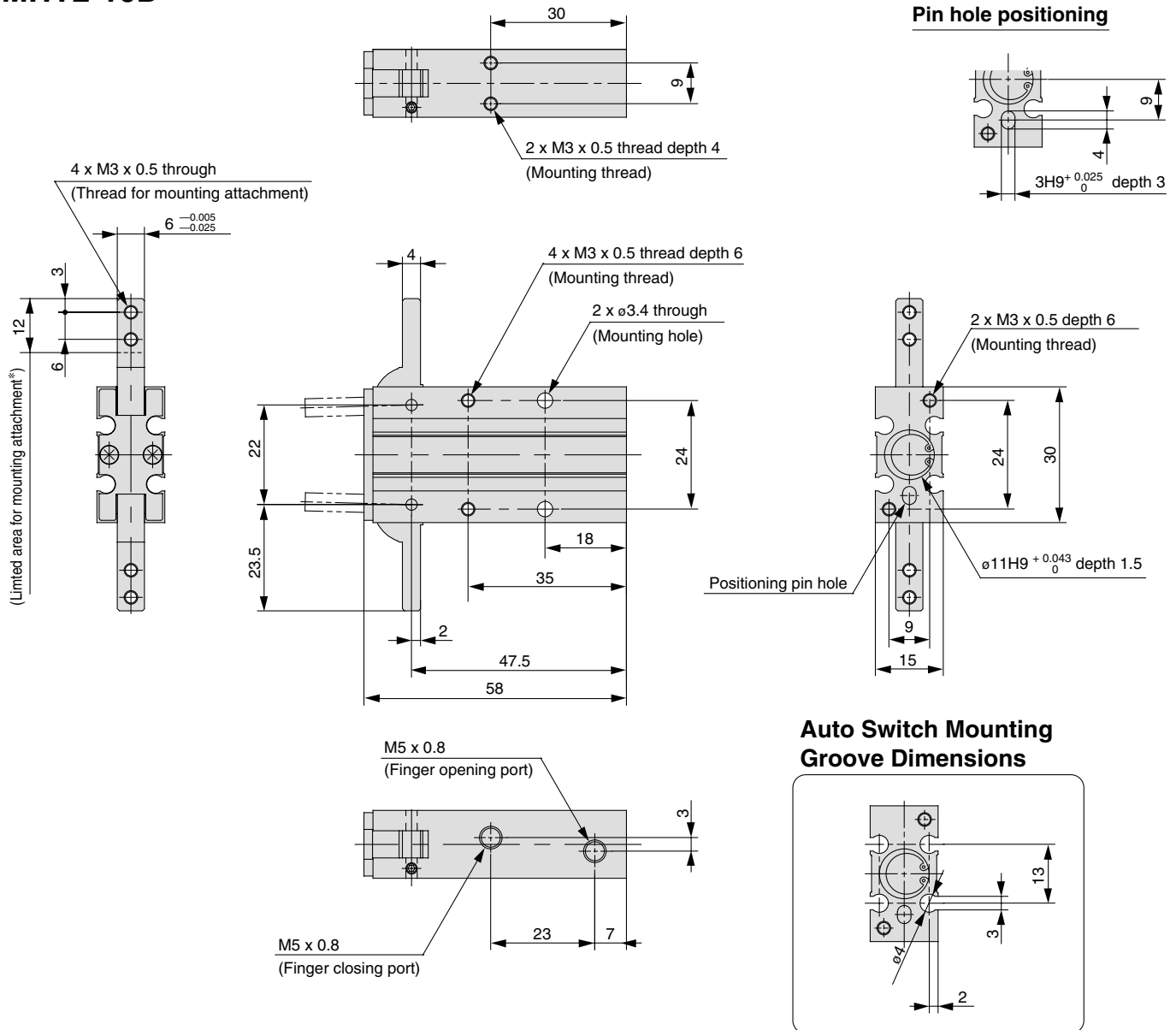
MRHQ

MA

D-□

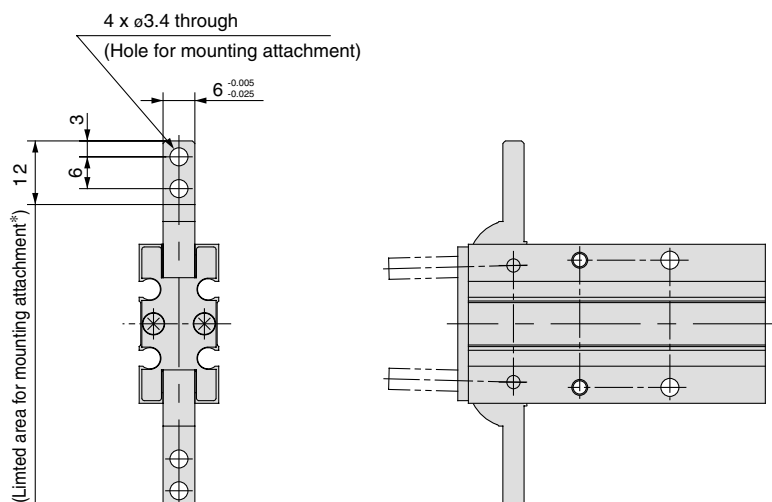
## Dimensions

### MHY2-10D



### MHY2-10D2

Opening/Closing direction  
through-hole type



\* Do not extend the attachment from limited area for mounting to avoid interference with the attachment or main body.

MHZ

MHF

MHL

MHR

MHK

MHS

MHC

MHT

**MHY**

MHW

-X□

MRHQ

MA

D-□