

# Soft Start-up Valve AV□2000-A/3000-A/4000-A/5000-A Series

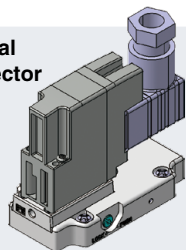
## Electrical Entry Variations

AV Series

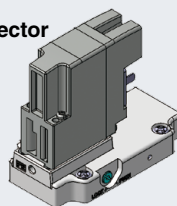
p. 4



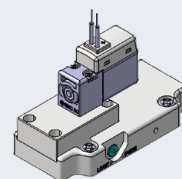
DIN terminal  
with connector  
Type D  
Type Y\*1



DIN terminal  
without connector  
Type D  
Type Y\*1



Grommet

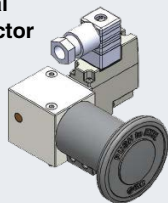


AVL Series

p. 6



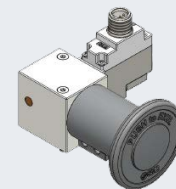
DIN terminal  
with connector  
Type D  
Type Y\*1



DIN terminal  
without connector  
Type D  
Type Y\*1

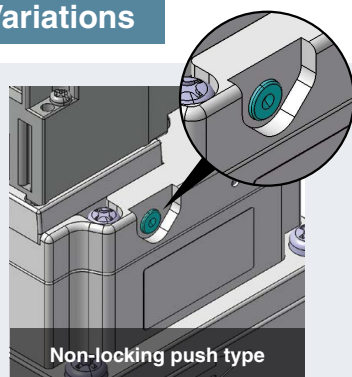


M12 connector

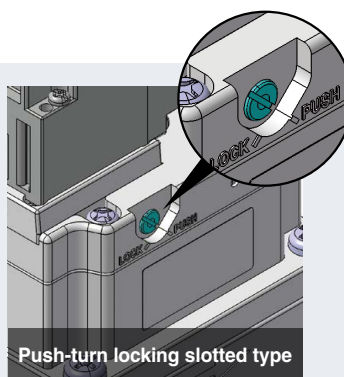


\*1 A DIN terminal in compliance with EN-175301-803C (former DIN43650C)

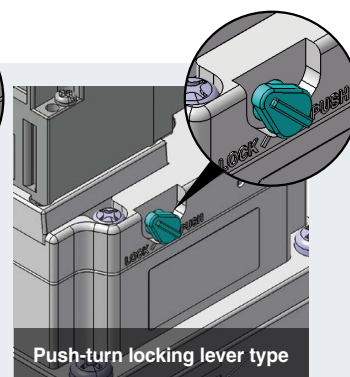
## Manual Override Variations



Non-locking push type



Push-turn locking slotted type



Push-turn locking lever type

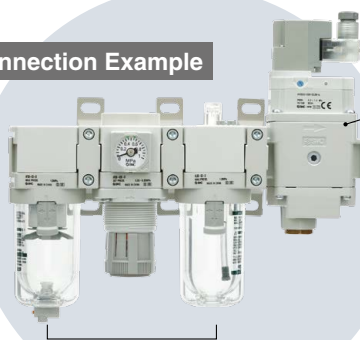
\* The AV type only

## Combination with F.R.L. Units

Series	Port size	F.R.L. units				
		AC20	AC30	AC40*1	AC50	AC60
AV□2000-A	1/4	●				
AV□3000-A	3/8		●			
AV□4000-A	1/2			●		
AV□5000-A	3/4				●	
	1				●	●

\*1 Excludes port size 06

### Connection Example



F.R.L. Units  
AC30-□-D (Sold separately)

Soft Start-up  
Valve  
AV3000-A

### Application Example

For slow air supply during start-up  
and for rapid air exhaust after  
stopping the equipment



### Simple Specials System

This product can be integrated into an F.R.L. unit through the simple special ordering system. The lead time is almost the same as that of the standard product.

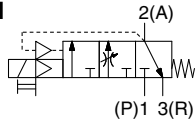
Please contact your local sales representative for more details.

# Soft Start-up Valve

## AV2000-A/3000-A/4000-A/5000-A Series

RoHS

### Symbol



### How to Order



\* CE/UKCA compliant: ● UL certification: ○

	Electrical entry		
	Grommet	DIN terminal	M12 connector
AC	—	●	—
DC	●○	●○	●○

AV **20** **00** - **02** **B** - **1** **D** **B** - **—** - A

① ② ③ ④ ⑤ ⑥ ⑦ ⑧ ⑨

		Symbol	Description	① Body size			
				20	30	40	50
②	Thread type	Nil	Rc	●	●	●	●
		N	NPT	●	●	●	●
		F	G	●	●	●	●
③	Port size 1(P), 2(A)	02	1/4	●	—	—	—
		03	3/8	—	●	—	—
		04	1/2	—	—	●	—
		06	3/4	—	—	—	●
		10	1	—	—	—	●
④	a Mounting	Nil	Without mounting option	●	●	●	●
		B	With bracket	●	●	●	●
	b Pressure gauge	Nil	Without pressure gauge	●	●	●	●
		G	Round type pressure gauge (with limit indicator)	●	●	●	●
	c Silencer	Nil	Without silencer	●	●	●	●
		S	Silencer (Built-in)	●	●	●	●
⑤	Rated coil voltage (50/60 Hz)	1	100 VAC	●	●	●	●
		2	200 VAC	●	●	●	●
		3	110 VAC [115 VAC]*1	●	●	●	●
		4	220 VAC [230 VAC]*1	●	●	●	●
		5	24 VDC	●	●	●	●
		6	12 VDC	●	●	●	●
⑥	Electrical entry	G	Grommet (Lead wire length: 300 mm)	●	●	●	●
		D	Type D (DIN terminal/With connector)	●	●	●	●
		Y	Type Y (DIN terminal/With connector)*2	●	●	●	●
		DO	Type D (DIN terminal/Without connector)	●	●	●	●
		YO	Type Y (DIN terminal/Without connector)	●	●	●	●
		KO	M12 connector (Without cable)	○*3	○*3	○*3	○*3
⑦	Light/surge voltage suppressor	Nil	None	●	●	●	●
		Z	With light/surge voltage suppressor	○*4	○*4	○*4	○*4
⑧	Manual override	Nil	Non-locking push type	●	●	●	●
		B	Push-turn locking slotted type	●	●	●	●
		C	Push-turn locking lever type	●	●	●	●
⑨	d Flow direction	Nil	Flow direction: Left to right	●	●	●	●
		R	Flow direction: Right to left	●	●	●	●
	e Pressure unit	Nil	Unit on product label: MPa, Pressure gauge: MPa	●	●	●	●
		Z*5	Unit on product label: psi, Pressure gauge: MPa/psi dual scale	○*6	○*6	○*6	○*6

\*1 The 110 VAC and the 115 VAC are interchangeable. The 220 VAC and the 230 VAC are interchangeable as well. The allowable voltage fluctuation is -15% to +5% of the rated voltage for the 115 VAC or the 230 VAC.

\*2 Type "Y" is a DIN terminal in compliance with EN-175301-803C (former DIN43650C).

\*3 When the electrical entry is "KO," only the DC specifications (5 or 6) can be selected for the rated coil voltage.

\*4 When the electrical entry is "DO" or "YO," the light/surge voltage suppressor cannot be selected. When it is "KO," only the "With light/surge voltage suppressor" option can be selected.

\*5 For the pipe thread type: NPT

This product is for overseas use only according to the New Measurement Act. (The SI unit type is provided for use in Japan.)

\*6 Pressure unit Z: For the pipe thread type: NPT only

• Select one each for options "a" to "c" and semi-standard options "d" and "e."  
• Option/Semi-standard symbol: When more than one specification is required, indicate in alphabetical order.  
**Example) AV2000-02BGS-1DB-A**