

40021096. - cubio cupboard

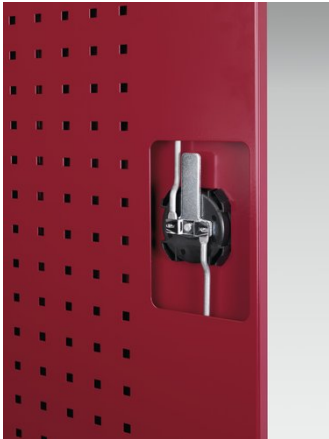
Short Description

cubio cupboard with perfo doors & 3 shelves

WxDxH: 1050x650x1200mm

Product Images





Additional Information

Description	cubio shelf cupboard. Featuring a heavy duty, reinforced steel housing with up to 1 tonne total capacity with double, perfo panel lined, reinforced high doors with 3 adjustable height, galvanised steel shelves (100kg U.D.L.). Finished in durable powder coat paint. WxDxH: 1050x650x1200mm.
Width	1050
Depth	650
Height	1200
Customs tariff number	94032080
Product material	Sheet steel
Product surface	Powder coated
Door type	Perfo
Door height 1	1025 mm
Number of shelves	3
Shelf Material	Steel
Shelf Load Capacity	100kg

Product Options

Colour:	Anthracite grey
	Crimson red
	Gentian blue
	Light grey