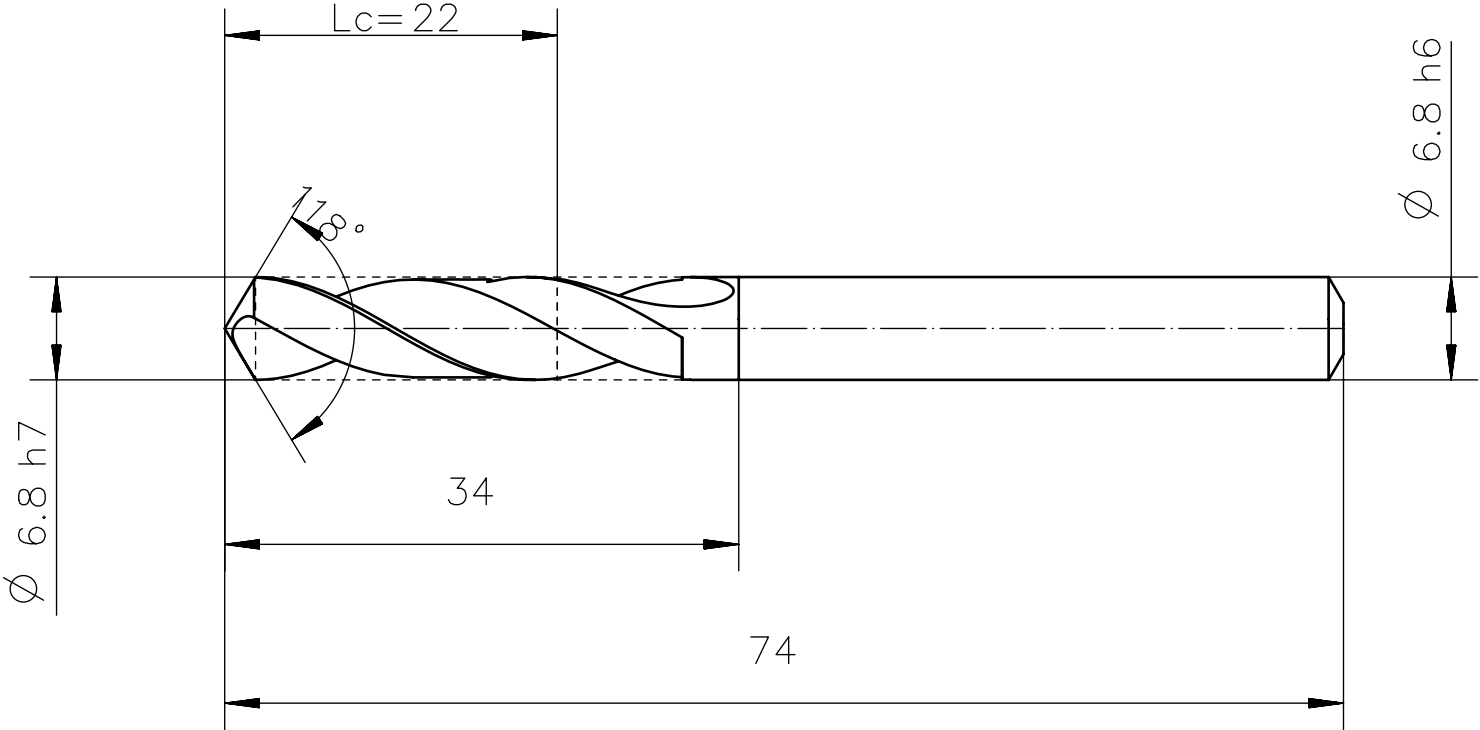


Characteristics:	
No. of flutes	2
Direction of cut	right
Standard	DIN 6539
Shank	cylindrical
Type of tool	N



Form V+A



Qty.	Description				Det.	Dwg. No.		Material			
<b>Proprietary Information DIN ISO 16016:2002–5</b>  We reserve all Rights to this drawing including for the purpose of issueing patents and registration of petty patents. Without our written consent this drawing may not be copied, whole or partially, and may not be misused by the recipient as well as third parties. Any infraction will result in compensation for occured damages and could lead to legal action by the author.							Scale: <b>2:1</b>		Format: <b>A3</b>		
							Material: <b>K30F</b>  Surface: <b>uncoated</b>				
											Date
				Drawn	28.03.11 Titex						
				Checked							
							Drawing–No.:		<b>1A1163–5057597</b> <b>D10</b>		
Rev.	Revision		Date	Name	Cust. No.:			Ord.–Code: <b>A1163–6.8</b>			