



The Timken Company

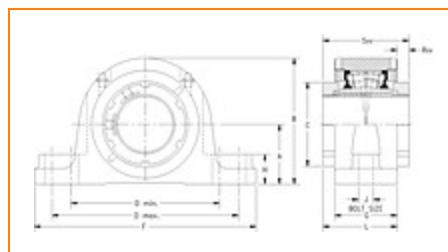
4500 Mt Pleasant St. NW

N. Canton, OH 44720

Phone: (234) 262-3000

E-Mail: CustomerCAD@timken.com • **Web site:** www.timken.com

Part Number QVVSN26V110S, Double V-Lock Two-Bolt Pillow Block



[Specifications](#) | [Dimensions](#) | [Radial and Thrust Factors](#) | [Engineering Seal Speed](#) | [Engineering Bearing Attributes](#) | [Engineering Internal Radial Clearance](#)

Specifications

Engineering Group	Mounted Bearing
Bearing Number	22226
Shaft Size	110 mm
Shaft Size Type	Metric
Full Timken Part Number	QVVSN26V110SB QVVSN26V110SC QVVSN26V110SEB QVVSN26V110SEC QVVSN26V110SEM QVVSN26V110SEN QVVSN26V110SEO QVVSN26V110SET QVVSN26V110SM QVVSN26V110SN QVVSN26V110SO QVVSN26V110ST



Locking Style	Double V-Lock
Housing Construction	Two-Bolt Pillow Block
UPC Code	0883450081443 0883450081511 0883450286947 0883450287029 0883450288460 0883450288545 0883450289986 0883450290067 0883450291507 0883450291583 0883450293020 0883450293105

Dimensions

Dimension A	5.51 in 140 mm
Dimension B	10.63 in 270 mm
Dimension C	6.89 in 175 mm
Dimension D Min	13.07 in 332 mm
Dimension D Max	14.37 in 365 mm
Dimension F	16.14 in 410 mm
Dimension G	4.45 in 113 mm
Dimension H	1.53 in 39 mm

Dimension J (Bolt Size)	0.875 in 24 mm
Dimension L	5.75 in 146 mm
Dimension RVV	1.3 in 33 mm
Dimension SVV	7.01 in 178 mm

Radial and Thrust Factors

C0 - Static Load	212000 lbf 945000 N
C - Dynamic Load (Basic)	170000 lbf 757000 N
e - Geometry Factor	0.26
Y1 - Geometry Factor	2.62
Y2 - Geometry Factor	3.9

Engineering Seal Speed

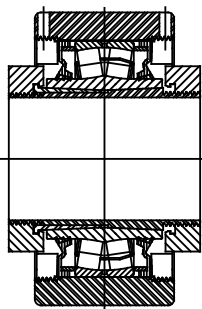
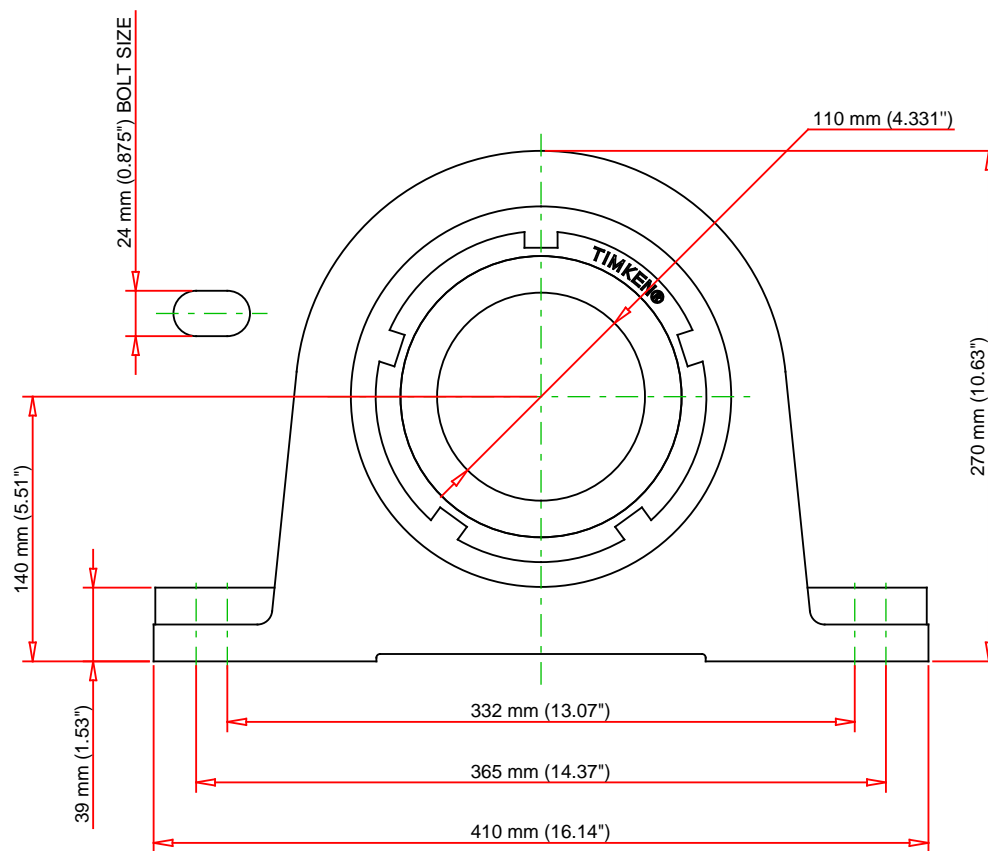
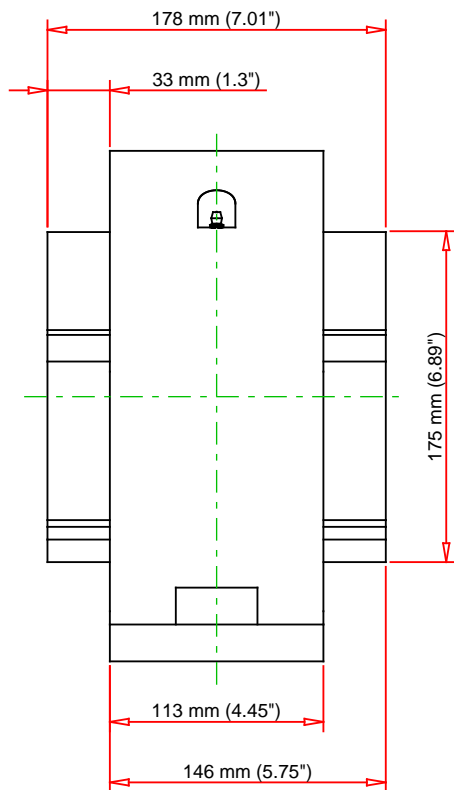
Oil Lubrication - M/N Seal	700 rpm
Oil Lubrication - T Seal	1500 rpm
Oil Lubrication - B/C/O Seal	400 rpm
Grease Lubrication - M/N Seal	700 rpm
Grease Lubrication - T Seal	1000 rpm
Grease Lubrication - B/C/O Seal	400 rpm

Engineering Bearing Attributes

Float	0.083 in 2.108 mm
Shaft Tolerance	0.0050 in 0.127 mm

Engineering Internal Radial Clearance

Eng Internal Radial Clearance - Min	0.0053
Eng Internal Radial Clearance - Max	0.0067
Pre Install Clearance Min	0.0053 in 0.135 mm
Pre Install Clearance Max	0.0067 in 0.170 mm



Note: Section View not to Scale

C - Dynamic Load	170000	lbf	757000	N
C0 - Static Load	212000	lbf	945000	N
Weight	88	lb	39.9	kg
Max. Speed T-Seals & Grease	1000	rpm		
Rad. Clearance - Max.	0.0067			

TIMKEN

THE TIMKEN COMPANY
NORTH CANTON, OHIO USA

QVVS26V110S
Double V-Lock Two-Bolt Pillow Block

Every reasonable effort has been made to ensure the accuracy of the information contained in this writing, but no liability is accepted for errors, omissions or for any other reason.

FOR DISCUSSION ONLY