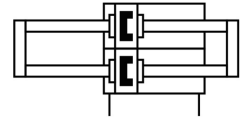
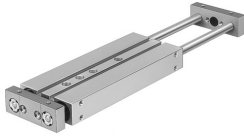



# Twin cylinder DPZJ-25-50-P-A-KF-S2

Part number: 162120

FESTO



 General operating condition

## Data sheet

Feature	Value
Stroke	50 mm
Adjustable end-position range/length	10 mm
Piston diameter	25 mm
Operating mode, drive unit	Yoke
Cushioning	Elastic cushioning rings/plates at both ends
Mounting position	optional
Guide	Recirculating ball bearing guide
Design	Guidance
Position detection	Via proximity switch
Symbol	00991243
Variants	Through piston rod
Operating pressure	0.1 MPa ... 1 MPa
Operating pressure	1 bar ... 10 bar
Max. speed	1 m/s
Mode of operation	Double-acting
Operating medium	Compressed air to ISO 8573-1:2010 [7:4:4]
Note on operating and pilot medium	Lubricated operation possible (in which case lubricated operation will always be required)
Corrosion resistance class CRC	0 - No corrosion stress
LABS (PWIS) conformity	VDMA24364-B1/B2-L
Ambient temperature	-20 °C ... 80 °C
Impact energy in end positions	0.3 J
Theoretical force at 0.6 MPa (6 bar, 87 psi), return stroke	452 N
Theoretical force at 0.6 MPa (6 bar, 87 psi), advance stroke	452 N
alternative connections	See product drawing
Pneumatic connection	M5
Material cover	Wrought aluminium alloy
Material seals	NBR
Material housing	Wrought aluminium alloy
Material piston rod	Case-hardened steel