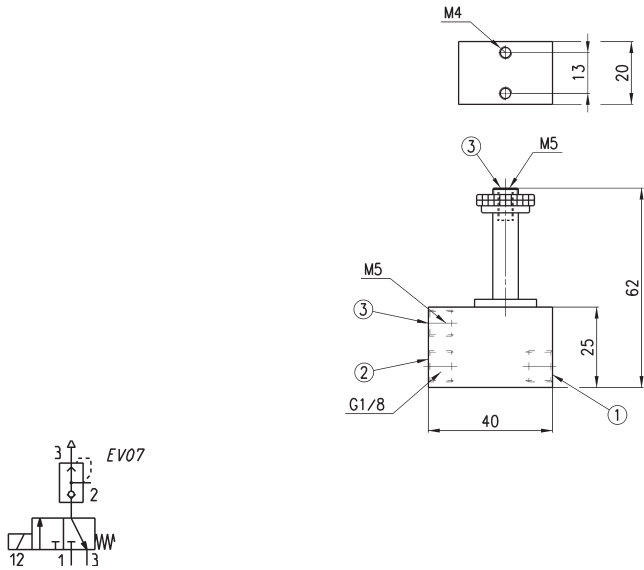


3/2-way solenoid valve Mod. A43



* choose the most suitable solenoid.

The 3/2-way NC solenoid valve, with G1/8 ports, incorporates a rapid exhaust valve. It is particularly suitable for operating small single-acting cylinders.



Mod.	Ports	Function	Orifice Ø mm	Qn (NL/min)
A431-1C2-*	G1/8 / M5	3/2 NC	1.5	50

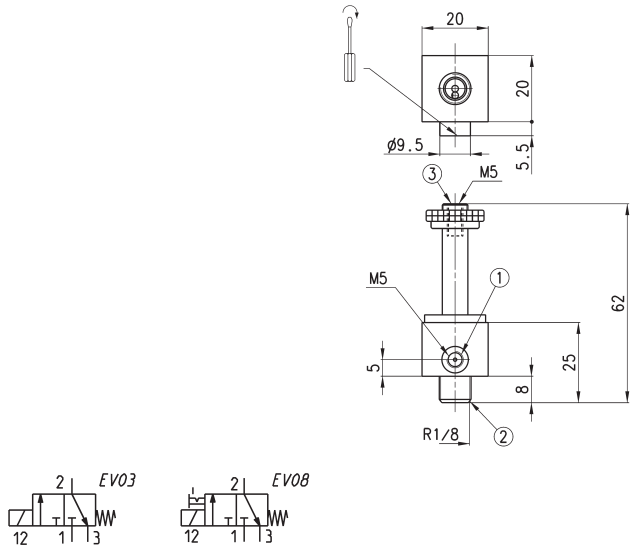
3/2-way solenoid valve Mod. A33



The body has an outlet with a R1/8 male thread which can be screwed directly onto the component to be operated. The inlet port is M5 threaded.

* choose the most suitable solenoid.

They are particularly suitable for the actuation of small single-acting cylinders and the operation of pneumatic valves with very low operating pressures.



Mod.	Inlet / outlet	Function	Orifice Ø (mm)	Man. override bistable	Qn (NL/min)	Symbol
A331-3C2-*	M5 / R1/8	3/2 NC	1,5	no	55	EV03
A331-4C2-*	M5 / R1/8	3/2 NC	1,5	yes	55	EV08