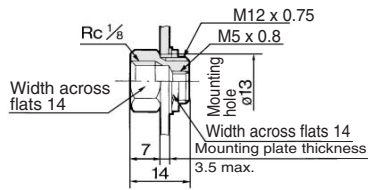


Series M5

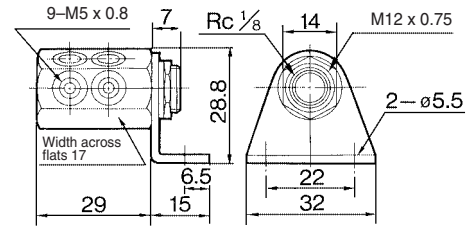
Bulkhead Reducer: M-5ER



For the plate thickness 3.5 to 6 mm, give the plate tapping M12 x 0.75, and then screw-in.

Weight: 12 g

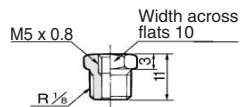
Manifold: M-5M



Panel mounting plate thickness max. 3.5 mm
For the plate thickness 3.5 to 6 mm, give the plate tapping M12 x 0.75, and then screw-in.

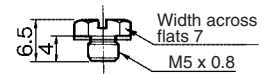
Weight: 59 g

Bushing: M-5B



Weight: 5.8 g

Plug: M-5P



Weight: 1.3 g

Gasket: M-5G1



Weight: 0.01 g

Gasket: M-5GH



Weight: 0.04 g

⚠ Precautions

Refer to pages 15-18-3 to 15-18-4 in the front matter for Safety Instructions and Common Precautions on the products mentioned in this catalog, and refer to pages 15-1-10 to 15-1-11 for Precautions on every series.

Tightening of M3/M5 Threads

⚠ Caution

1. Tighten by hand, and give it an additional 1/4 rotation with wrench. (The additional rotation should be doubled to 1/2 when using the universal elbow, universal tee, etc. which have two gaskets.) If tightened excessively, thread portion may be damaged and gasket may be deformed. This will cause air leakage. On the contrary, if tightened insufficiently, thread may loosen causing air leakage.

Use of Tube with Hose Nipple

⚠ Caution

1. Cut the tube perpendicularly to the tube axis to a little longer than required length. (Use tube cutter "TK-1", "TK-2" or "TK-3".)
2. Pass the tube through the cap nut.
3. Push the tube until it comes to the end of the barb portion, or it may cause air leakage or hose releasing.
4. Tighten the cap nut firmly by hand on the fitting.

Use of Tube with Barb Fitting

⚠ Caution

1. Cut the tube perpendicularly to the tube axis to a little longer than required length. (Use tube cutter "TK-1", "TK-2" or "TK-3".)
2. Push the tube until it comes to the end of the barb portion, or it may cause air leakage or release hose.