

# Compact Manifold Regulator

# Common Supply Type

## Series ARM11A

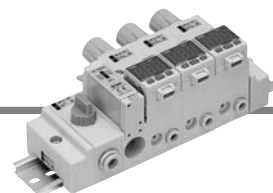


**Made to Order**  
(Refer to page 524 for details.)

### How to Order

ARM11A **A** **1** - **3** **07** - **M** **Z** - **N**

① ② ③ ④ ⑤ ⑥ ⑦ ⑧



#### 1. Handle Position

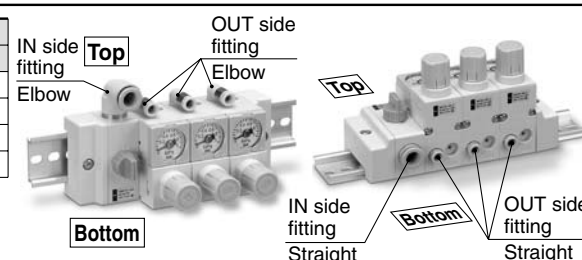
Symbol	Position
<b>A</b>	Top
<b>B</b>	Front
<b>C</b>	Bottom

**Top** **Front** **Bottom**



#### 2. IN/OUT Piping Position

Position	IN side		OUT side	
Symbol	Bottom	Top	Bottom	Top
1	●		●	
2		●		●
3	●			●
4		●	●	



#### 3. Regulator Block Stations

Symbol	Stations
<b>1</b>	1 station
<b>2</b>	2 stations
<b>3</b>	3 stations
<b>4</b>	4 stations
<b>5</b>	5 stations
<b>6</b>	6 stations
<b>7</b>	7 stations
<b>8</b>	8 stations
<b>9</b>	9 stations
<b>M</b>	10 stations

#### 4. IN/OUT Fitting Type (Refer to the figure below.)

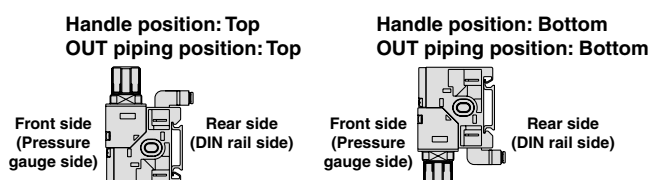
##### Metric size

Mounting position	IN side						OUT side			
Fitting type	Straight			Elbow			Straight		Elbow (Note)	
Symbol	ø6	ø8	ø10	ø6	ø8	ø10	ø4	ø6	ø4	ø6
<b>07</b>	●						●			
<b>08</b>	●							●		
<b>09</b>		●					●			
<b>10</b>		●						●		
<b>11</b>			●				●			
<b>12</b>			●					●		
<b>19</b>				●					●	
<b>20</b>				●						●
<b>21</b>					●				●	
<b>22</b>					●					●
<b>23</b>						●			●	
<b>24</b>						●				●
<b>26</b>	●								●	
<b>27</b>	●									●
<b>28</b>		●							●	
<b>29</b>		●								●
<b>30</b>			●						●	
<b>31</b>			●							●
<b>33</b>				●			●			
<b>34</b>				●				●		
<b>35</b>					●		●			
<b>36</b>					●			●		
<b>37</b>						●	●			
<b>38</b>						●		●		

##### Inch size

Mounting position	IN side						OUT side			
Fitting type	Straight			Elbow			Straight		Elbow (Note)	
Symbol	ø1/4	ø5/16	ø3/8	ø1/4	ø5/16	ø3/8	ø5/32	ø1/4	ø5/32	ø1/4
<b>57</b>	●						●			
<b>58</b>	●							●		
<b>59</b>		●					●			
<b>60</b>		●						●		
<b>61</b>			●				●			
<b>62</b>			●					●		
<b>69</b>				●					●	
<b>70</b>				●						●
<b>71</b>					●				●	
<b>72</b>					●					●
<b>73</b>						●			●	
<b>74</b>						●				●
<b>76</b>	●								●	
<b>77</b>	●									●
<b>78</b>		●							●	
<b>79</b>		●								●
<b>80</b>			●						●	
<b>81</b>			●							●
<b>83</b>				●			●			
<b>84</b>				●				●		
<b>85</b>					●		●			
<b>86</b>					●			●		
<b>87</b>						●	●			
<b>88</b>						●		●		

Note) When the handle and the OUT piping are located on the same side, the elbow fitting is directed to the rear side (DIN rail side). Use caution to ensure the connector is not disturbed, depending on piping direction, when choosing to attach a digital pressure switch.



## 5. Accessories

Symbol	Pressure display <sup>Note 1, 2)</sup>		Supply block type <sup>Note 3)</sup>				Supply block mounting position		
	Without pressure display	With pressure display	Common supply block	Common supply block with pressure switch	3-way valve common supply block	3-way valve common supply block + Pressure switch block	L side (Left)	R side (Right)	B side (Both)
Nil	●		●				●		
A	●			●			●		
B	●				●		●		
C	●					●	●		
D	●		●					●	
E	●			●				●	
F	●				●			●	
G	●					●		●	
H	●		●						●
J		●	●				●		
K		●		●			●		
L		●			●		●		
M		●				●			
N		●	●					●	
O		●		●				●	
P		●			●			●	
Q		●				●		●	
R		●	●						●

Note 1) Pressure display means a pressure gauge or digital pressure switch is attached.

When choosing to attach a digital pressure switch is chosen for attachment, be sure to enter the symbol, referring to table 8, "Digital Pressure Switch Output Specifications". Otherwise, a pressure gauge will come with the regulator.

Note 2) Pressure gauges are not compatible with copper-free and fluorine-free specifications.

Note 3) Pressure switches are not available with the oil-free specification.

## 6. Options

Symbol	None	0.35 MPa setting <sup>Note 1)</sup>	Non-relieving	Oil-free <sup>Note 2)</sup>
Nil	●			
1		●		
2			●	
3				●
4		●	●	
5		●		●
6			●	●
7		●	●	●

Note 1) A pressure gauge with a full span of 0.4 MPa is attached.

Note 2) The oil-free specification is grease-free in the fluid contact area.

## 7. Unit Representation

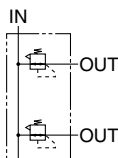
Symbol	Description
Nil	Display unit for product name plate and pressure gauge: MPa
Z <sup>Note 1, 2)</sup>	Display unit for product name plate and pressure gauge: psi
ZA <sup>Note 1, 3)</sup>	Digital pressure switch: with unit switching (MPa is initially set.)

Note 1) This option is available for use outside Japan only. (The SI unit has to be used in Japan.) Additionally, the pressure switch offers dual unit presentation in MPa and psi.

Note 2) The digital pressure switch is equipped with unit switching and initially set to psi.

Note 3) This option is available with the digital pressure switch.

### JIS Symbol

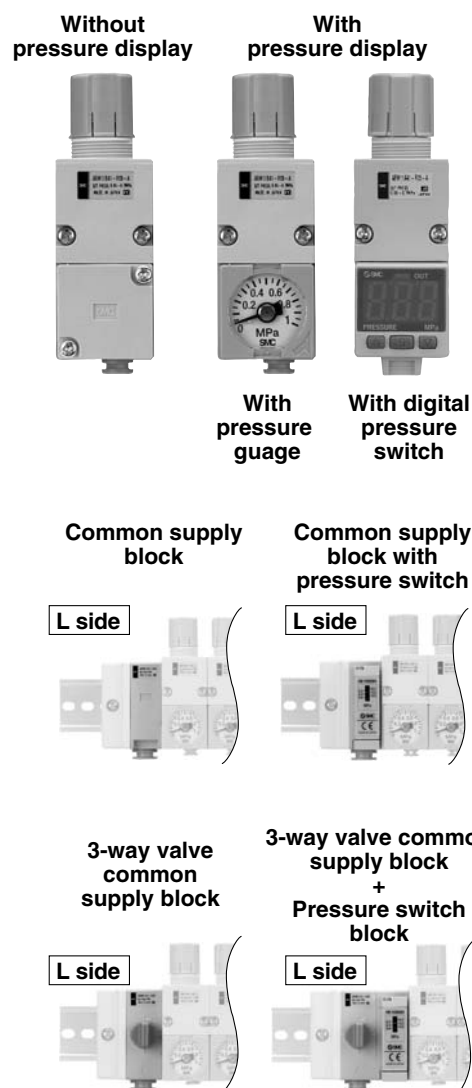


Note) A standard model is equipped with a backflow function. Main valve opens when the inlet pressure is released, and then the outlet pressure backflows into the inlet side.

## 8. Digital Pressure Switch Output Specifications <sup>Note)</sup>

Symbol	Details
Nil	None
N	NPN open collector
P	PNP open collector

Note) When a digital pressure switch is attached, the "pressure display" in table 5 "Accessories" will be equipped. The electrical entry is positioned on the side opposite the handle.



## Specifications

### Manifold (Regulator block, Common supply block, 3-way valve common supply block)

Regulator construction		Direct acting
Working principal		Diaphragm regulator
Relief mechanism	Standard	Relief type
	Optional	Non-relieving type
Backflow function <sup>Note 1)</sup>		Within (Unbalance type)
IN side tubing O.D.		ø6, ø8, ø10, ø1/4, ø5/16, ø3/8
OUT side tubing O.D.		ø4, ø6, ø5/32, ø1/4
Proof pressure		1.5 MPa
Maximum operating pressure		1.0 MPa
Set pressure range	Standard	0.05 to 0.7 MPa
	Optional	0.05 to 0.35 MPa (Low pressure type)
Fluid		Air
Ambient and operating fluid temperature <sup>Note 2)</sup>		5 to 60°C

Note 1) 0.1 MPa or greater set pressure is required when used in the reverse flow.

Note 2) 5 to 50°C when the digital pressure switch will be used.

Refer to pages 512 and 514 for the digital pressure switch and pressure switch specifications.