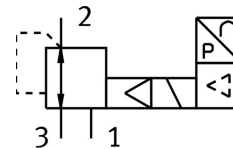


# Proportional-pressure regulator VPPX-12L-L-1-G12-0L10H-S1

Part number: 2448444

FESTO



 General operating condition

## Data sheet

| Feature                            | Value  |
|------------------------------------|--|
| Nominal size, supply               | 12 mm  |
| Nominal size, exhaust              | 12 mm  |
| Type of actuation                  | Electric   |
| Sealing principle                  | Soft   |
| Mounting position                  | optional   |
| Design                             | Piloted diaphragm regulator  |
| Short circuit current rating       | For all electrical connections   |
| Safety instructions                | Safety position VPPX: if the power supply cable is interrupted, output pressure is maintained unregulated. |
| Symbol                             | 00995303   |
| Reverse polarity protection        | For all electrical connections   |
| Type of reset                      | Mechanical spring  |
| Type of piloting                   | Pilot actuated   |
| Valve function                     | 3-way proportional pressure regulator  |
| Display type                       | LED  |
| Pressure regulation range          | 0.1 bar ... 10 bar   |
| Inlet pressure 1                   | 0 bar ... 11 bar   |
| Max. pressure hysteresis           | 0.05 bar   |
| Standard nominal flow rate         | 7000 l/min   |
| Operational voltage range DC       | 21.6 V ... 26.4 V  |
| Max. current consumption           | 500 mA   |
| Duty cycle                         | 100%   |
| Max. electrical power consumption  | 12 W   |
| Residual ripple                    | 10 %   |
| Signal range analogue output       | 0 - 10 V<br>0 - 20 mA<br>4 - 20 mA   |
| Signal range analogue input        | 0 - 10 V<br>4 - 20 mA<br>0 - 20 mA   |
| Operating medium                   | Compressed air to ISO 8573-1:2010 [7:4:4]<br>Inert gases   |
| Note on operating and pilot medium | Lubricated operation not possible  |
| Approval                           | RCM trademark<br>c UL us listed (OL)   |
| KC mark                            | KC-EMV   |

| Feature                                    | Value   |
|--|---|
| CE mark (see declaration of conformity)    | To EU EMC Directive<br>In accordance with EU RoHS Directive |
| CE marking (see declaration of conformity) | To UK instructions for EMC<br>To UK RoHS instructions       |
| Certificate issuing authority              | UL E322346  |
| Corrosion resistance class CRC             | 2 - Moderate corrosion stress                               |
| LABS (PWIS) conformity                     | VDMA24364-B1/B2-L   |
| Media temperature                          | 10 °C ... 50 °C   |
| Degree of protection                       | IP65  |
| Ambient temperature                        | 0 °C ... 60 °C  |
| Product weight                             | 2050 g  |
| Temperature coefficient                    | 0.04 %/K  |
| Repetition accuracy FS                     | 0.5 %   |
| Repetition accuracy in ± %FS               | 0.5 %FS   |
| Electrical connection                      | 8-pin<br>M12<br>Plugs                                       |
| Type of mounting                           | Either:<br>With through-hole<br>With accessories            |
| Pneumatic connection, port 1               | G1/2  |
| Pneumatic connection, port 2               | G1/2  |
| Pneumatic connection, port 3               | G1/2  |
| Note on materials                          | RoHS-compliant  |
| Material housing                           | Wrought aluminium alloy<br>Anodised                         |