

Key features

At a glance

When the supply port is pressurised, an internal piston is moved. The mechanism transfers the movement of the piston to the bellows, causing them to expand outwards.

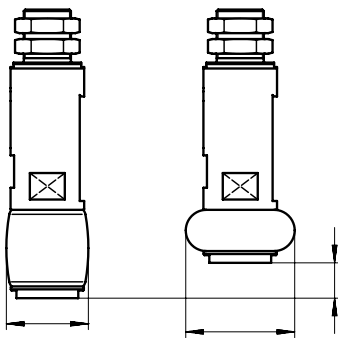
The increase in the bellows diameter enables the bellows to grasp loads grasp loads from the inside. When the gripper is exhausted, the resetting force of the bellows pushes the piston back into its initial position.

- Single-acting internal gripper
- Optionally with internal through-hole
- Max. payload: 5.1 kg
- Operating range: $\varnothing 8 \dots 85 \text{ mm}$
- Choice of two directions of bellows movement:
 - Upwards
 - Downwards
- Choice of two bellows materials:
 - Ethylene propylene rubber (EPDM)
 - Silicone
- Choice of two supply port variants:
 - At the side
 - At the rear

The technology in detail

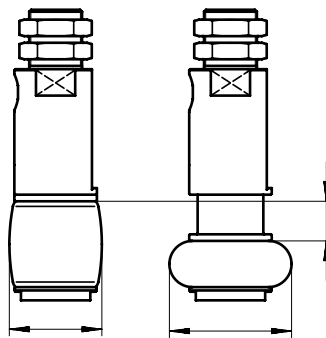
Direction of movement: upwards

Bellows exhausted/pressurised



Direction of movement: downwards

Bellows exhausted/pressurised



Bellows material

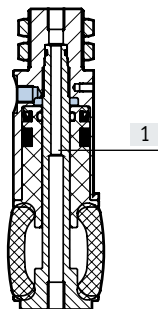
Silicone

EPDM

- Very good temperature resistance (wide range)
- Food-safe
- Longer service life than EPDM
- Contains paint-wetting impairment substances
- Higher friction coefficient than silicone
- Minimal marking of shiny surfaces

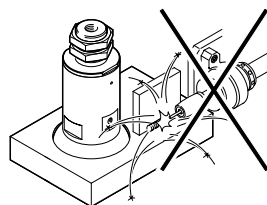
Application examples

- Gentle internal gripping of fragile workpieces (e.g. glass or ceramics).
- Transporting and packaging of glasses, cups and bottles, for example
- The internal through-hole [1] (optional) enables the workpiece to be cooled, cleaned, checked for leaks or disinfected during the handling process

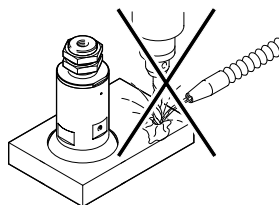


Note

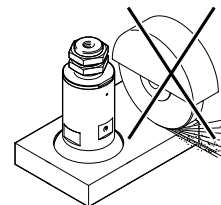
These grippers are not designed for the following applications:



- Welding spatter



- Machining
- Aggressive media

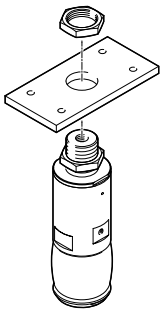


- Grinding dust

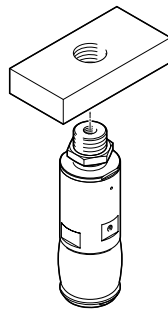
Peripherals overview

Mounting options

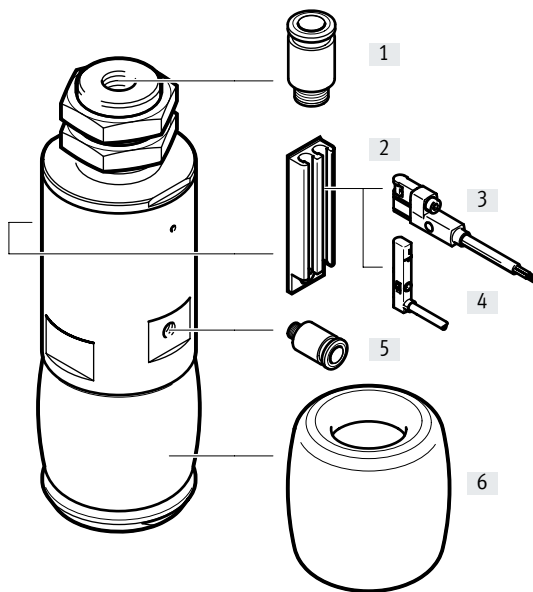
Through-hole



Threaded hole



Peripherals overview



Accessories		
Type	Description	→ Page/Internet
[1] Push-in fitting QS	<ul style="list-style-type: none"> For connecting tubing with standard O.D. In the variant with supply port at the side DHEB-...-P, this port (with internal through-hole) can be used to cool or clean the workpiece, for example, or to check it for leaks In the variant DHEB-...-P, this port is used to supply the gripper with compressed air 	qs
[2] Sensor rail DASP	<ul style="list-style-type: none"> For mounting the proximity sensors For size 27 ... 63 	11
[3] Proximity sensor SMT-10G	<ul style="list-style-type: none"> For sensing the piston position For size 27 ... 63 	12
[4] Proximity sensor SME-/SMT-10	<ul style="list-style-type: none"> For sensing the piston position For size 27 ... 63 	12
[5] Push-in fitting QS	<ul style="list-style-type: none"> For connecting tubing with standard O.D. In the variant with supply port at the side DHEB-...-L, this port is used to supply the gripper with compressed air 	qs
[6] Bellows DHAS	<ul style="list-style-type: none"> Can be replaced in the event of wear 	–