

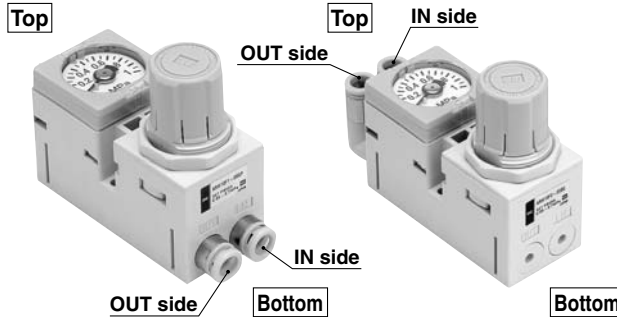


Front Handle Type ARM10F 1 - 06 B - Z - N

① ② ③ ④ ⑤ ⑥

1. IN/OUT Piping Position

Position	IN side		OUT side	
Symbol	Bottom	Top	Bottom	Top
1	●		●	
2		●		●
3	●			●
4		●	●	



Example of panel mounting



2. IN/OUT Fitting Type

Metric size

Mounting position	IN side				OUT side			
Fitting type	Straight		Elbow ^{Note)}		Straight		Elbow ^{Note)}	
Symbol	ø4	ø6	ø4	ø6	ø4	ø6	ø4	ø6
06	●				●			
07		●			●			
08		●				●		
18			●				●	
19				●			●	
20				●				●
25	●						●	
26		●					●	
27		●						●
32			●		●			
33				●	●			
34				●		●		

Inch size

Mounting position	IN side				OUT side			
Fitting type	Straight		Elbow ^{Note)}		Straight		Elbow ^{Note)}	
Symbol	ø5/32	ø1/4	ø5/32	ø1/4	ø5/32	ø1/4	ø5/32	ø1/4
56	●				●			
57		●			●			
58		●				●		
68			●				●	
69				●			●	
70				●				●
75	●						●	
76		●					●	
77		●						●
82			●		●			
83				●	●			
84				●		●		

Note) Use caution to ensure the connector is not disturbed, depending on piping direction, when choosing to attach a digital pressure switch.

3. Accessories

Symbol	None	Note 1) Bracket	Note 2) Pressure display	Panel nut	Note 3) Decorative cover
Nil	●			(●)	
B		●		(●)	
G			●		
BG		●	●	(●)	
GP			●	●	
GPC ^{Note 4)}			●	●	●

Note 1) In case of a type with bracket, the panel nut is included.

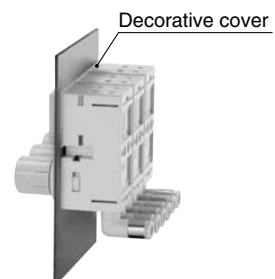
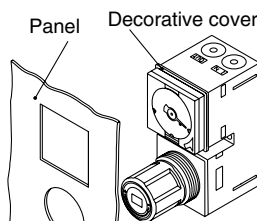
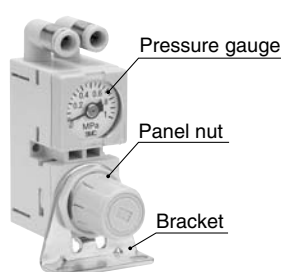
Note 2) Pressure display means a pressure gauge or digital pressure switch is attached.

When choosing to attach a digital pressure switch is chosen for attachment, be sure to enter the symbol, referring to table 6, "Digital Pressure Switch Output Specifications". Otherwise, a pressure gauge will come with the regulator.

Additionally, pressure gauges are not compatible with copper-free and fluorine-free specifications.

Note 3) Not attachable to a model with digital pressure switch.

Note 4) Please note that the dimensions will be bigger when GPC is selected.



4. Options

Symbol	None	0.35 MPa setting ^{Note 1)}	Non-relieving	^{Note 2)} Oil-free
Nil	●			
1		●		
2			●	
3				●
4		●	●	
5		●		●
6			●	●
7		●	●	●

Note 1) A pressure gauge with a full span of 0.4 MPa is attached.

Note 2) The oil-free specification is grease-free in the fluid contact area.

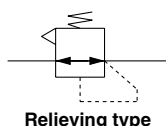
6. Digital Pressure Switch Output Specifications ^{Note)}

Symbol	Details
Nil	None
N	NPN open collector
P	PNP open collector

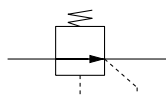
Note) When a digital pressure switch is attached, the "pressure display" in table 3 "Accessories" will be equipped.

The electrical entry is positioned on the side opposite the handle.

JIS Symbol



Relieving type



Non-relieving type

Note) A standard model is equipped with a backflow function. Main valve opens when the inlet pressure is released, and then the outlet pressure backflows into the inlet side.

5. Unit Representation

Symbol	Description
Nil	Display unit for product name plate and pressure gauge: MPa
Z ^{Note 1, 2)}	Display unit for product name plate and pressure gauge: psi
ZA ^{Note 1, 3)}	Digital pressure switch: with unit switching (MPa is initially set.)

Note 1) This option is available for use outside Japan only. (The SI unit has to be used in Japan.)

Note 2) The digital pressure switch is equipped with unit switching and initially set to psi.

Note 3) This option is available with the digital pressure switch.

Specifications

Model	ARM10	ARM10F
Regulator construction	Direct acting	
Working principal	Diaphragm regulator	
Relief mechanism	Standard	Relief type
	Optional	Non-relieving type
Backflow function ^{Note 1)}	Within (unbalance type)	
IN side tubing O.D.	ø4, ø6, ø5/32, ø1/4	
OUT side tubing O.D.	ø4, ø6, ø5/32, ø1/4	
Proof pressure	1.5 MPa	
Maximum operating pressure	1.0 MPa	
Set pressure range	Standard	0.05 to 0.7 MPa
	Optional	0.05 to 0.35 MPa (Low pressure type)
Fluid	Air	
Ambient and operating fluid temperature ^{Note 2)}	5 to 60°C	
Mass	60 g	72 g

Note 1) 0.1 MPa or greater set pressure is required when used in the reverse flow.

Note 2) 5 to 50°C when the digital pressure switch will be used.

Refer to page 512 for the digital pressure switch specifications.

⚠ Specific Product Precautions

Be sure to read before handling.

Refer to front matters 42 and 43 for Safety Instructions and pages 287 to 291 for Precautions on every series.

Maintenance

⚠ Warning

1. Make sure to perform a periodic inspection of the pressure gauge when the compact manifold regulator is installed between a solenoid valve and an actuator. Sudden pressure changes could happen and the durability of the product could be reduced. Using an electronic style pressure gauge is recommended, depending on the situation.

ARJ

AR425
to 935

AMR

ARM

ARP

IR

IRV

VEX1□

SRH

SRP

SRF

ARX20

VCHR

ITV

IC

PVQ

VEF
VEP

VER

VEA

VY2

VBA
VBAT

AP100