


The Timken Company

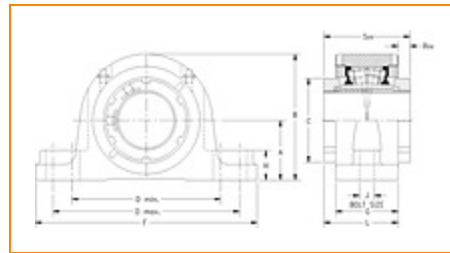
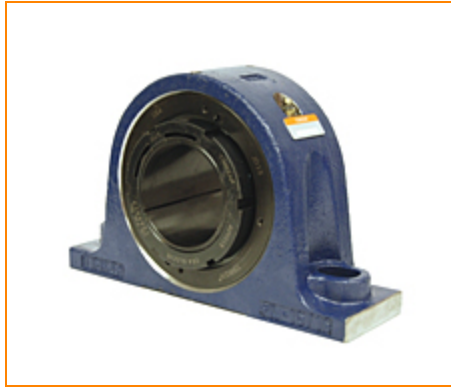
4500 Mt Pleasant St. NW

N. Canton, OH 44720

Phone: (234) 262-3000

E-Mail: CustomerCAD@timken.com • **Web site:** www.timken.com

Part Number QVVSN19V080S, Double V-Lock Two-Bolt Pillow Block



[Specifications](#) | [Dimensions](#) | [Radial and Thrust Factors](#) | [Engineering Seal Speed](#) | [Engineering Bearing Attributes](#) | [Engineering Internal Radial Clearance](#)

Specifications

Engineering Group	Mounted Bearing
Bearing Number	22219
Shaft Size	80 mm
Shaft Size Type	Metric
Full Timken Part Number	QVVSN19V080SB QVVSN19V080SC QVVSN19V080SEB QVVSN19V080SEC QVVSN19V080SEM QVVSN19V080SEN QVVSN19V080SEO QVVSN19V080SET QVVSN19V080SM QVVSN19V080SN QVVSN19V080SO QVVSN19V080ST



Locking Style	Double V-Lock
Housing Construction	Two-Bolt Pillow Block
UPC Code	0883450149266
	0883450149273
	0883450149303
	0883450149310
	0883450177696
	0883450178174
	0883450205283
	0883450205665
	0883450217705
	0883450218085
	0883450230124
	0883450230506

Dimensions

Dimension A	3.94 in 100 mm
Dimension B	7.87 in 200 mm
Dimension C	4.88 in 124 mm
Dimension D Min	10.98 in 279 mm
Dimension D Max	11.5 in 292 mm
Dimension F	13.58 in 345 mm
Dimension G	3.39 in 86 mm
Dimension H	1.53 in 39 mm

Dimension J (Bolt Size)	0.75 in 20 mm
Dimension L	4.02 in 102 mm
Dimension RVV	0.63 in 16 mm
Dimension SVV	4.65 in 118 mm

Radial and Thrust Factors

C0 - Static Load	99000 lbf 441000 N
C - Dynamic Load (Basic)	86600 lbf 385000 N
e - Geometry Factor	0.23
Y1 - Geometry Factor	2.88
Y2 - Geometry Factor	4.29

Engineering Seal Speed

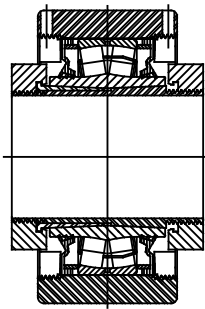
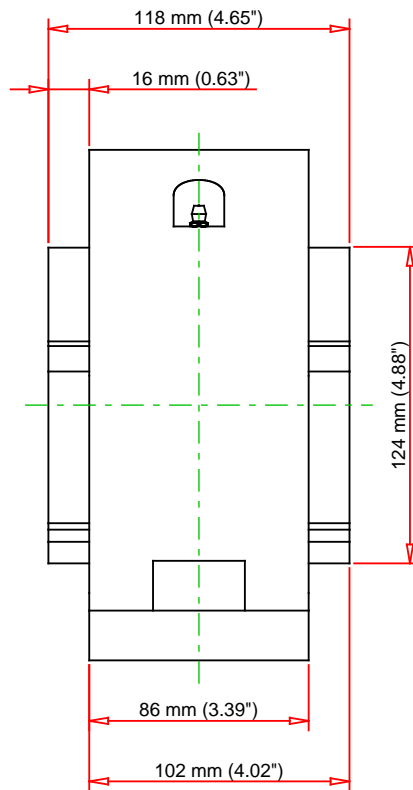
Oil Lubrication - M/N Seal	1300 rpm
Oil Lubrication - T Seal	2200 rpm
Oil Lubrication - B/C/O Seal	1000 rpm
Grease Lubrication - M/N Seal	1300 rpm
Grease Lubrication - T Seal	1800 rpm
Grease Lubrication - B/C/O Seal	950 rpm

Engineering Bearing Attributes

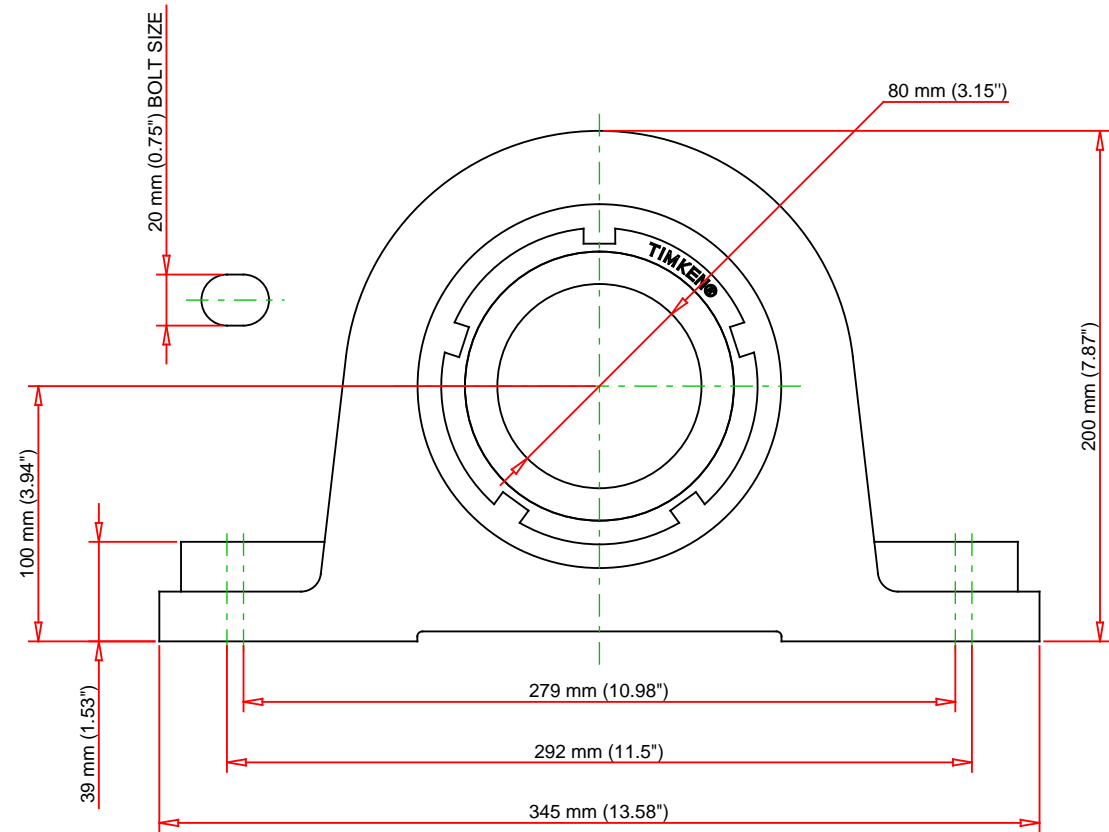
Float	0.083 in 2.108 mm
Shaft Tolerance	0.0030 in 0.076 mm

Engineering Internal Radial Clearance

Eng Internal Radial Clearance - Min	0.0043
Eng Internal Radial Clearance - Max	0.0055
Pre Install Clearance Min	0.0043 in 0.110 mm
Pre Install Clearance Max	0.0055 in 0.140 mm



Note: Section View not to Scale



C - Dynamic Load	86600	lbf	385000	N
C0 - Static Load	99000	lbf	441000	N
Weight	56	lb	25.4	kg
Max. Speed T-Seals & Grease	1800	rpm		
Rad. Clearance - Max.	0.0055			

TIMKEN

THE TIMKEN COMPANY
NORTH CANTON, OHIO USA

QVVSN19V080S
Double V-Lock Two-Bolt Pillow Block

Every reasonable effort has been made to ensure the accuracy of the information contained in this writing, but no liability is accepted for errors, omissions or for any other reason.

FOR DISCUSSION ONLY