


**The Timken Company**

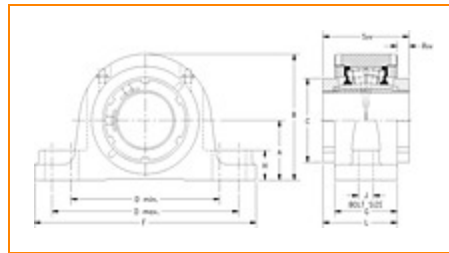
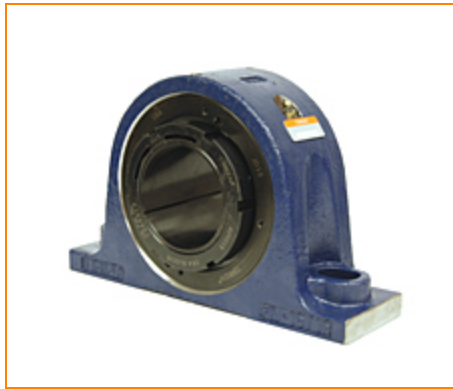
4500 Mt Pleasant St. NW

N. Canton, OH 44720

**Phone:** (234) 262-3000

**E-Mail:** [CustomerCAD@timken.com](mailto:CustomerCAD@timken.com) • **Web site:** [www.timken.com](http://www.timken.com)

## Part Number QVVSN16V070S, Double V-Lock Two-Bolt Pillow Block



[Specifications](#) | [Dimensions](#) | [Radial and Thrust Factors](#) | [Engineering Seal Speed](#) | [Engineering Bearing Attributes](#) | [Engineering Internal Radial Clearance](#)

### Specifications

<b>Engineering Group</b>	Mounted Bearing
<b>Bearing Number</b>	22216
<b>Shaft Size</b>	70 mm
<b>Shaft Size Type</b>	Metric
<b>Full Timken Part Number</b>	QVVSN16V070SB QVVSN16V070SC QVVSN16V070SEB QVVSN16V070SEC QVVSN16V070SEM QVVSN16V070SEN QVVSN16V070SEO QVVSN16V070SET QVVSN16V070SM QVVSN16V070SN



QVVSN16V070SO  
QVVSN16V070ST  
QVVSN16V070STNG

**Locking Style** Double V-Lock

**Housing Construction** Two-Bolt Pillow Block

**UPC Code**

0883450147972  
0883450147989  
0883450148016  
0883450148023  
0883450177634  
0883450178112  
0883450205221  
0883450205603  
0883450217644  
0883450218023  
0883450230063  
0883450230445  
0883450460378

## Dimensions

**Dimension A**

3.74 in  
95 mm

**Dimension B**

7.2 in  
183 mm

**Dimension C**

4.17 in  
106 mm

**Dimension D Min**

9.49 in  
241 mm

**Dimension D Max**

10.98 in  
279 mm

**Dimension F**

12.44 in  
316 mm

**Dimension G**

2.99 in  
76 mm

<b>Dimension H</b>	1.33 in 34 mm
<b>Dimension J (Bolt Size)</b>	0.75 in 20 mm
<b>Dimension L</b>	3.58 in 91 mm
<b>Dimension RVV</b>	0.59 in 15 mm
<b>Dimension SVV</b>	4.17 in 106 mm

## Radial and Thrust Factors

<b>C0 - Static Load</b>	62500 lbf 278000 N
<b>C - Dynamic Load (Basic)</b>	57200 lbf 254000 N
<b>e - Geometry Factor</b>	0.22
<b>Y1 - Geometry Factor</b>	3.14
<b>Y2 - Geometry Factor</b>	4.67

## Engineering Seal Speed

<b>Oil Lubrication - M/N Seal</b>	1500 rpm
<b>Oil Lubrication - T Seal</b>	2650 rpm
<b>Oil Lubrication - B/C/O Seal</b>	1200 rpm
<b>Grease Lubrication - M/N Seal</b>	1500 rpm
<b>Grease Lubrication - T Seal</b>	2200 rpm
<b>Grease Lubrication - B/C/O Seal</b>	1150 rpm

# Engineering Bearing Attributes

**Float**

0.083 in  
2.108 mm

**Shaft Tolerance**

0.0020 in  
0.051 mm

# Engineering Internal Radial Clearance

**Eng Internal Radial Clearance - Min**

0.0037

**Eng Internal Radial Clearance - Max**

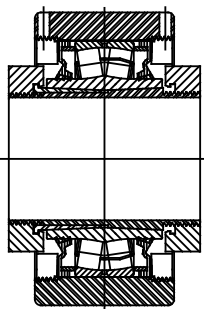
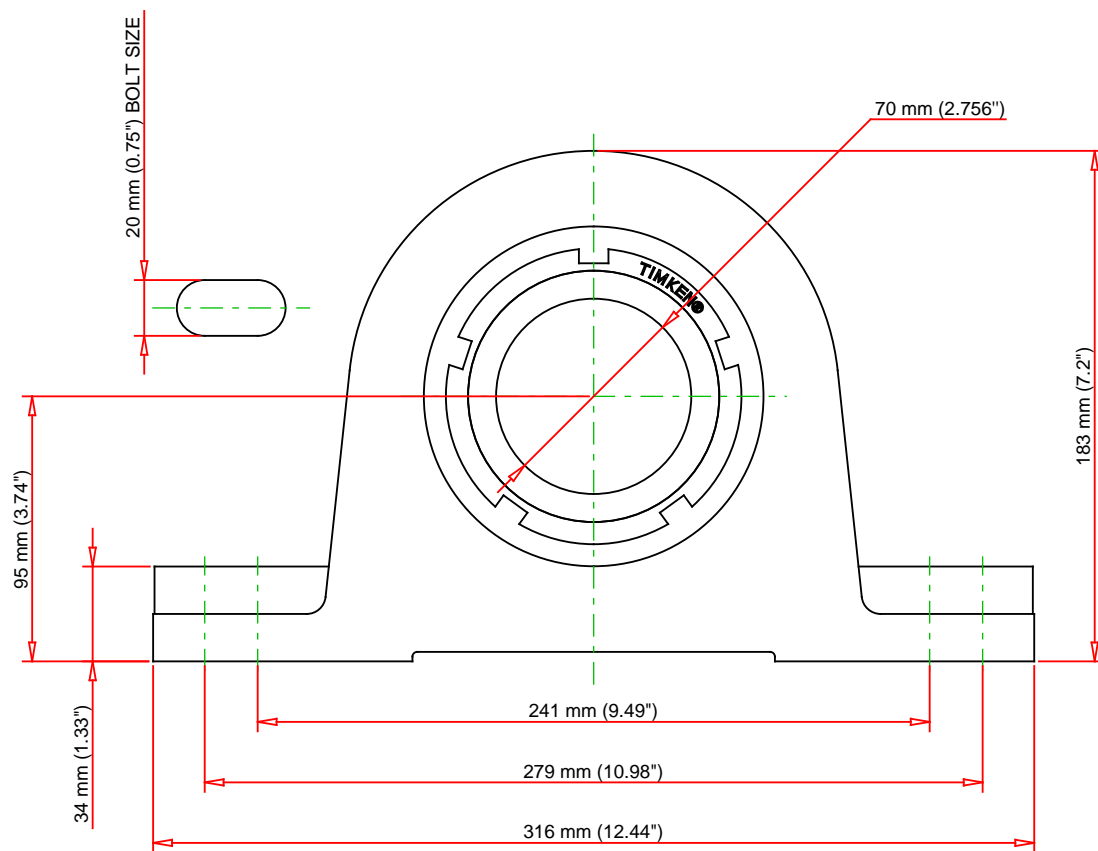
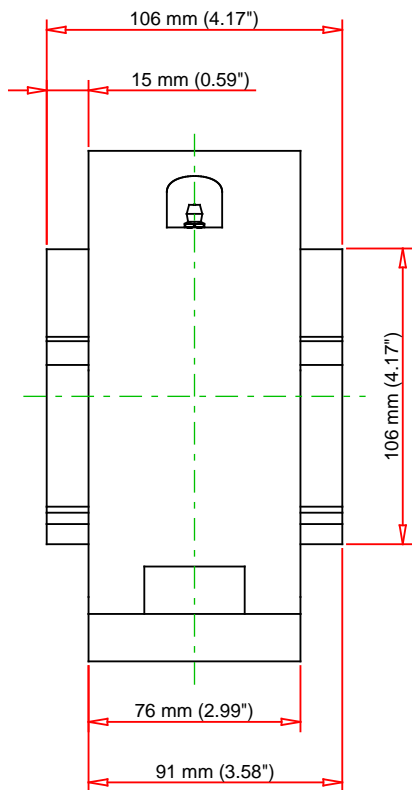
0.0047

**Pre Install Clearance Min**

0.0037 in  
0.095 mm

**Pre Install Clearance Max**

0.0047 in  
0.120 mm



Note: Section View not to Scale

C - Dynamic Load	57200	lbf	254000	N
C0 - Static Load	62500	lbf	278000	N
Weight	46	lb	20.9	kg
Max. Speed T-Seals & Grease	2200	rpm		
Rad. Clearance - Max.	0.0047			

**TIMKEN**

THE TIMKEN COMPANY  
NORTH CANTON, OHIO USA

**QVVSN16V070S**  
Double V-Lock Two-Bolt Pillow Block

Every reasonable effort has been made to ensure the accuracy of the information contained in this writing, but no liability is accepted for errors, omissions or for any other reason.

**FOR DISCUSSION ONLY**