



GLCTE25-XL

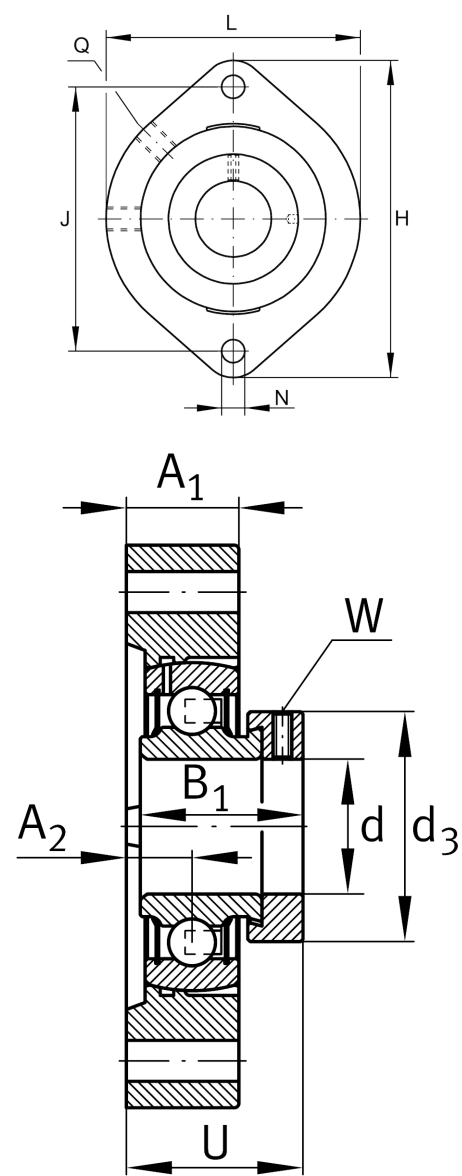
Flanged housing unit

Schaeffler ID:
0008313520000

Housing units GLCTE, two-bolt flanged housing units, cast iron, eccentric locking collar, P seals

X-life

Technical information



Main Dimensions & Performance Data

d	25 mm	Bore diameter
L	71 mm	Flange width
H	97 mm	Height flange
U	33.4 mm	Total height unit
C _r	14,000 N	Basic dynamic load rating, radial
C _{0r}	7,800 N	Basic static load rating, radial
C _{ur}	410 N	Fatigue load limit, radial
	0.47 kg	Weight

Mounting dimensions

J	76.2 mm	Distance fixing bore
N	9 mm	Fixing bore
n	2	Number of screwing holes

Dimensions

A ₁	19.5 mm	Thickness of flange
A ₂	9.9 mm	Distance raceway
B ₁	31 mm	Locking collar total width
Q	M6	Connection thread lubrication
d ₃	37.5 mm	Outside diameter eccentric locking collar

Additional information

GRAE25-NPP-B-OSE	Bearing designation
------------------	---------------------