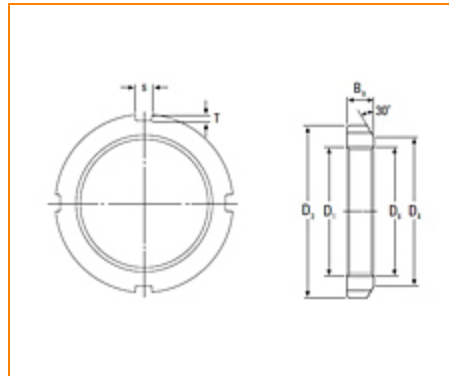




**The Timken Company**  
 4500 Mt Pleasant St. NW  
 N. Canton, OH 44720  
**Phone:** (234) 262-3000

**E-Mail:** [CustomerCAD@timken.com](mailto:CustomerCAD@timken.com) • **Web site:** [www.timken.com](http://www.timken.com)

## Part Number KM 22, Metric Locknut

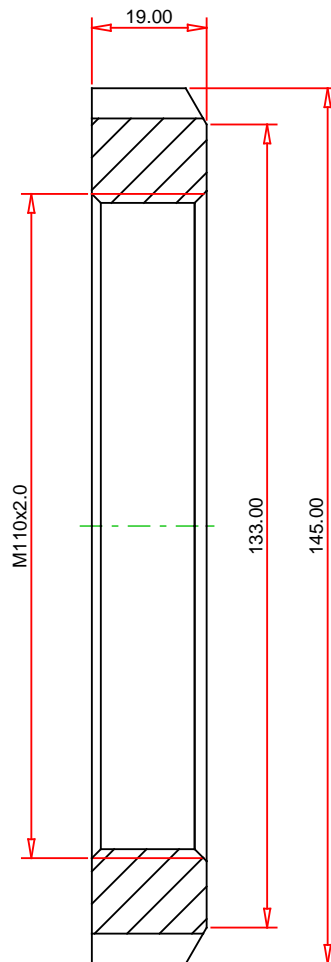
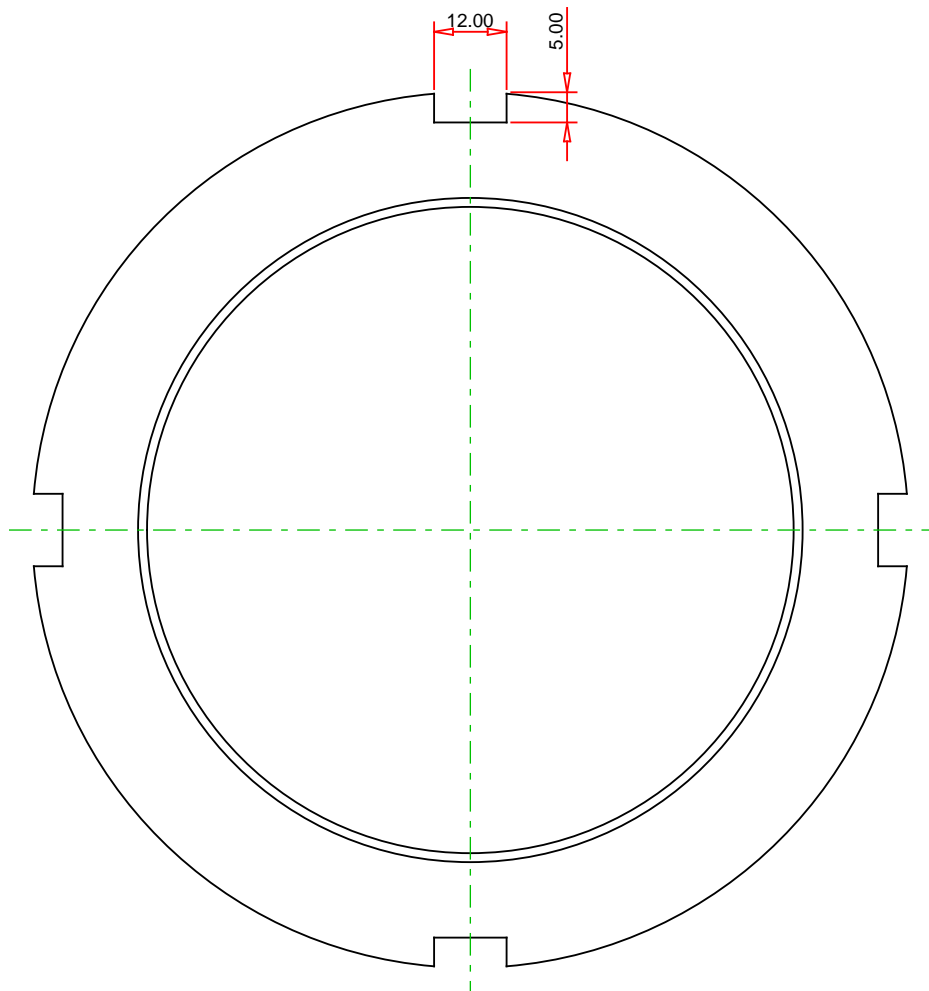


### Specifications

Thread $D_1$ <sup>1</sup>	M110x2.0
$D_3$	145 mm
$D_4$	133 mm
$B_n$	19 mm
s	12 mm
T	5 mm
Weight	0.97 Kg
Lockwasher	MB 22

<sup>1</sup> Means metric thread and the digits are major diameter of thread and pitch.

Tr means 30°; trapezoid thread and the digits are major diameter of thread and pitch.



## METRIC UNITS

**TIMKEN®**

**THE TIMKEN COMPANY**  
NORTH CANTON, OHIO USA

**KM 22**  
Metric Locknut