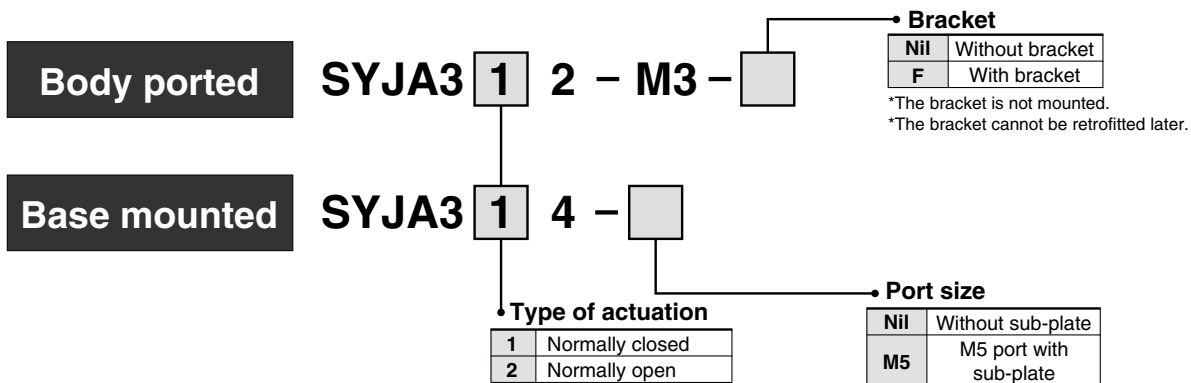


3 Port Air Operated Valve

Series *SYJA300*

How to Order



How to Order Manifold Base

Same manifolds as series SYJ300 are prepared.

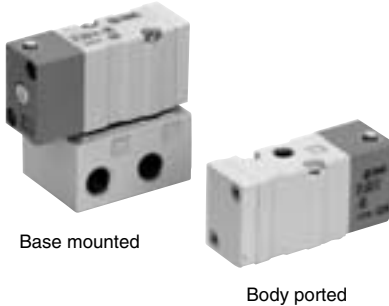
SS3YJA3 — Fill the same as SS3YJ3.

* Instruct by specifying the valves and blanking plate assembly to be mounted on the manifold along with the manifold base model no.

(Ex.) **SS3YJA3-41-03-M3** 1 set
 * SYJA314 1 set
 * SYJA324 1 set
 * SYJ300-10-2A 1 set

→ The asterisk denotes the symbol for assembly. Prefix it to the part nos. of the solenoid valve, etc.

Compact and lightweight



Specifications

Fluid	Air
Operating pressure range MPa	0.15 to 0.7
Pilot pressure range MPa ^{Note 1)}	Operating pressure range to 0.7
Ambient and fluid temperature (°C)	-10 to 60 (No freezing.)
Lubrication	Not required
Mounting orientation	Unrestricted
Impact/Vibration resistance (m/s ²) ^{Note 2)}	150/30



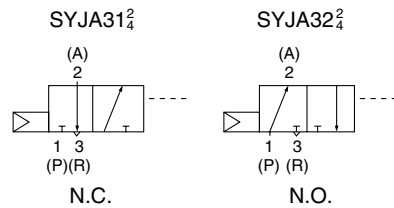
Note 1) Be certain that pressure within operating pressure range be supplied to supply port, because return pressure is introduced from supply port {1(P)} for activation.

Note 2) Impact resistance: No malfunction resulted from the impact test using a drop impact tester. The test was performed on the axis and right angle directions of the main valve, when pilot signal is ON and OFF. (Value in the initial state)

Vibration resistance: No malfunction occurred in one sweep test between 45 and 2000 Hz. Test was performed to axis and right angle directions of the main valve when pilot signal is ON and OFF. (Value in the initial state)

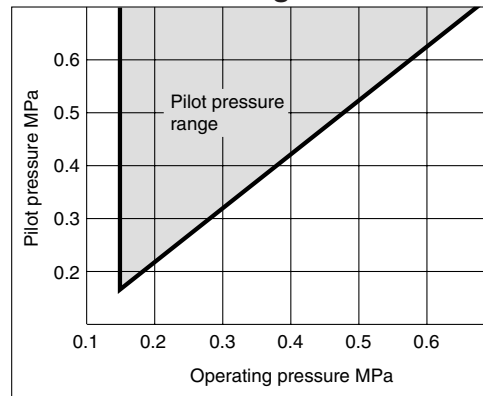
With Bracket

JIS Symbol



Air operated valve type	SYJA3 ₂ ¹ 2-M3-F
-------------------------	--

Pilot Pressure Range



Caution

Be sure to read before handling. Refer to front matters 58 and 59 for Safety Instructions and pages 3 to 7 for 3/4/5 Port Solenoid Valve Precautions.

Flow Characteristics/Mass

Valve model		Type of actuation	Port size	Flow characteristics						Pilot port size	Mass (g)	Effective area (mm ²)
				1→2 (P→A)			2→3 (A→R)					
				C [dm ³ /(s bar)]	b	Cv	C [dm ³ /(s bar)]	b	Cv			
Body ported	SYJA312-M3	N.C.	M3 x 0.5	—	—	—	—	—	—	M3 x 0.5	18	0.9
	SYJA322-M3	N.O.		—	—	—	—	—	—			
Base mounted (with sub-plate)	SYJA314-M5	N.C.	M5 x 0.8	0.41	0.18	0.086	0.35	0.33	0.086		39 (Without sub-plate 18)	—
	SYJA324-M5	N.O.		0.36	0.31	0.089	0.36	0.31	0.089			



Note) Model No. for base mounted style without sub-plate is SYJA3₂¹4.

SYA

SYJA

VZA

VFA

VFRA

V□A