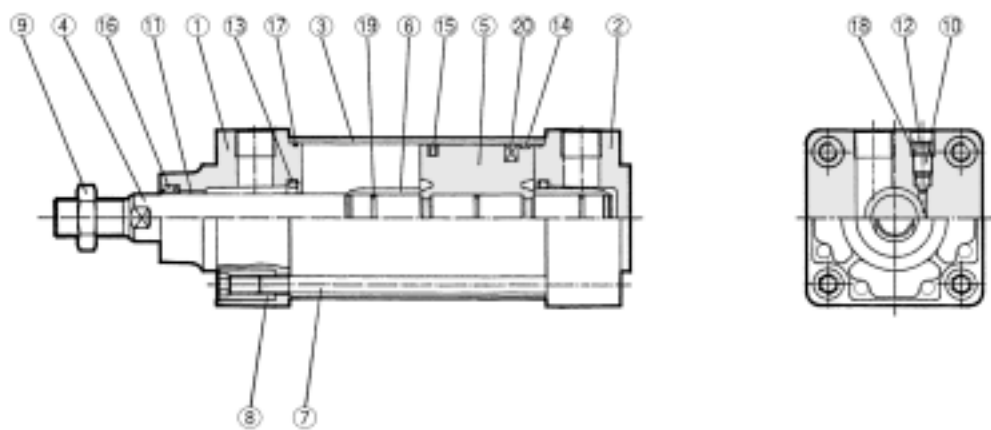


Series C95

Construction



Component Parts

No.	Description	Material	Note
①	Rod cover	Aluminum die cast	
②	Head cover	Aluminum die cast	
③	Cylinder tube	Aluminum die cast	
④	Piston rod	C45 anodised steel	
⑤	Piston	Aluminum die cast	
⑥	Cushion ring	Brass	
⑦	Tie rod	Steel	(chromated)
⑧	Tie rod nut	Steel	(chromated)
⑨	Mounting nut	Steel	(chromated)
⑩	Cushion adjustment screw	Steel	(chromated)
⑪	Bushing	Bronze bush	
⑫	Serrated washer	Steel	(chromated)
⑬	Cushion seal	PUR	

No.	Description	Material	Note
⑭	Wearing	Resin	
⑮	Piston seal	NBR	
⑯	Rod seal/Gasket	NBR	
⑰	Cylinder tube gasket	NBR	
⑱	Cushion screw seal	NBR	
⑲	Piston gasket	NBR	
⑳	Magnet ring		

Seal Kits

Bore size (mm)	Kit No.	Contents
32	CK95-32	Kits include items 13 to 17 for ø32, 12 to 18 for ø40 to ø100 from the table above.
40	CK95-40	
50	CK95-50	
63	CK95-63	
80	CK95-80	
100	CK95-100	

* Seal kits consist of items 13 to 17 for ø32, items 12 to 18 for ø40 to ø100 contained in one kit, and can be ordered using the order number for each respective tube bore size.