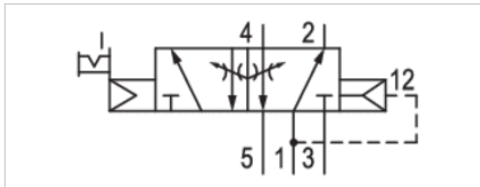



5/2-directional valve, Series 740-BV

- Basic valve without coil
- 5/2
- $Q_n = 700 \text{ l/min}$
- Pipe connection
- Electrical connection : Plug, EN 175301-803, form A
- -25 °C cold-resistant
- Can be assembled into blocks
- Manual override : with detent
- single solenoid
- With air spring return
- Pilot : Internal



| | |
|----------------------------------|---|
| Type | Diaphragm poppet valve |
| Activation | Electrically |
| Pilot | Internal |
| Sealing principle | Soft sealing |
| Blocking principle | Single base plate principle Plate principle |
| Working pressure min./max. | 1,5 ... 10 bar |
| Ambient temperature min./max. | -25 ... 50 °C |
| Medium temperature min./max. | -25 ... 50 °C |
| Medium | Compressed air |
| Max. particle size | 50 µm |
| Oil content of compressed air | 0 ... 5 mg/m ³ |
| Nominal flow Q_n | 700 l/min |
| Protection class with connection | IP65 |
| Reverse polarity protection | Protected against polarity reversal |
| Compatibility index | 14 |
| Duty cycle | 100 % |
| Typ. switch-on time | 16 ms |
| Typ. switch-off time | 35 ms |
| Mounting on manifold strip | PRS strip |
| Weight | 0,221 kg |

Technical data

| Part No. | MO | Compressed air connection | Operational voltage |
|------------|---|---------------------------|---------------------|
| | | Input | |
| R412009690 |  | Ø 8x1 | 24 V |

| Part No. | Operational voltage | Operational voltage | Voltage tolerance |
|------------|---------------------|---------------------|-------------------|
| | AC 50 Hz | AC 60 Hz | DC |
| R412009690 | 230 V | 230 V | -10% / +10% |

| Part No. | Voltage tolerance | Voltage tolerance | Power consumption | Holding power |
|------------|-------------------|-------------------|-------------------|---------------|
| | AC 50 Hz | AC 60 Hz | DC | AC 50 Hz |
| R412009690 | -20% / +10% | -10% / +20% | 2,14 W | 4,18 VA |

| Part No. | Holding power | Switch-on power | Switch-on power | Throttle |
|------------|---------------|-----------------|-----------------|---------------|
| | AC 60 Hz | AC 50 Hz | AC 60 Hz | |
| R412009690 | 3,3 VA | 6,6 VA | 5,5 VA | with throttle |

| Part No. | basic valve with electrical connector |
|------------|---------------------------------------|
| R412009690 | Basic valve without coil |

Nominal flow Q_n at 6 bar and Δp = 1 bar, MO = Manual override
order quantity 25 pcs.

Technical information

The min. control pressure must be adhered to, since otherwise faulty switching and valve failure may result!

The pressure dew point must be at least 15 °C under ambient and medium temperature and may not exceed 3 °C .

The oil content of compressed air must remain constant during the life cycle.

Use only the approved oils from AVENTICS. Further information can be found in the "Technical information" document (available in the MediaCentre).

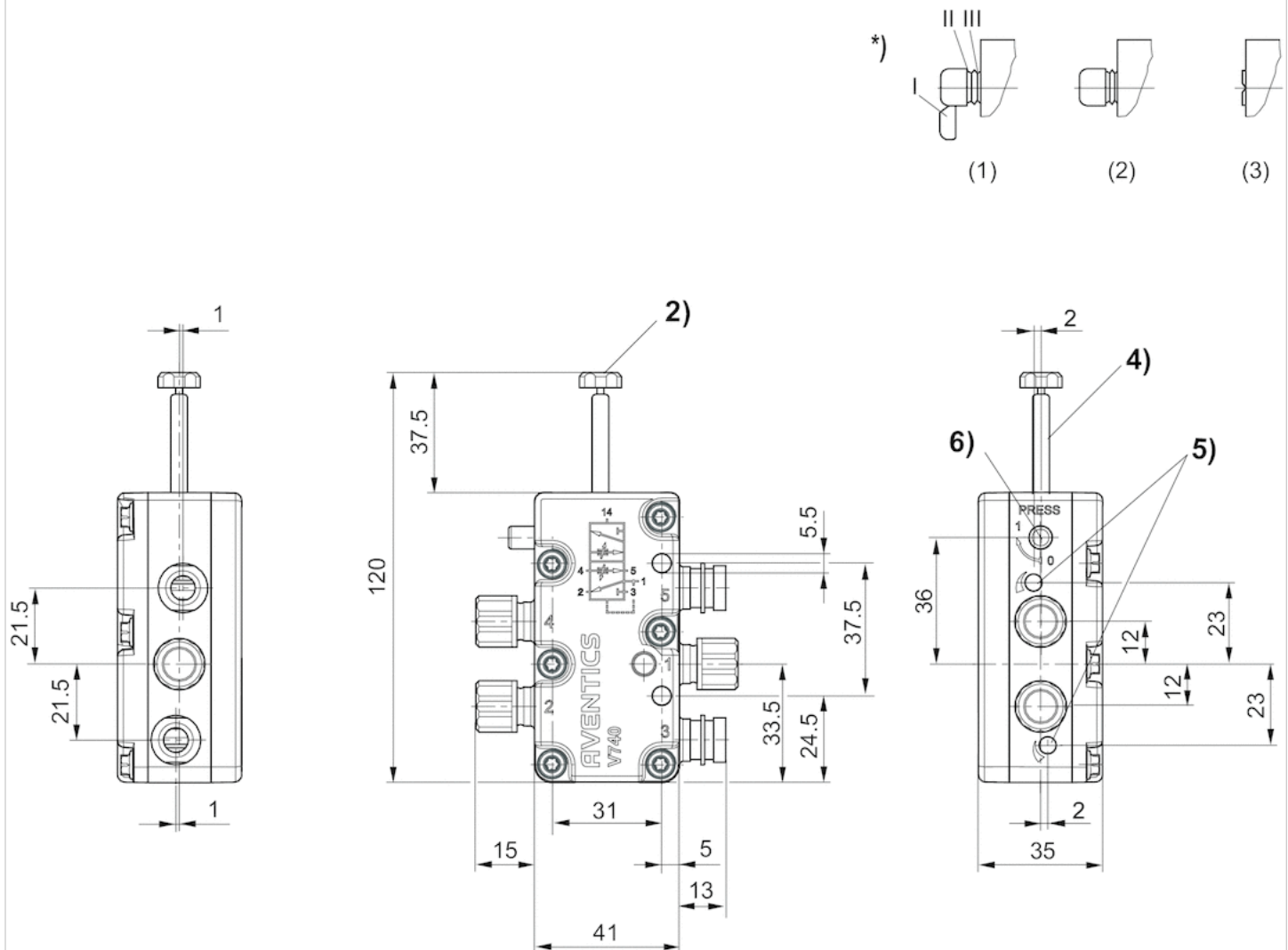
Basic valve without coil

Technical information

| Material | |
|----------|--------------------------------|
| Housing | Polyoxymethylene Polyarylamide |
| Seals | Acrylonitrile butadiene rubber |

Dimensions

Dimensions



2) M 5 internal thread

4) coil can be plugged at 45° intervals

5) throttle screw for exhausts 5 (R) and 3 (S) (S)

6) manual override and position indicator

*) : manual override:

manual actuation: (1) with detent - push and turn into position 1 (2) without detent - remove segment 1 - push only

actuation by tool: (3) with detent - remove segments up to III - push with tool and turn into position 1

Efficient pneumatic solutions, our program: cylinders and drives, valves and valve systems, air supply management



Visit us: [Emerson.com/Aventics](https://www.emerson.com/Aventics)

Your local contact: [Emerson.com/contactus](https://www.emerson.com/contactus)



Emerson.com



Facebook.com/EmersonAutomationSolutions



LinkedIn.com/company/Emerson-Automation-Solutions



Twitter.com/EMR_Automation

An example configuration is depicted on the title page. The delivered product may thus vary from that in the illustration. Subject to change. This Document, as well as the data, specifications and other information set forth in it, are the exclusive property of AVENTICS GmbH. It may not be reproduced or given to third parties without its consent. Only use the AVENTICS products shown in industrial applications. Read the product documentation completely and carefully before using the product. Observe the applicable regulations and laws of the respective country. When integrating the product into applications, note the system manufacturer's specifications for safe use of the product. The data specified only serve to describe the product. No statements concerning a certain condition or suitability for a certain application can be derived from our information. The information given does not release the user from the obligation of own judgement and verification. It must be remembered that the products are subject to a natural process of wear and aging.

The Emerson logo is a trademark and service mark of Emerson Electric Co. Brand logotype are registered trademarks of one of the Emerson family of companies. All other marks are the property of their respective owners. © 2020 Emerson Electric Co. All rights reserved.
2020-12



CONSIDER IT SOLVED™