



FAG

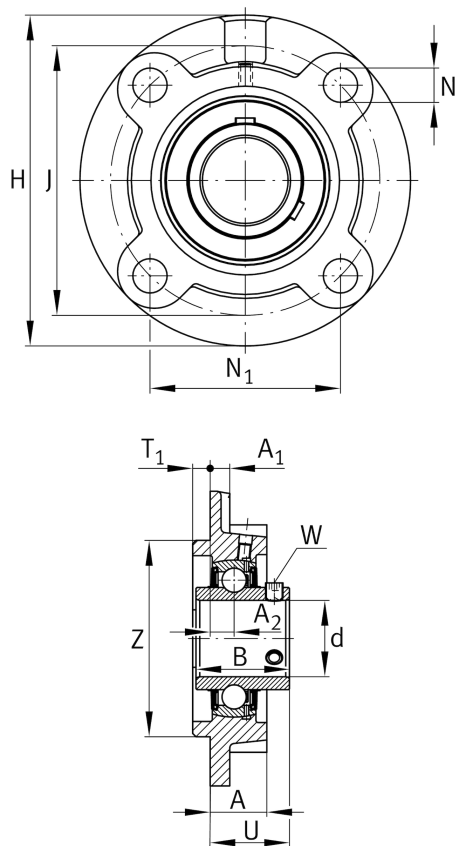
UCFC205-J7

Flanged housing unit

Schaeffler ID:  
0821715560000

Flanged housing unit UCFC

Technical information



Main Dimensions & Performance Data

d	25 mm	Bore diameter
H	115 mm	Height flange
U	29.8 mm	Total height unit
C <sub>r</sub>	14,900 N	Basic dynamic load rating, radial
C <sub>0r</sub>	7,800 N	Basic static load rating, radial
C <sub>ur</sub>	410 N	Fatigue load limit, radial
	0.94 kg	Weight

Dimensions

A	21 mm	Height housing
A <sub>1</sub>	7 mm	Thickness of flange
A <sub>2</sub>	10 mm	Distance raceway
B	34.1 mm	Width
Q	M6	Connection thread lubrication

Mounting dimensions

J	90 mm	Distance fixing bore
J	90 mm	Pitch circle diameter (holes)
N	12 mm	Fixing bore
N <sub>1</sub>	63.6 mm	Distance fixing bore
T <sub>1</sub>	6 mm	Height spigot
Z	70 mm	Diameter spigot
	h8	Diameter spigot clearance
n	4	Number of screwing holes

Additional information

1	Number of housings
FC205	Housing
UC205	Bearing designation