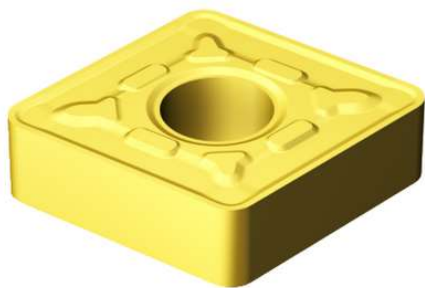


CNMG 12 04 08-MR

2025

T-Max[®] P, insert for turning >



Generic representation

 Show 3D model

Package quantity: 10

ISO: CNMG 12 04 08-MR 2025

Material Id: 5724408

EAN: 10907315

ANSI: CNMG 432-MR 2025

M

a_p 3 mm (2 - 7.6)

f_n 0.3 mm/r (0.15 - 0.55)

h_{ex} 0.3 mm/r (0.15 - 0.55)

v_c 165 m/min (215 - 120)

Workpiece material(s) (TMC1ISO)

M

Chip breaker (CBMD)

MR

Operation type (CTPT)

roughing

Insert mounting style code (IFS)

Cylindrical fixing hole

Fixing hole diameter (D1)

5.156 mm

Insert size and shape (CUTINT_SIZESHape)

CN1204

Cutting edge count (CEDC)

4

Inscribed circle diameter (IC)

12.7 mm

Insert shape code (SC)

Rhombic 80

Cutting edge effective length (LE)

12.0959 mm

Corner radius (RE)

0.7938 mm

Hand (HAND)

Neutral

Grade (GRADE)

2025

Substrate (SUBSTRATE)	HC
Coating (COATING)	CVD TiCN+Al2O3+TiN
Insert thickness (S)	4.7625 mm
Clearance angle major (AN)	0 °
Weight of item (WT)	0.0089 kg
Insert seat (SSC_M)	12
Insert seat size code imperial view (SSC_N)	1/2
Release date (ValFrom20)	17/06/1996
Release pack id (RELEASEPACK)	03.1

Copyright © Sandvik Coromant