

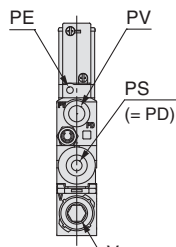
Port Layout

System depends on vacuum source (vacuum pump/vacuum ejector).

Standard Products

Port layout No. **1**

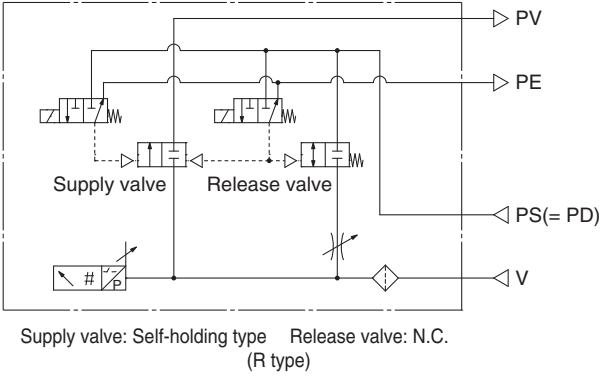
Single unit: ZK2P00□□□□-□



System	Vacuum pump	
Body type	Single unit	
Exhaust type	Without silencer	
Application and purpose	Vacuum pressure	—
	Exhaust	—
	Release pressure	Same pressure as PS

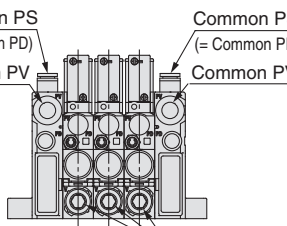
Port combination: PV ≠ PS = PD

Circuit example



Port layout No. **2**

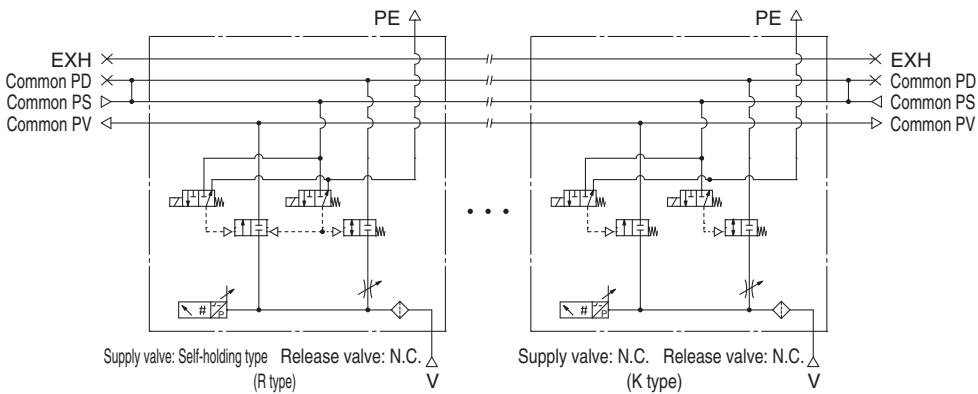
Single unit: ZK2Q00□□□□-□
Manifold: ZZZK2□□-P2□



System	Vacuum pump	
Body type	Manifold	
Exhaust type	Without silencer	
Application and purpose	Vacuum pressure	Common for each station
	Exhaust	—
	Release pressure	Same pressure as common PS

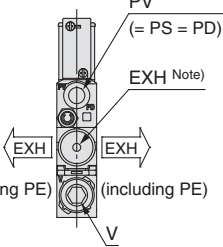
Port combination: Common PV ≠ Common PS = Common PD

Circuit example



Port layout No. **3**

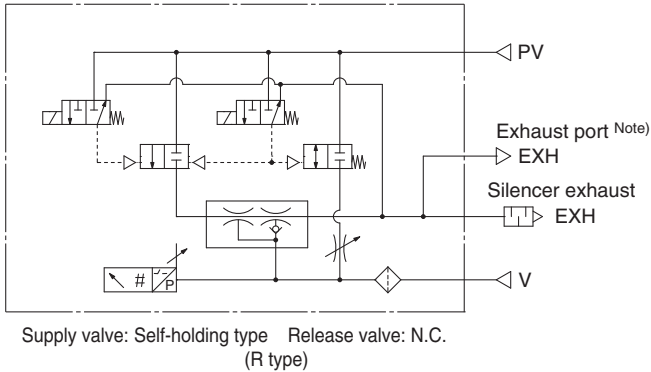
Single unit: ZK2A□□□□□□-□



System	Ejector	
Body type	Single unit	
Exhaust type	Silencer exhaust	
Application and purpose	Vacuum pressure	—
	Exhaust	Released in operating environment
	Release pressure	Same pressure as PV

Port combination: PV = PS = PD

Circuit example



Refer to page 14 for the purpose of port and the operating pressure range.

How to Order

Specifications/
Flow-rate Characteristics

Port Layout

Construction

Exploded View of Manifold

Dimensions

Specific Product Precautions