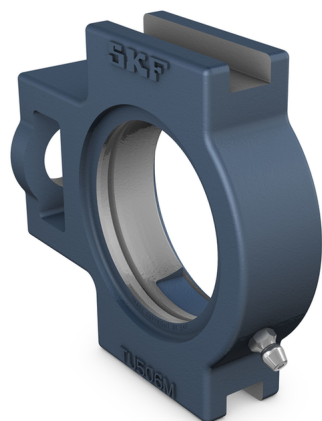


# TUJ 512

## Take-up cast iron housing for insert bearing, JIS

Take-up cast iron housings are non-split housings made of grey cast iron and are designed to provide a high degree of stiffness and accommodate heavy loads acting in different directions. These types of loads are typically encountered in conveyors, roller beds and crushers. Cast take-up housing are made of grey cast iron.

- Stiff housing
- Accommodate heavy radial loads in all directions
- Narrow width



## Overview

### Dimensions

Housing overall width	60 mm
Spherical seating diameter	110 mm

### Properties

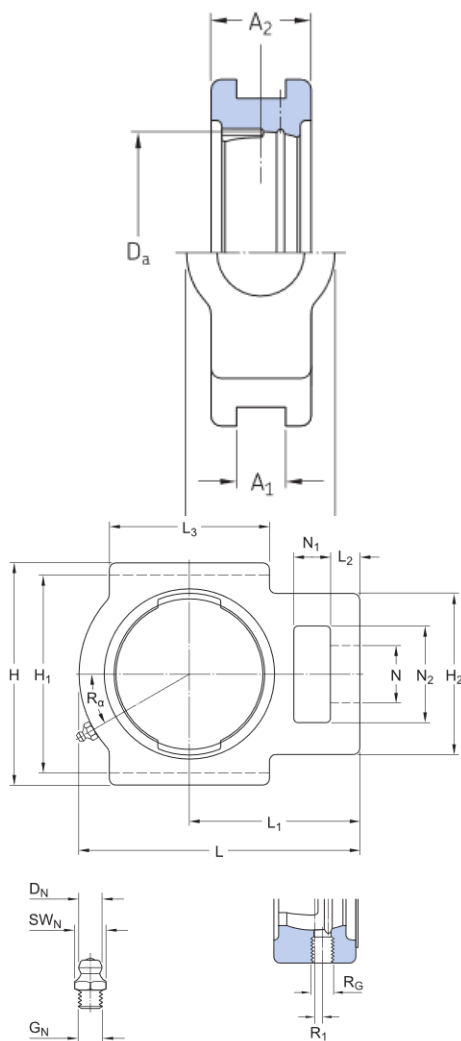
Coating	Without
Housing type	Take-up
Material, housing	Cast iron
Relubrication hole	With
Relubrication nipple	With

# Technical Specification

Material

Cast iron

## Dimensions



$D_a$	110 mm	Diameter of spherical seat
$A$	60 mm	Overall width
$A_1$	22 mm	Width of location slot
$A_2$	44 mm	Width of flange in which location slot is provided
$H$	146 mm	Overall height
$H_1$	130 mm	Distance between bottoms of location slot
$H_2$	102 mm	Height of attachment end
$L$	186 mm	Overall length
$L_1$	118 mm	Distance from attachment end face to centre line of spherical seat diameter
$L_2$	19 mm	Length attachment end
$L_3$	100 mm	Length of locations slot
$N$	35 mm	Diameter of attachment bolt hole
$N_1$	32 mm	Length of attachment slot
$N_2$	63.5 mm	Height of attachment slot

## Threaded hole

$R_G$	1/4-28 UNF	Housing thread for the grease fitting
-------	------------	---------------------------------------

$R_1$ 5.5 mm	Axial position of the housing thread
$R_0$ 30 °	Angular position of the housing thread

#### Grease fitting

$D_f$ 6.5 mm	Diameter of head sphere of grease fitting
$S_f$ 7 mm	Hexagonal key size for the grease fitting
$G_f$ 1/4-28 SAE-LT	Thread of the grease fitting

#### Mass

Mass housing	3.1 kg
--------------	--------

# Terms and conditions

By accessing and using this website / app owned and published by AB SKF (publ.) (556007-3495 · Gothenburg) ("SKF"), you agree to the following terms and conditions:

## Warranty Disclaimer and Limitation of Liability

Although every care has been taken to assure the accuracy of the information on this website / app, SKF provides this information "AS IS" and DISCLAIMS ALL WARRANTIES, EXPRESS OR IMPLIED, INCLUDING, BUT NOT LIMITED TO, IMPLIED WARRANTIES OF MERCHANTABILITY AND FITNESS FOR A PARTICULAR PURPOSE. You acknowledge that your use of this website / app is at your sole risk, that you assume full responsibility for all costs associated with use of this website / app, and that SKF shall not be liable for any direct, incidental, consequential, or indirect damages of any kind arising out of your access to, or use of the information or software made available on this website / app. Any warranties and representations in this website / app for SKF products or services that you purchase or use will be subject to the agreed upon terms and conditions in the contract for such product or service. Further, for non-SKF websites / apps that are referenced in our website / app or where a hyperlink appears, SKF makes no warranties concerning the accuracy or reliability of the information in these websites / apps and assumes no responsibility for material created or published by third parties contained therein. In addition, SKF does not warrant that this website / app or these other linked websites / apps are free from viruses or other harmful elements.

## Copyright

Copyright in this website / app copyright of the information and software made available on this website / app rest with SKF or its licensors. All rights are reserved. All licensed material will reference the licensor that has granted SKF the right to use the material. The information and software made available on this website / app may not be reproduced, duplicated, copied, transferred, distributed, stored, modified, downloaded or otherwise exploited for any commercial use without the prior written approval of SKF. However, it may be reproduced, stored and downloaded for use by individuals without prior written approval of SKF. Under no circumstances may this information or software be supplied to third parties.

This website /app includes certain images used under license from Shutterstock, Inc.

## Trademarks and Patents

All trademarks, brand names, and corporate logos displayed on the website / app are the property of SKF or its licensors, and may not be used in any way without prior written approval by SKF. All licensed trademarks published on this website / app reference the licensor that has granted SKF the right to use the trademark. Access to this website / app does not grant to the user any license under any patents owned by or licensed to SKF.

## Changes

SKF reserves the right to make changes or additions to this website / app at any time.