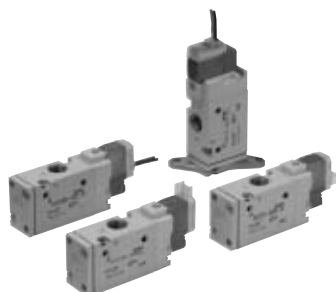
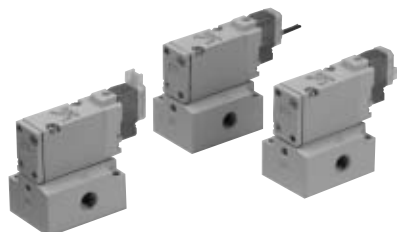




3 Port Pilot Operated Solenoid Valve Rubber Seal Series SYJ700



Body ported

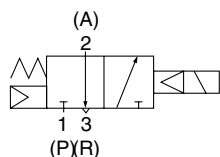


Base mounted

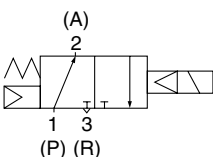
JIS Symbol

Internal pilot

SYJ71₄²

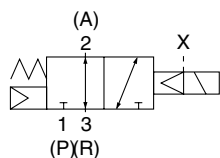


SYJ72₄²

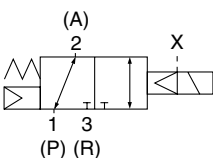


External pilot

SYJ71₄²R



SYJ72₄²R



Specifications

Fluid		Air
Operating pressure range MPa	Internal pilot	0.15 to 0.7
Ambient and fluid temperature (°C)		-10 to 50 (No freezing. Refer to page 4-18-4.)
Response time ms (at 0.5 MPa) ^{Note 1)}		30 or less
Max. operating frequency (Hz)		5
Manual override (Manual operation)		Non-locking push type, push-turn locking slotted type, push-turn locking lever type
Pilot exhaust method		Individual exhaust for the pilot valve, common exhaust for the pilot and main valve
Lubrication		Not required
Mounting orientation		Unrestricted
Shock/Vibration resistance (m/s ²) ^{Note 2)}		150/30
Enclosure		Dustproof (* DIN terminal, M8 connector conforms to IP65)



* Based on IEC529

Note 1) Based on dynamic performance test, JIS B 8374-1981. (Coil temperature: 20°C, at rated voltage, without surge voltage suppressor.)

Note 2) Impact resistance: No malfunction occurred when it is tested with a drop tester in the axial direction and at the right angles to the main valve and armature in both energized and de-energized states every once for each condition. (Value in the initial state)

Vibration resistance: No malfunction occurred in one sweep test between 45 and 2000 Hz. Test was performed to axis and right angle directions of the main valve and armature when pilot signal is ON and OFF. (Value in the initial state)

Solenoid Specifications

Electrical entry			Grommet (G), (H), L plug connector (L), M plug connector (M), DIN terminal (D), M8 connector (W)
Coil rated voltage (V)	DC	24, 12, 6, 5, 3	
	AC ⁵⁰ / ₆₀ Hz	100, 110, 200, 220	
Allowable voltage fluctuation			±10% of rated voltage
Power consumption (W)	DC	Standard	0.35 (With indicator light: 0.4 (DIN terminal with indicator light: 0.45))
		With power saving circuit	0.1 (With indicator light only)
Apparent power (VA)	AC	100 V	1.4 (With indicator light: 1.5)
		110 V [115 V]	1.6 (With indicator light: 1.7) [1.7 (With indicator light: 1.8)]
		200 V	2.3 (With indicator light: 2.4)
		220 V [230 V]	2.5 (With indicator light: 2.6) [2.7 (With indicator light: 2.8)]
Surge voltage suppressor			Diode (DIN terminal, varistor when non-polar types)
Indicator light			LED (Neon bulb when AC with DIN terminal)



* In common between 110 VAC and 115 VAC, and between 220 VAC and 230 VAC.

* For 115 VAC and 230 VAC, the allowable voltage is -15% to +5% of rated voltage.



Made to Order Specifications
(For details, refer to pages 4-4-54 to 55.)

How to Order

Rated voltage

DC

5	24 VDC
6	12 VDC
V	6 VDC
S	5 VDC
R	3 VDC

* DC specifications of type D and DO is only available with 12 and 24 VDC.

AC (50/60 Hz)

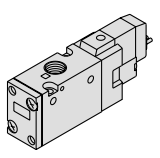
1	100 VAC
2	200 VAC
3	110 VAC [115 VAC]
4	220 VAC [230 VAC]

* For type "W□", DC voltage is only available.

Type of actuation

1	Normally closed
2	Normally open

3 port



(For manifold type 20, 21R)

Light/Surge voltage suppressor

Electrical entry for G, H, L, M and W

Nil	Without light/surge voltage suppressor
S	With surge voltage suppressor
Z	With light/surge voltage suppressor
R	With surge voltage suppressor (Non-polar type)
U	With light/surge voltage suppressor (Non-polar type)

* For AC voltage valves there is no "S" option. It is already built-in to the rectifier circuit.
* For type "R" and "U", DC voltage is only available.
* Power saving circuit is only available in the "Z" type.

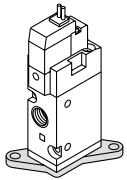
Electrical entry for D

Nil	Without light/surge voltage suppressor
S	With surge voltage suppressor (Non-polar type)
Z	With light/surge voltage suppressor (Non-polar type)

* "DOZ" is not available.
* For AC voltage valves there is no "S" option. It is already built-in to the rectifier circuit.

Bracket

Nil: Without bracket
F: With bracket



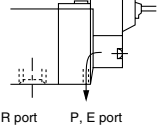
* Bracket is mounted.
* External pilot type is not available.

Thread type

Nil	Rc
F	G
N	NPT
T	NPTF

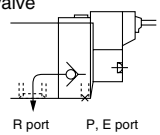
Body option

Nil: Individual pilot exhaust type



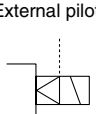
R port P, E port

M: Common exhaust for the pilot and main valve



R port P, E port

R: External pilot type*



* SYJ7□2R is only for manifold use.

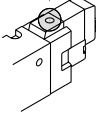
Coil specifications

Nil	Standard
T	With power saving circuit (24, 12 VDC only)

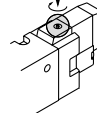
* Power saving circuit is not available in the case of "D", "DO", "W□" type.

Manual override

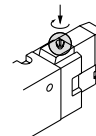
Nil: Non-locking push type



D: Push-turn locking slotted type



E: Push-turn locking lever type

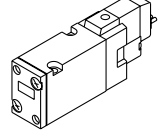


Thread type

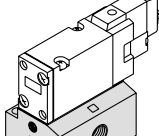
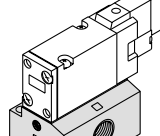
Nil	Rc
F	G
N	NPT
T	NPTF

Port size

Nil: Without sub-plate 01: 1/8 port With sub-plate 02: 1/4 port With sub-plate



(With gasket and screws)

Electrical entry

24, 12, 6, 5, 3 VDC/100, 110, 200, 220 VAC				24, 12 VDC/100, 110, 200, 220 VAC	24, 12, 6, 5, 3 VDC
Grommet	L plug connector	M plug connector		DIN terminal	M8 connector
G: Lead wire length 300 mm	L: With lead wire (Length 300 mm)	M: With lead wire (Length 300 mm)	MN: Without lead wire	D: With connector	WO: Without connector cable
H: Lead wire length 600 mm	LN: Without lead wire	LO: Without connector	MO: Without connector	DO: Without connector	

(Note) When placing an order for body ported solenoid valve as a single unit, mounting bolt for manifold and gasket are not attached. Order them separately, if necessary. (For details, refer to page 4-4-43.)

* "LN", "MN" type: with 2 sockets.
* DIN terminal "Type Y" conforming to DIN43650C standard is also available. For details, refer to page 4-4-54.
* For connector cable of M8 connector, refer to page 4-4-60.