



RA20-XL

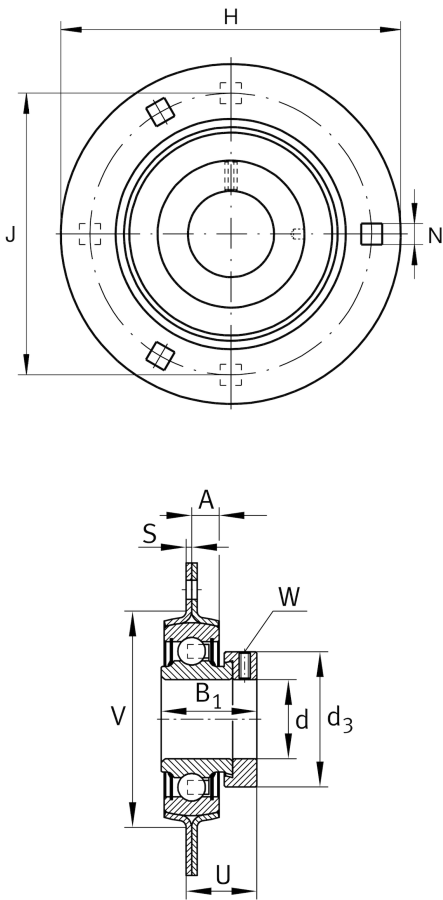
Flanged housing unit

Schaeffler ID:  
0008292770000

Flanged housing unit RA...-XL

X-life

Technical information



Main Dimensions & Performance Data

d	20 mm	Bore diameter
H	90.5 mm	Height flange
H	90.5 mm	Flange width
U	25.5 mm	Total height unit
B <sub>1</sub>	31 mm	Locking collar total width
C <sub>ur</sub>	345 N	Fatigue load limit, radial
C <sub>r</sub>	13,600 N	Basic dynamic load rating, radial
C <sub>0r</sub>	6,600 N	Basic static load rating, radial
C <sub>0rG</sub>	3,200 N	Load carrying capacity (housing)
	0.317 kg	Weight

Dimensions

A	8 mm	Height housing
S	2 mm	Thickness of flange
V	55 mm	Shoulder diameter housing
d <sub>3</sub>	33 mm	Outside diameter locking collar/locknut

Mounting dimensions

J	71.5 mm	Pitch circle diameter (holes)
N	8.7 mm	Fixing square
n	3	Number of screwing holes

Additional information

2	Number of housings
FLAN47-MSB	Housing
EXZ	Fixing
RAE20-XL-NPP-B	Bearing designation