

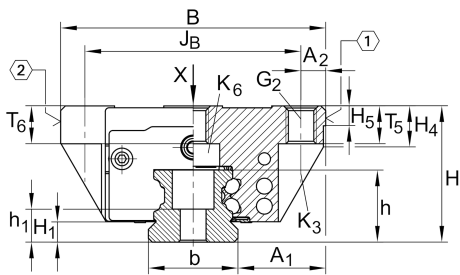
KWVE25-B-V1-G3

Recirculating ball bearing carriage

Schaeffler ID:  
0108317460240

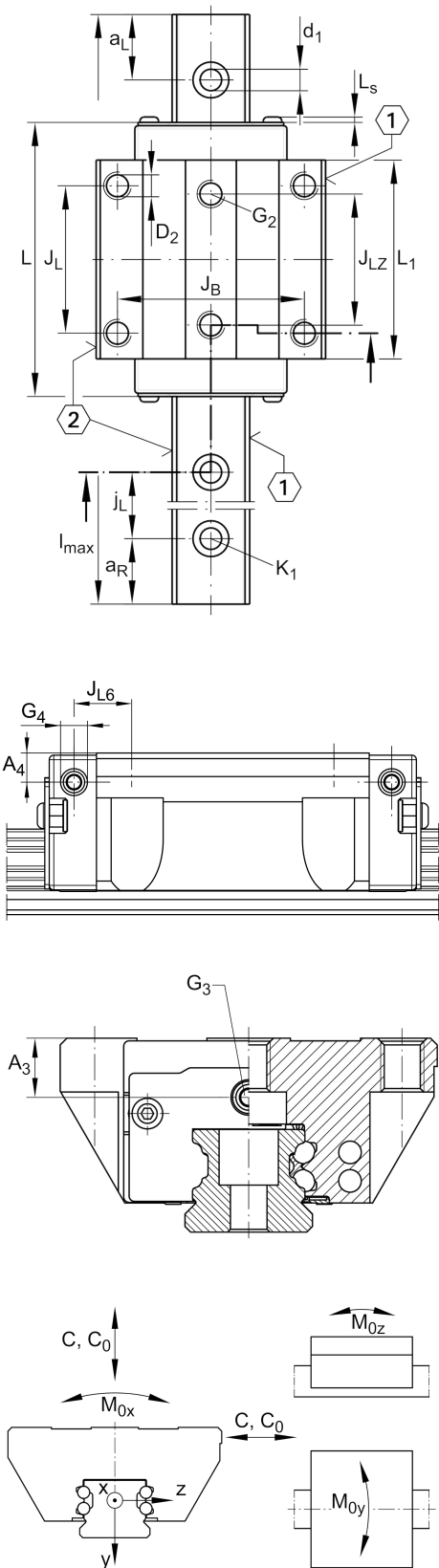
Carriages KWVE...-B, standard carriage,  
four-row, full complement ball set

Technical information



Main Dimensions & Performance Data

H	36 mm	height system
B	70 mm	width carriage
L	83.3 mm	overall length carriage
C	17,900 N	dynamic load rating
C <sub>0</sub>	37,000 N	dynamic load rating
M <sub>0x</sub>	510 Nm	static moment rating about X axis
M <sub>0y</sub>	395 Nm	static moment rating about Y axis
M <sub>0z</sub>	395 Nm	static moment rating about Z axis
	0.71 kg	Weight



Mounting dimensions

$A_1$	23.5 mm	
$J_B$	57 mm	
$b$	23 mm	width rail
$A_2$	6.5 mm	
$L_1$	60.7 mm	
$L_s$	1.65 mm	
$J_L$	45 mm	
$J_{LZ}$	40 mm	
$H_1$	5.1 mm	
$H_4$	10.9 mm	
$H_5$	5.25 mm	
$T_5$	10 mm	
$T_6$	10 mm	
$G_2$	M8	fixing screws below (DIN ISO 4762-12.9)
$G_2 M_A$	24 Nm	maximum tightening torque
$K_3$	M6	fixing screws below (DIN ISO 4762-12.9)
$K_3 M_A$	17 Nm	maximum tightening torque
$K_6$	M6	fixing screws below (DIN ISO 4762-12.9)
$K_6 M_A$	17 Nm	maximum tightening torque
$D_2$	6.7 mm	
$A_3$	11 mm	position lubrication connector
$G_3$	M6	lubrication connector
$t_{G_3}$	7 mm	maximum permissible screw depth for lubrication connectors
$A_4$	6.5 mm	position lubrication connector
$G_4$	M6 mm	lubrication connector
$t_{G_4}$	7 mm	maximum permissible screw depth for lubrication connectors
$J_{L6}$	12.85 mm	position lubrication connector

