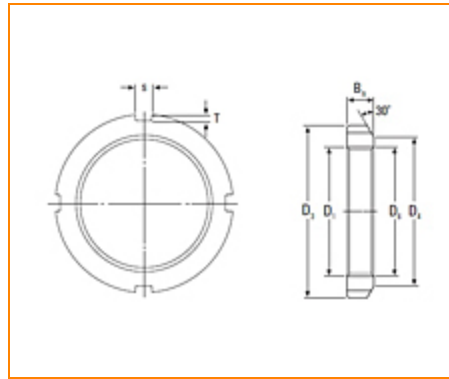




The Timken Company
 4500 Mt Pleasant St. NW
 N. Canton, OH 44720
Phone: (234) 262-3000

E-Mail: CustomerCAD@timken.com • **Web site:** www.timken.com

Part Number KM 19, Metric Locknut

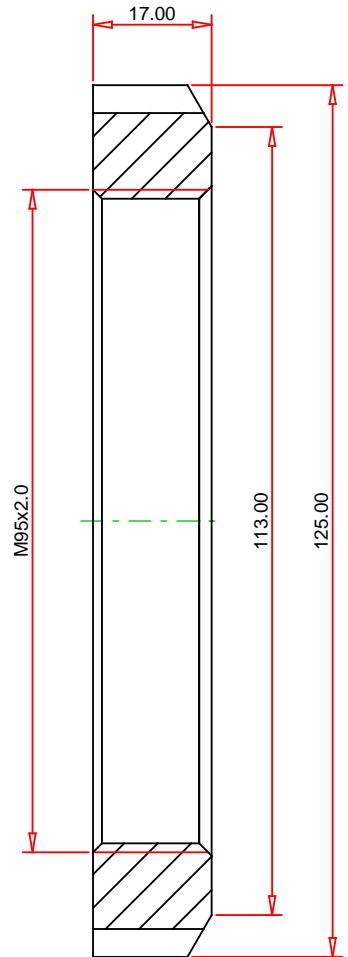
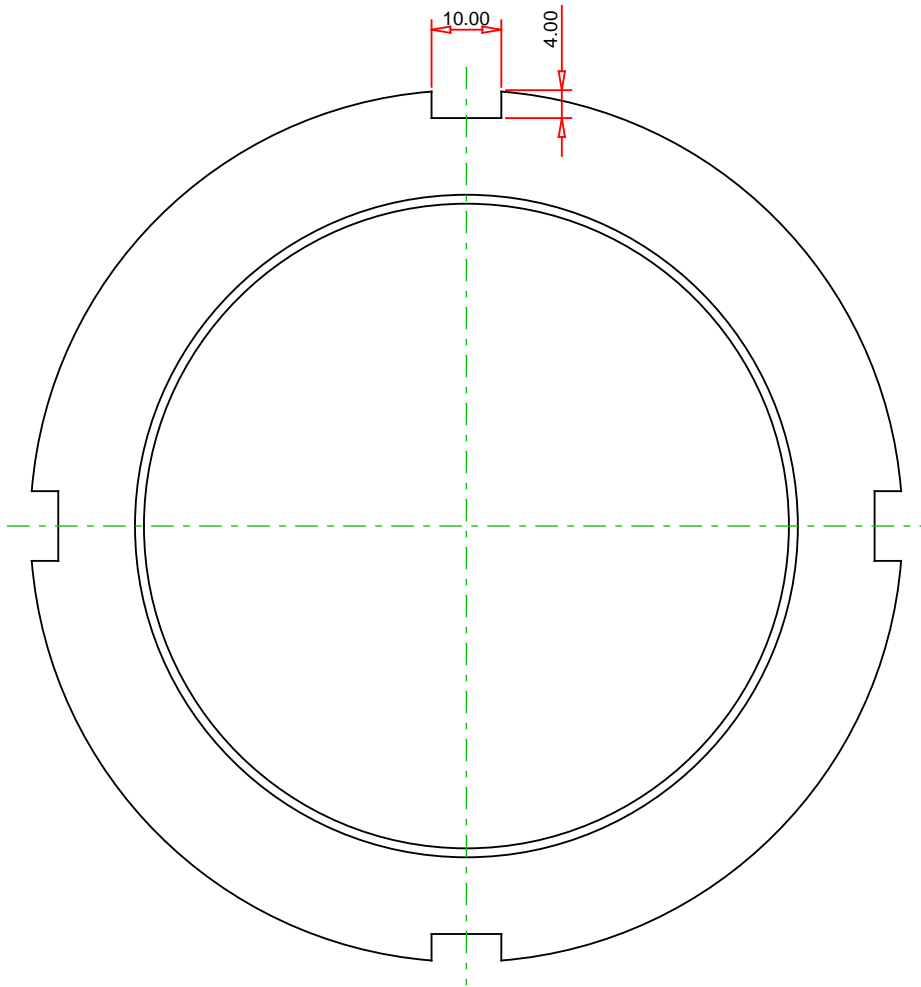


Specifications

Thread D_1 ¹	M95x2.0
D_3	125 mm
D_4	113 mm
B_n	17 mm
s	10 mm
T	4 mm
Weight	0.66 Kg
Lockwasher	MB 19

¹ Means metric thread and the digits are major diameter of thread and pitch.

Tr means 30°; trapezoid thread and the digits are major diameter of thread and pitch.



METRIC UNITS

TIMKEN®

THE TIMKEN COMPANY
NORTH CANTON, OHIO USA

KM 19
Metric Locknut