


The Timken Company

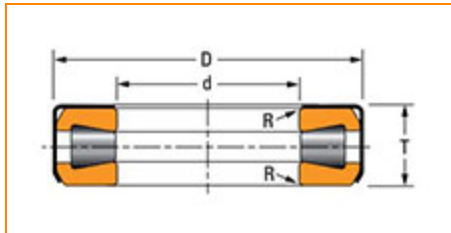
4500 Mt Pleasant St. NW

N. Canton, OH 44720

Phone: (234) 262-3000

E-Mail: CustomerCAD@timken.com • **Web site:** www.timken.com

Part Number T151W-904A2, Thrust Tapered Roller Bearings-Type TTC, TTCS, TTCL


[Specifications](#) | [Dimensions](#) | [Basic Load Ratings](#)

Specifications

Oil Holes in Retainer	Yes
d - Bore Diameter	1.51 in
Bearing Type	Thrust Tapered Roller Bearings - TTC
Weight	0.8 lb 0.3 Kg

Dimensions

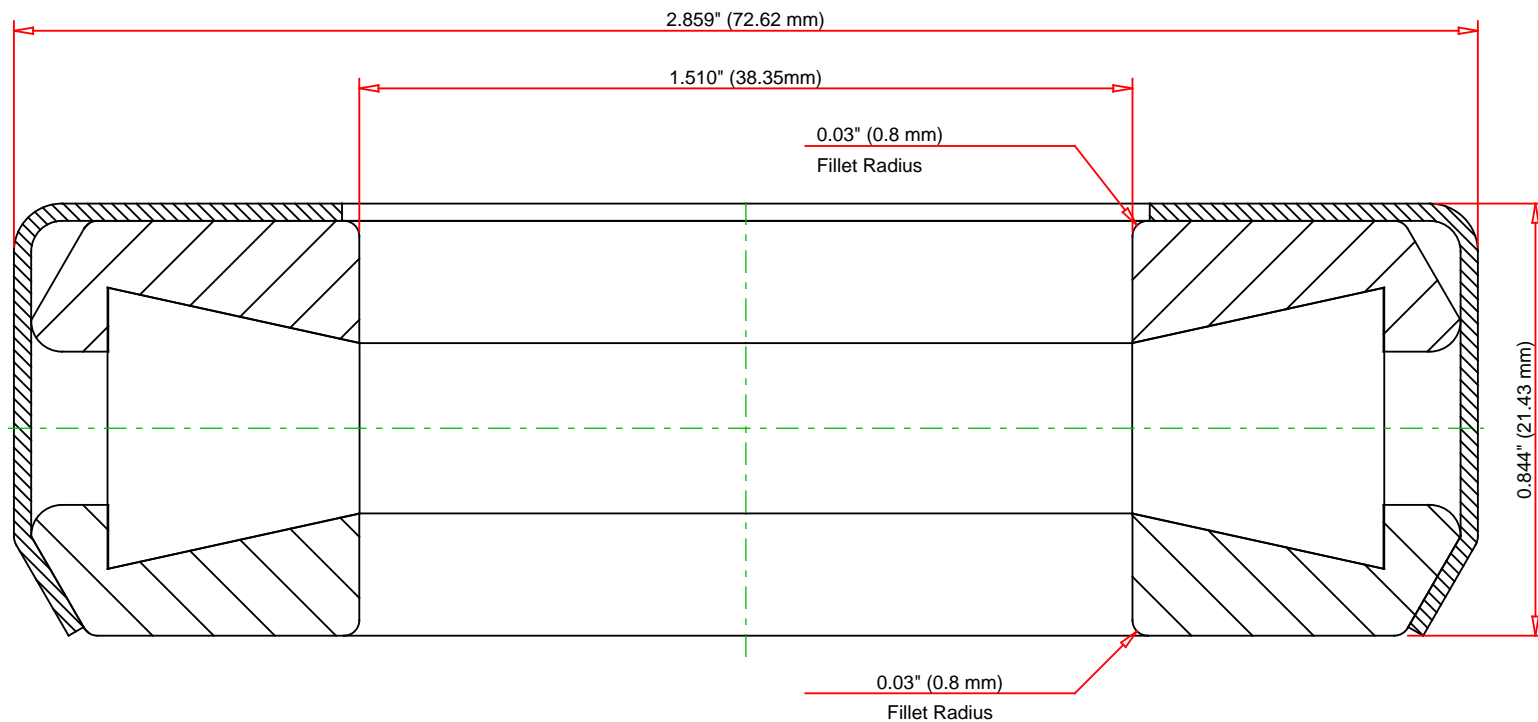
D - Bearing O.D.	2.859 in 72.619 mm
T - Bearing Width	0.8438 in 21.433 mm
R - Fillet Radius Shaft (Max)	0.03 in 0.8 mm

Basic Load Ratings



Steering Pivot Rating

10600 lbf
47000 N



IMPERIAL UNITS

Steering Pivot Rating	10600	lbf	47000	N
Weight	0.8	lb	0.3	kg

TIMKEN

THE TIMKEN COMPANY
NORTH CANTON, OHIO USA

T151W-904A2
Thrust Tapered Roller Bearings-Type
TTC, TTCS, TTCL

Every reasonable effort has been made to ensure the accuracy of the information contained in this writing, but no liability is accepted for errors, omissions or for any other reason.

FOR DISCUSSION ONLY