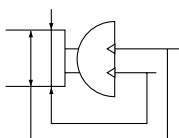


# Series MHR2/MDHR2



JIS Symbol



## Model/Specifications

Nominal size		10	15	20	30
Action		Double acting			
Gripping force (N) <sup>(1)</sup> (Effective value) at 0.5 MPa	External grip	12	24	33	58
	Internal grip	12	25	34	59
Opening/ Closing stroke (Both sides)	Finger closing width (mm)	10	14	16	19
	Finger opening width (mm)	16	22	28	37
	Stroke (mm)	6	8	12	18
Mass (g) <sup>(2)</sup>		100 (95)	180 (175)	390 (380)	760 (740)
Connection port		M3 X 0.5		M5 X 0.8	
Repeatability		±0.01mm			
Fluid		Air			
Operating pressure		0.2 to 0.6 MPa	0.15 to 0.6 MPa		
Ambient and fluid temperature		0 to 60°C			
Max. operating frequency		180 c.p.m			
Lubrication		Non-lube			



Note 1) Refer to page 494 "Effective Gripping Force" for details of Gripping force at each gripping point. Value of effective gripping force is measured at the middle of opening/closing stroke.

Note 2) ( ) Value shows MDHR mass, but it does not include auto switch mass.

When the finger opening/closing speed is set as the total stroke of 0.2 seconds or more, it may cause the product to stick or completely stop its movement.

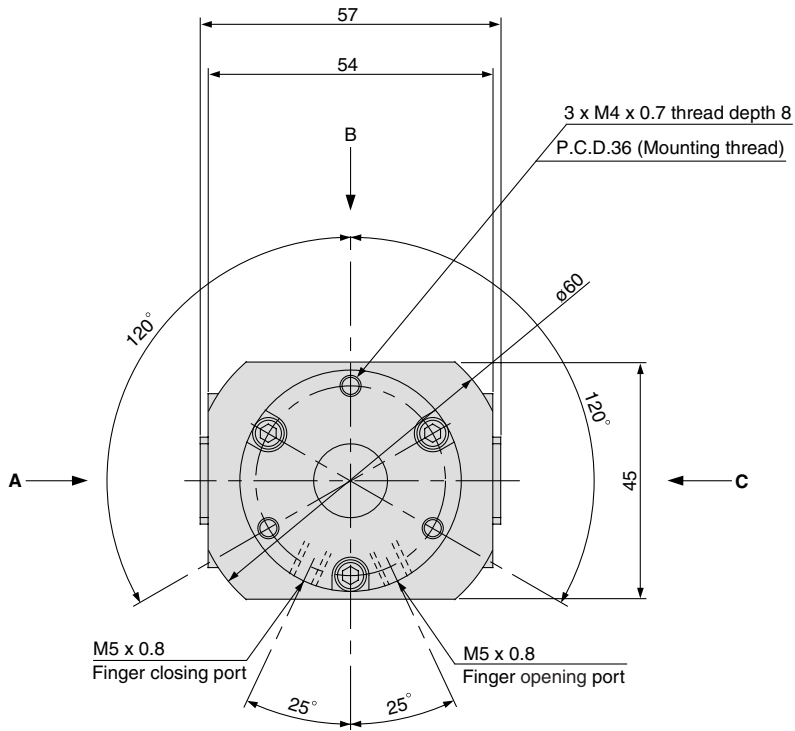


## Made to Order

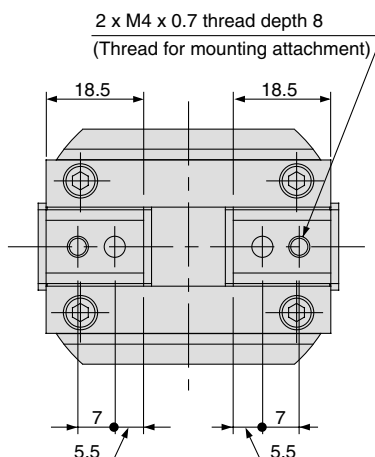
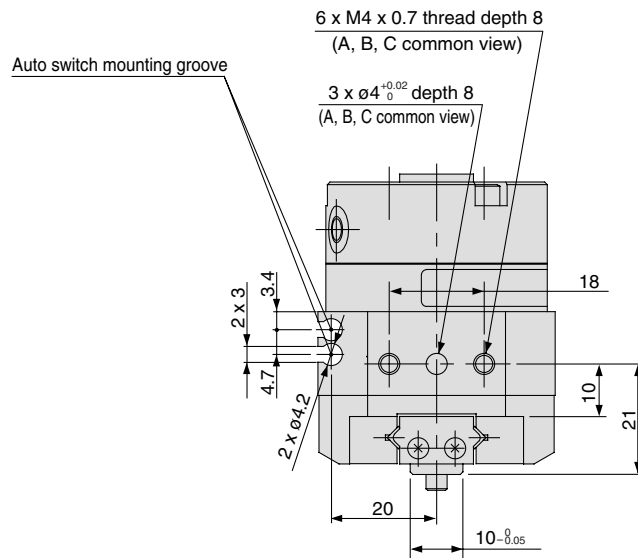
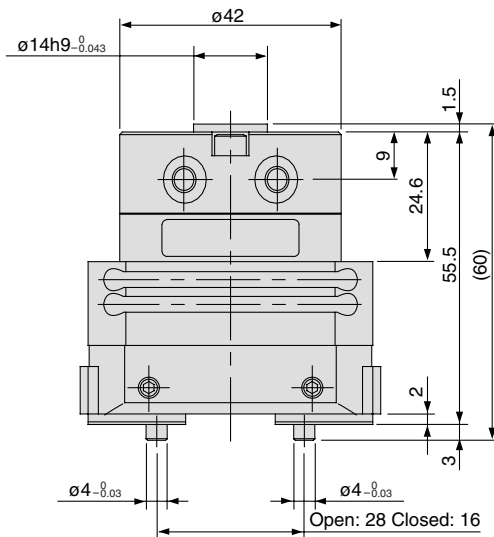
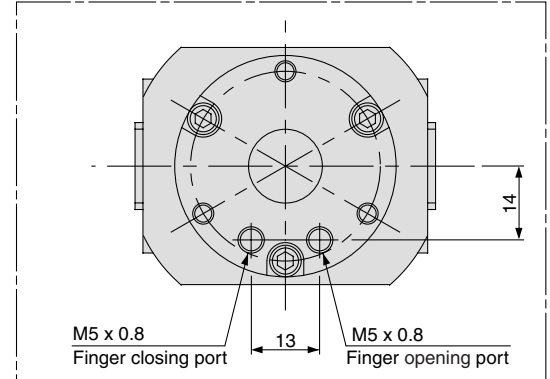
(Refer to pages 683 to 713 for details.)

Symbol	Specifications/Description
-X32	Countermeasure for condensation
-X63	Fluorine grease

With auto switch (Built-in magnet) : MDHR2-20R



MDHR2-20E Port Location



MHZ

MHF

MHL

**MHR**

MHK

MHS

MHC

MHT

MHY

MHW

-X□

MRHQ

MA

D-□