


The Timken Company

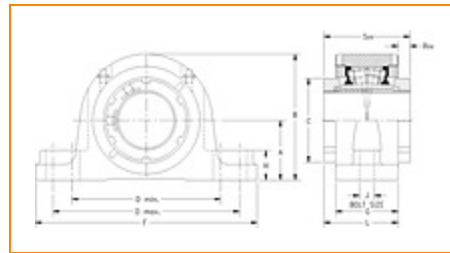
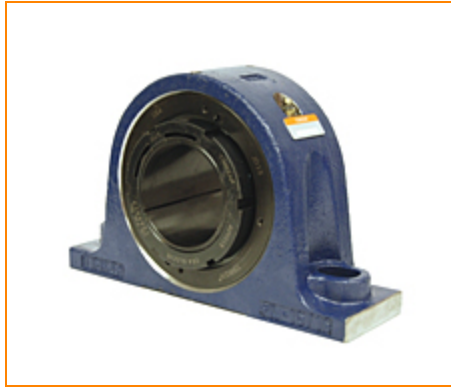
4500 Mt Pleasant St. NW

N. Canton, OH 44720

Phone: (234) 262-3000

E-Mail: CustomerCAD@timken.com • **Web site:** www.timken.com

Part Number QVVSN11V050S, Double V-Lock Two-Bolt Pillow Block



[Specifications](#) | [Dimensions](#) | [Radial and Thrust Factors](#) | [Engineering Seal Speed](#) | [Engineering Bearing Attributes](#) | [Engineering Internal Radial Clearance](#)

Specifications

Engineering Group	Mounted Bearing
Bearing Number	22211
Shaft Size	50.000 mm
Shaft Size Type	Metric
Full Timken Part Number	QVVSN11V050SB QVVSN11V050SC QVVSN11V050SEB QVVSN11V050SEC QVVSN11V050SEM QVVSN11V050SEN QVVSN11V050SEO QVVSN11V050SET QVVSN11V050SM QVVSN11V050SN QVVSN11V050SO QVVSN11V050ST



Locking Style	Double V-Lock
Housing Construction	Two-Bolt Pillow Block
UPC Code	0883450087612
	0883450098847
	0883450099516
	0883450107983
	0883450108188
	0883450114851
	0883450114981
	0883450130363
	0883450130493
	0883450138376
	0883450138727
	0883450358057

Dimensions

Dimension A	2.76 in 70 mm
Dimension B	5.35 in 136 mm
Dimension C	2.99 in 76 mm
Dimension D Min	7.2 in 183 mm
Dimension D Max	8.5 in 216 mm
Dimension F	10 in 254 mm
Dimension G	2.68 in 68 mm
Dimension H	1 in 25 mm

Dimension J (Bolt Size)	0.625 in 16 mm
Dimension L	3.35 in 85 mm
Dimension RVV	0.67 in 17 mm
Dimension SVV	4.02 in 102 mm

Radial and Thrust Factors

C0 - Static Load	31900 lbf 142000 N
C - Dynamic Load (Basic)	31400 lbf 140000 N
e - Geometry Factor	0.23
Y1 - Geometry Factor	2.95
Y2 - Geometry Factor	4.40

Engineering Seal Speed

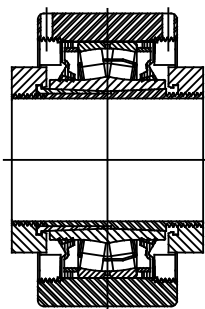
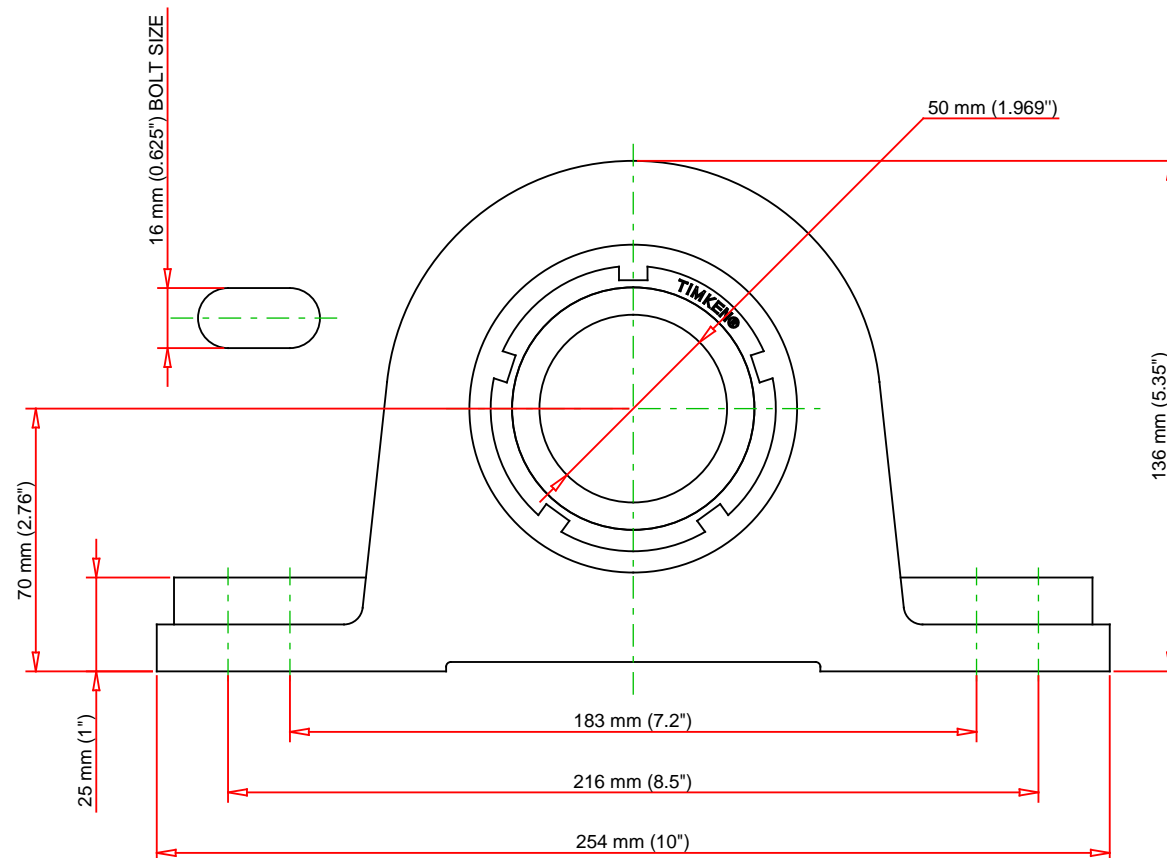
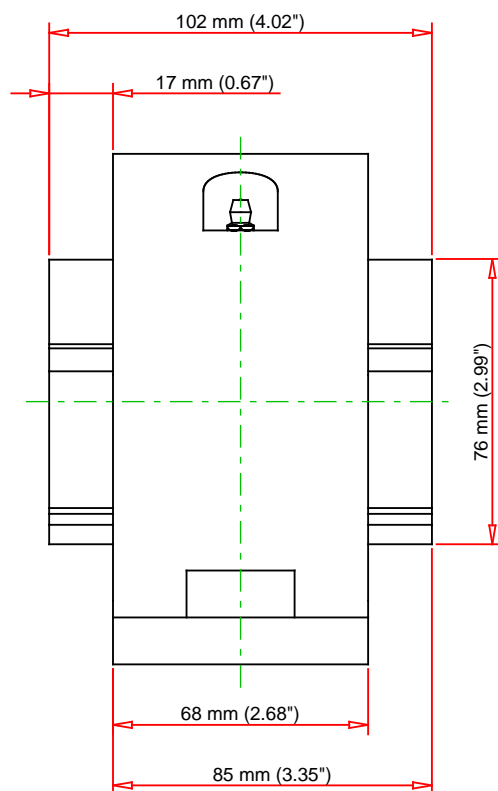
Oil Lubrication - M/N Seal	2200 rpm
Oil Lubrication - T Seal	3800 rpm
Oil Lubrication - B/C/O Seal	1800 rpm
Grease Lubrication - M/N Seal	2200 rpm
Grease Lubrication - T Seal	3200 rpm
Grease Lubrication - B/C/O Seal	1600 rpm

Engineering Bearing Attributes

Float	0.050 in 1.270 mm
Shaft Tolerance	0.0015 in 0.038 mm

Engineering Internal Radial Clearance

Eng Internal Radial Clearance - Min	0.0030
Eng Internal Radial Clearance - Max	0.0037
Pre Install Clearance Min	0.0030 in 0.075 mm
Pre Install Clearance Max	0.0037 in 0.094 mm



Note: Section View not to Scale

C - Dynamic Load	31400	lbf	140000	N
C0 - Static Load	31900	lbf	142000	N
Weight	29	lb	13.2	kg
Max. Speed T-Seals & Grease	3200	rpm		
Rad. Clearance - Max.	0.0037			

TIMKEN

THE TIMKEN COMPANY
NORTH CANTON, OHIO USA

QVVSN11V050S
Double V-Lock Two-Bolt Pillow Block

Every reasonable effort has been made to ensure the accuracy of the information contained in this writing, but no liability is accepted for errors, omissions or for any other reason.

FOR DISCUSSION ONLY