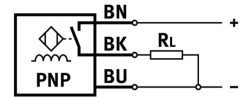
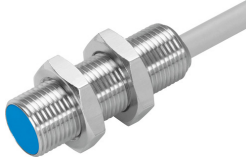


Proximity sensor SIEH-M12B-PS-K-L-CR

Part number: 538252

FESTO



[PDF](#) General operating condition

Data sheet

| Feature | Value |
|---|---|
| Conforms to standard | EN 60947-5-2 |
| Symbol | 00991702 |
| Approval | RCM trademark c UL us listed (OL) |
| CE mark (see declaration of conformity) | To EU EMC Directive |
| Rated operating distance | 6 mm |
| Assured operating distance | 4.86 mm |
| Reduction factors | Aluminium = 1.0 Stainless steel, 1 mm thick = 0.45 Stainless steel, 2 mm thick = 0.9 Copper = 0.85 Brass = 1.3 Steel St 37 = 1.0 |
| Ambient temperature | -25 °C ... 70 °C |
| Switching output | PNP |
| Switching element function | N/O contact |
| Reproducibility of switching values FS | 0.3 mm |
| Hysteresis | ≤0.73 mm |
| Max. switching frequency | 600 Hz |
| Max. output current | 200 mA |
| Voltage drop | 2 V |
| Inductive protective circuit | Integrated Output current < 100 mA and switching frequency < 10 Hz |
| Short circuit current rating | Pulsed |
| Operational voltage range DC | 10 V ... 30 V |
| Residual ripple | 20% |
| No-load supply current | <12 mA |
| Reverse polarity protection | For all electrical connections |
| Electrical connection | 3-wire Cable |
| Material cable sheath | TPE-U(PUR) |
| Size | M12 |
| Type of mounting | Via lock nut |
| Mounting type | Flush |
| Product weight | 90 g |
| Material housing | High-alloy steel |
| Switching status indication | Yellow LED |

| Feature | Value |
|---|---------------------------------|
| Ambient temperature with moving cable | -5 °C ... 70 °C |
| Degree of protection | IP67 IP69K |
| Housing pressure resistance | 80 bar |
| Corrosion resistance class CRC | 2 - Moderate corrosion stress |
| LABS (PWIS) conformity | VDMA24364-B2-L |
| Additional information for sensor selection | with increased sensing distance |
| Electrical output | PNP |
| Selection of sensor design | Stainless steel housing |