



The Timken Company

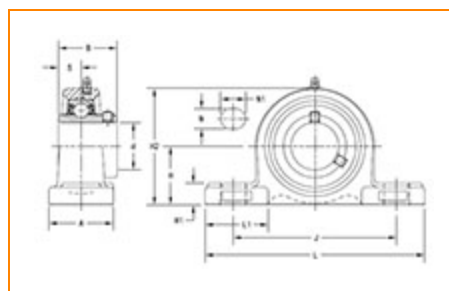
4500 Mt Pleasant St. NW

N. Canton, OH 44720

Phone: (234) 262-3000

E-Mail: CustomerCAD@timken.com • **Web site:** www.timken.com

Part Number UCP324, UCP 300 Pillow Block Mounted Bearings - Set Screw Locking



[Specifications](#) | [Dimensions](#) | [Basic Load Ratings](#)

Specifications

Bearing Number	UC324
Shaft Size d	120 mm
Locking Style	Set Screw Locking
Housing Construction	Two-Bolt Pillow Block

Dimensions

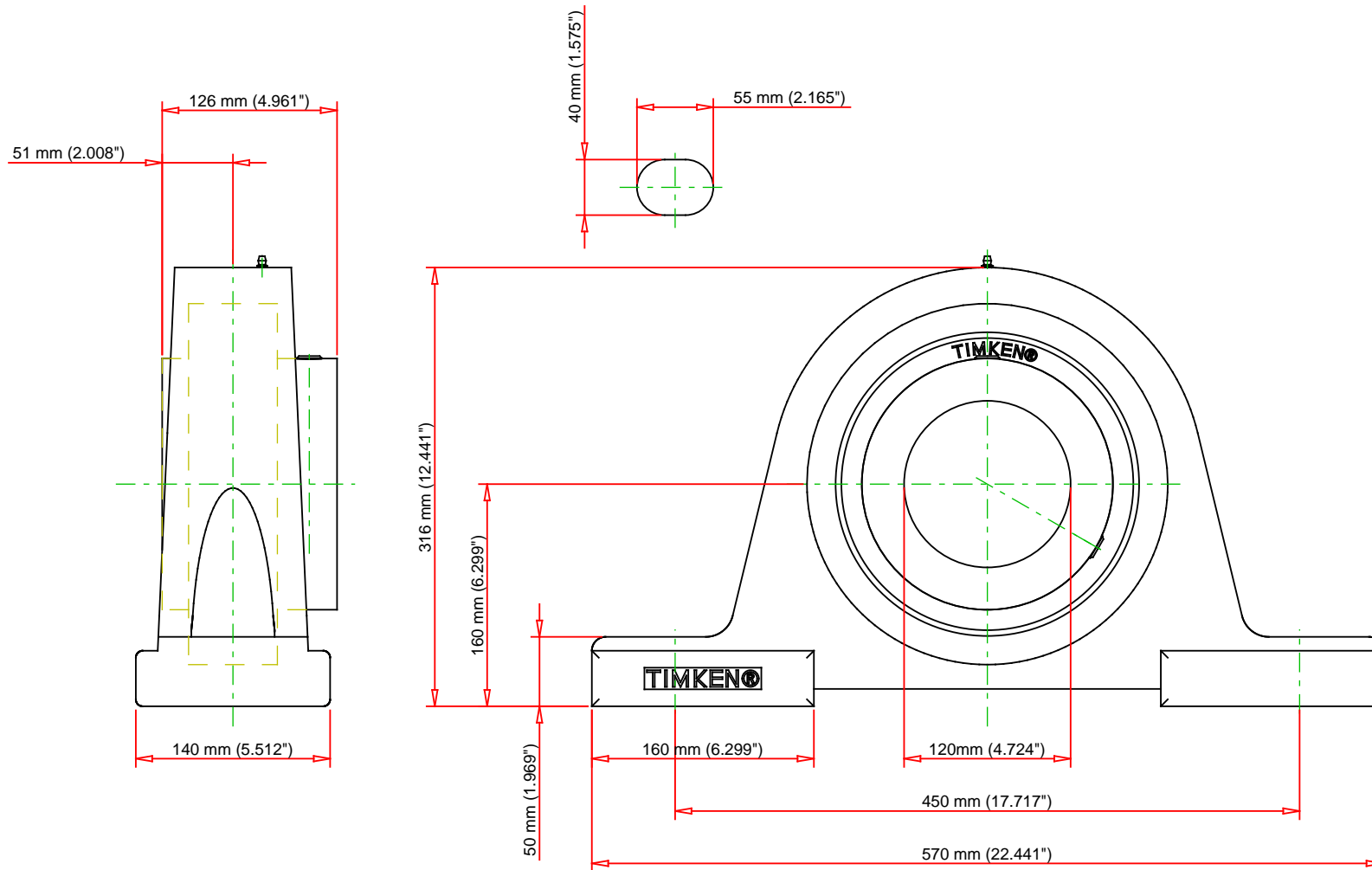
Base to Center Height H	160 mm 6.299 in
Total Length L	570 mm 22.441 in
Housing Width A	140.000 mm 5.512 in
Bolt Hole Spacing J	450 mm 17.717 in



Bolt Hole Size N	40 mm 1.575 in
Bolt Hole Length N1	55 mm 2.165 in
Foot Height H1	50 mm
Total Height H2	316 mm 12.441 in
Dimension L1	160 mm 6.299 in
Inner Ring Width B	126 mm 4.961 in
Center of Bearing from End S	51 mm 2.008 in

Basic Load Ratings

Static Load Rating	185000 N 41590 lbf
Dynamic Load Rating	207000 N 46536 lbf



Bearing Number	UC324			
Load Ratings - C _r	46536	lbf	207000	N
Load Ratings - C _{0r}	41590	lbf	185000	N
Weight	122.1	lb	55.4	kg
Bolt Size	N/A			

TIMKEN

THE TIMKEN COMPANY
NORTH CANTON, OHIO USA

UCP324

UCP 300 Pillow Block Mounted Bearings -
Set Screw Locking

Every reasonable effort has been made to ensure the accuracy of the information contained in this writing, but no liability is accepted for errors, omissions or for any other reason.

FOR DISCUSSION ONLY