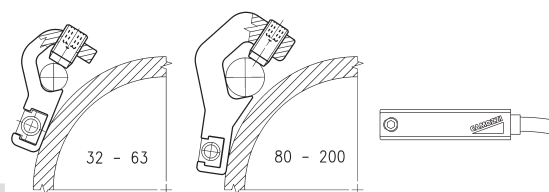


Adapters Mod. S-CST-25..28 for Series CST-CSH-CSG sensors

Material: anodized aluminium

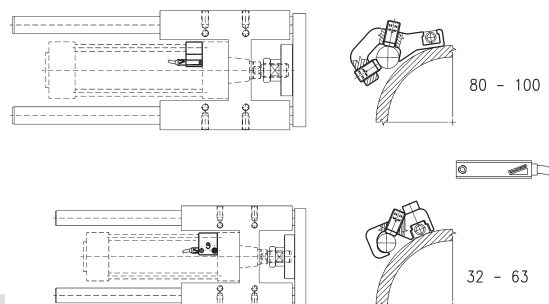


Mod.	Cylinders Series	Ø
S-CST-25	90, 63MT	32 ÷ 63
S-CST-26	90, 63MT	80 ÷ 100
S-CST-27	90, 63MT	125
S-CST-28	40	160 - 200

Adapters for Series CST-CSH-CSG sensors



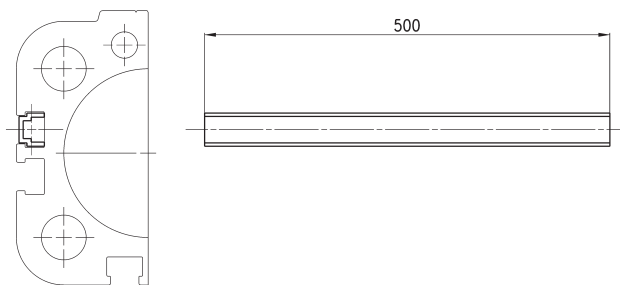
For Series 63MT cylinders mounted with guides 45NHT or 45NHB.
S-CST-45N1 is not suitable for use with Series CSG sensors.



Mod.	Cylinders Series	Ø
S-CST-45N1	90, 63MT	32 ÷ 63
S-CST-45N2	90, 63MT	80 ÷ 100

Slot cover profile suitable for actuators with T- and H-slot

Supplied with 500 mm tube



Mod.	Series of cylinders
S-CST-500	31, 31 Tandem and Multi-position, QCT, QCB, QCBT, QCBF, 61, 63MP, 6E, 5E, 69, 32, 32 Tandem and Multi-position