

Dual Rod Cylinder/Compact Type

Series CXSJ

ø6, ø10, ø15, ø20, ø25, ø32

How to Order

Port thread type

Nil	M thread	ø6 to ø25
	Rc 1/8	
TN	NPT 1/8	ø32
TF	G 1/8	

Piping

Nil	Standard (ø6 to ø32)
P	Axial (ø6, ø10)

Standard piping
Port location

Axial piping
Port location

Compact type

Bearing type

M	Slide bearing
L	Ball bushing bearing

Number of auto switches

Nil	2 pcs.
S	1 pc.
n	"n" pcs.

Made to Order
(Refer to the below.)

Auto switch

Nil	Without auto switch (with built-in magnet)
-----	--

* Refer to the below table for auto switch model numbers.

Bore size / Stroke (mm)

Bore size	Standard stroke
6	10, 20, 30, 40, 50
10	10, 20, 30, 40, 50, 75
15	
20	10, 20, 30, 40, 50, 75, 100
25	
32	

Made to Order
(For details, refer to pages 1851 to 1954.)

Symbol	Specifications
XB6	Heat resistant cylinder (–10 to 150°C)
XB13	Low speed cylinder (5 to 50 mm/s)
XC6 ^{Note)}	Made of stainless steel
XC19	Intermediate stroke (spacer)
XC22	Fluoro rubber seals

Note) Slide bearing type (M) only

Applicable Auto Switches/Refer to pages 1719 to 1827 for detailed auto switch specifications.

Type	Special function	Electrical entry	Indicator light	Wiring (output)	Load voltage			Auto switch model		Lead wire length (m)*				Pre-wired connector	Applicable load	
					DC	AC			0.5 (Nil)	1 (M)	3 (L)	5 (Z)				
													Perpendicular			
Solid state switch	—	Grommet	Yes	3-wire (NPN)	5 V, 12 V	—	M9NV	M9N	●	●	●	○	○	IC circuit	Relay, PLC	
				3-wire (PNP)			M9PV	M9P	●	●	●	○	○			
	2-wire			12 V	M9BV		M9B	●	●	●	○	○	—			
	3-wire (NPN)			5 V, 12 V	M9N WV		M9N W	●	●	●	○	○	IC circuit			
	3-wire (PNP)				M9P WV		M9P W	●	●	●	○	○				
	2-wire			12 V	M9B WV		M9B W	●	●	●	○	○	—			
	3-wire (NPN)			5 V, 12 V	M9N AV		M9N A	○	○	●	○	○	IC circuit			
	3-wire (PNP)				M9P AV		M9P A	○	○	●	○	○				
	2-wire			12 V	M9B AV		M9B A	○	○	●	○	○	—			
	Reed switch			—	Grommet		Yes	3-wire (NPN equiv.)	—	5 V	—	A96V	A96	●		—
2-wire		24 V	12 V			100 V		A93V	A93	●	—	●	—	—	—	Relay, PLC
			5 V, 12 V			100 V or less	A90V	A90	●	—	●	—	—	—	IC circuit	

* Lead wire length symbols: 0.5 m Nil (Example) M9NW
1 m M M9NWM
3 m L M9NWL
5 m Z M9NWZ

* Solid state auto switches marked with "○" are produced upon receipt of order.

- Since there are applicable auto switches other than listed, refer to page 559 for details.
- For details about switch with pre-wired connector, refer to pages 1784 and 1785.
- * Auto switches are shipped together (not assembled).

CX2

CXW

CXT

CXSJ

CXS

D-□

-X□

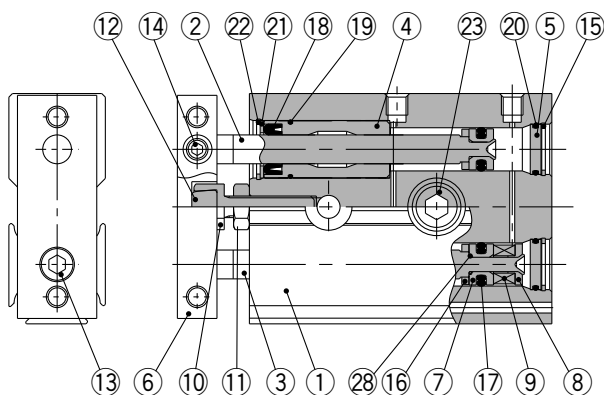
Individual

-X□

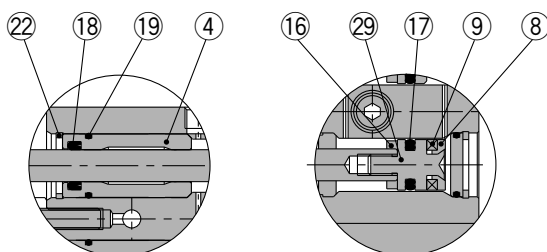
Construction: Standard Piping

CXSJM (Slide bearing)

CXSJM6



CXSJM10

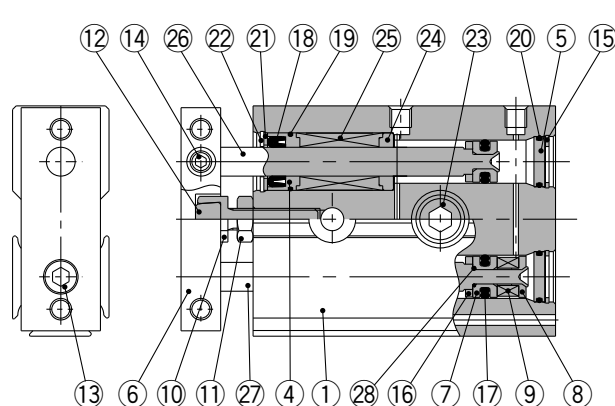


Rod cover

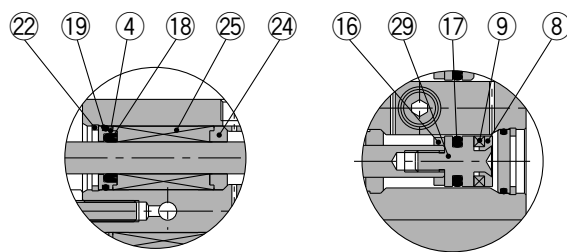
Piston rod B-side piston

CXSJL (Ball bushing bearing)

CXSJL6



CXSJL10



Rod cover

Piston rod B-side piston

Component Parts: Standard Piping

No.	Description	Material	Note
1	Housing	Aluminum alloy	Hard anodized
2	Piston rod A	Carbon steel (Note)	Hard chromium electroplated
3	Piston rod B	Carbon steel (Note)	Hard chromium electroplated
4	Rod cover	Aluminum bearing alloy	
5	Head cover	Aluminum alloy	Anodized
6	Plate	Aluminum alloy	Glossy, self-coloring hard anodized
7	Piston A	Aluminum alloy	Chromated
8	Piston B	Aluminum alloy	Chromated
9	Magnet	—	
10	Bumper bolt	Carbon steel	Nickel plated
11	Hexagon nut	Carbon steel	Nickel plated
12	Bumper	Polyurethane	
13	Hexagon socket head cap screw	Chromium steel	Nickel plated
14	Hexagon socket head set screw	Chromium steel	Nickel plated
15	Retaining ring	Special steel	Nickel plated

Note) Stainless steel for CXSJ6.

No.	Description	Material	Note
16	Bumper B	Polyurethane	
17	Piston seal	NBR	
18	Rod seal	NBR	
19	O-ring	NBR	
20	O-ring	NBR	
21	Seal retainer	Stainless steel	
22	Retaining ring B	Special steel	Nickel plated
23	Bolt holder	Stainless steel	
24	Bearing spacer	Aluminum bearing alloy	
25	Ball bushing	—	
26	Piston rod A	Special steel	Hard chromium electroplated
27	Piston rod B	Special steel	Hard chromium electroplated
28	O-ring	NBR	
29	Piston C	Stainless steel	
30	Bumper holder	Resin	

Replacement Parts/ Seal Kit

Model	Seal kit no.	Contents
CXSJM6	CXSJM6-PS	Set of nos. above 17, 18, and 20
CXSJL6	CXSJL6-PS	
CXSJM10	CXSJM10-PS	
CXSJL10	CXSJL10-PS	

* Seal kit includes 17, 18, and 20. Order the seal kit, based on each bore size.

* Since the seal kit does not include a grease pack, order it separately.

Grease pack part no.: GR-S-010 (10 g)

CX2

CXW

CXT

CXSJ

CXS

D-□

-X□

Individual
-X□