

Compact Cylinder with Lock Double Acting, Single Rod Series *CLQ*

ø20, ø25, ø32, ø40, ø50, ø63, ø80, ø100

How to Order

CLQ B 40 - 30 D - F -

With auto switch **CDLQ B 40 - 30 D - F - M9BW -**

With auto switch
(Built-in magnet)

Mounting style

ø20, ø25 ø32 to ø100

B	Through-hole/ Both ends tapped common (Standard)	B	Through-hole (Standard)
L	Foot style	A	Both ends tapped style
F	Rod side flange style	L	Foot style
G	Head side flange style	F	Rod side flange style
D	Double clevis style	G	Head side flange style
		D	Double clevis style

* Mounting bracket is shipped together, (but not assembled).

Bore size

20	20 mm	50	50 mm
25	25 mm	63	63 mm
32	32 mm	80	80 mm
40	40 mm	100	100 mm

Built-in Magnet Cylinder Model
If a built-in magnet cylinder without an auto switch is required, there is no need to enter the symbol for the auto switch.
(Example) CDLQL32-30D-B

Port thread type

Nil	Rc,M (ø20, ø25)
TN	NPT
TF	G

Auto switch
Nil Without auto switch
* For the applicable auto switch model, refer to the table below.

Locking direction

F	Extension locking
B	Retraction locking

Number of auto switches

Nil	2 pcs.
S	1 pc.
n	"n" pcs.

Made to Order
Refer to page 817 for details.

Body option

Nil	Standard (Rod end female thread)
C	With rubber bumper
M	Rod end male thread
CM	With rubber bumper, Rod end male thread

Action
D Double acting

Cylinder stroke (mm)
For "Standard strokes" and "Manufacture of Intermediate of Stroke", refer to page 817.

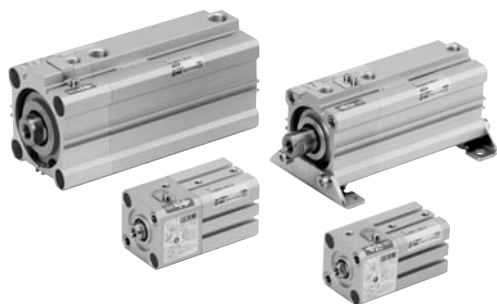
Applicable Auto Switch/Refer to pages 1719 to 1827 for detailed specifications of auto switches.

Type	Special function	Electrical entry	Indicator light	Wiring (Output)	Load voltage		Auto switch model				Lead wire length (m)					Pre-wired connector	Applicable load		
					DC	AC	Perpendicular		In-line		0.5 (Nil)	1 (M)	3 (L)	5 (Z)	None (N)				
							ø20, ø25	ø32 to ø100	ø20, ø25	ø32 ø40 to ø100									
Solid state switch	—	Grommet	Yes	3-wire (NPN)	24 V	5 V,	—	M9NV		M9N		●	●	●	○	—	○	IC circuit	Relay, PLC
		3-wire (PNP)		12 V		M9PV		M9P		●	●	●	○	—	○				
		2-wire		12V		M9BV		M9B		●	●	●	○	—	○				
	Diagnostic indication (2-color indication)	Grommet		—	J79C		—		●	—	●	●	●	—	—	IC circuit			
				3-wire (NPN)	5 V,	M9NWV		M9NW		●	●	●	○	—	○				
				3-wire (PNP)	12 V	M9PWV		M9PW		●	●	●	○	—	○				
				2-wire	12 V	M9BWV		M9BW		●	●	●	○	—	○				
				3-wire (NPN)	5 V,	M9NAV		M9NA		○	○	●	○	—	○				
				3-wire (PNP)	12 V	M9PAV		M9PA		○	○	●	○	—	○				
				2-wire	12 V	M9BAV		M9BA		○	○	●	○	—	○				
				4-wire	5 V, 12 V	—		—		F79F	●	—	●	○	—		○		
				2-wire (Non-polar)	—	—		—		P4DW	—	—	●	●	—		○		
Reed switch	—	Grommet	Yes	3-wire (NPN equivalent)	24 V	5 V	—	A96V		A96		●	—	●	—	—	—	IC circuit	Relay, PLC
						—	200V	—	A72	—	A72H	●	—	●	—	—	—		
						12 V	100V	A93V		A93		●	—	●	—	—	—		
						5 V, 12 V	100 V or less	A90V		A90		●	—	●	—	—	—		
	Diagnostic indication (2-color indication)	Grommet	None			12 V	—	A73C		—		●	—	●	●	●	—	—	
						12 V	—	A80C		—		●	—	●	●	●	—	—	
						5 V, 12 V	24 V or less	A79W		—		●	—	●	—	—	—		
						—	—	—		—		●	—	●	—	—	—		

* Lead wire length symbols: 0.5 m Nil (Example) M9NV
1 m M (Example) M9NWM
3 m L (Example) M9NWL
5 m Z (Example) M9NWX
None N (Example) J79CN

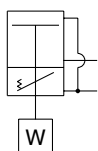
* Solid state auto switches marked with "○" are produced upon receipt of order.
* D-P4DWL is compatible with ø40 to ø100.
* D-P4DW is assembled at the time of shipment.

* Since there are other applicable auto switches than listed, refer to page 837 for details.
* For details about auto switches with pre-wired connector, refer to pages 1784 and 1785.
* When D-A9□(V)/M9□(V)/M9□A(V)/M9□A(V)L types with ø32 to ø50 are mounted on a side other than the port side, order auto switch mounting brackets separately. Refer to page 836 for details.
* When mounting brackets (foot/head side flange/double clevis style) are used, then in some cases auto switches cannot be retrofitted.

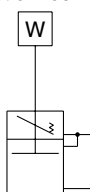


JIS Symbol

Extension locking



Retraction locking



Made to Order Specifications

(For details, refer to pages 1836 and 1926.)

Symbol	Specifications
—XA□	Change of rod end shape
—XC35	With coil scraper (ø40 to ø100 only)

Cylinder Specifications

Bore size (mm)	20	25	32	40	50	63	80	100
Action	Double acting, Single rod							
Fluid	Air							
Proof pressure	1.5 MPa							
Maximum operating pressure	1.0 MPa							
Minimum operating pressure	0.2 MPa <small>Note 1)</small>							
Ambient and fluid temperature	Without auto switch: -10 to 70°C (No freezing) With auto switch: -10 to 60°C (No freezing)							
Lubrication	Non-lube							
Piston speed	50 to 500 mm/s							
Stroke length tolerance	$+1.0$ 0 mm <small>Note 2)</small>							
Cushion	None, rubber bumper							
Port size (Rc, NPT, G)	M5 x 0.8	1/8		1/4		3/8		

Note 1) The minimum operating pressure of the cylinder is 0.1 MPa when the cylinder and lock are connected to separate ports.

Note 2) Stroke length tolerance does not include the amount of bumper change.

Lock Specifications

Bore size (mm)	20	25	32	40	50	63	80	100
Locking action	Spring locking (Exhaust locking)							
Unlocking pressure	0.2 MPa or more							
Lock starting pressure	0.05 MPa or less							
Locking direction	One direction (Either extension locking or retraction locking)							
Unlocking port size	Rc	M5 x 0.8	1/8				1/4	
	NPT	—	1/8				1/4	
	G	—	M5 x 0.8				1/8 1/4	
Holding force (N) (Maximum static load)	157	245	402	629	982	1559	2513	3927
	Equivalent to 0.5 MPa							

Note) Be sure to select cylinders referring page 812.

Standard Stroke

Bore size (mm)	Standard stroke (mm)
20, 25	5, 10, 15, 20, 25, 30, 35, 40, 45, 50
32, 40, 50, 63, 80, 100	10, 15, 20, 25, 30, 35, 40, 45, 50, 75, 100

Manufacture of Intermediate Stroke

Description	Spacer is installed in the standard stroke body.	
Part no.	Refer to "How to Order" for the standard model no. on page 816.	
Method	Dealing with the stroke by the 1 mm interval is available by installing spacer with standard stroke cylinder.	
Stroke range	Bore size (mm)	Stroke range (mm)
	20, 25	1 to 50
	32, 40, 50, 63, 80, 100	1 to 100
Example	Part no.: CLQB40-47D-B 3 mm spacer is installed in standard cylinder CLQB40-50D-B. B dimension is 79.5 mm.	

Note) ø40 to ø100 bumper spacers with intermediate strokes can be manufactured in 5 mm increments from 55 to 95 mm.

CLJ2

CLM2

CLG1

CL1

MLGC

CNG

MNB

CNA

CNS

CLS

CLQ

RLQ

MLU

MLGP

ML1C

D-□

-X□

Individual
-X□