

# Antistatic One-touch Fittings

## Series KA

One-touch fitting with antistatic prevention

One-touch IN/OUT connection.

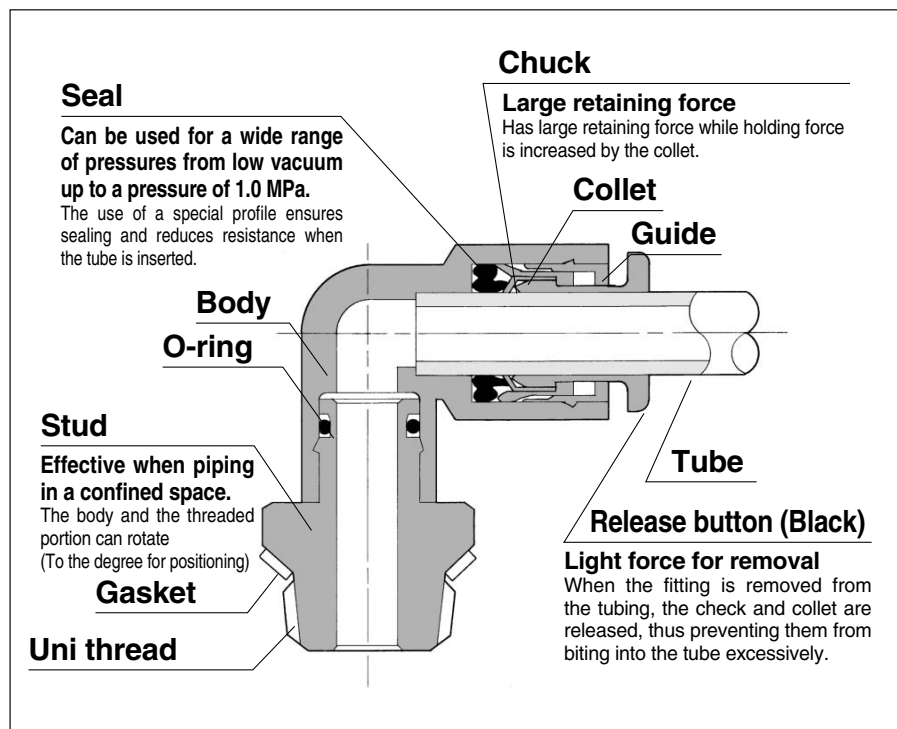
Possible to use from vacuum (–100 kPa).

Can be used in copper-free application.

Flame resistance (Equivalent to UL-94 standard, material V-0)

Surface resistance  $10^4$  to  $10^7 \Omega$

Conductive resin is used for body and seals in fittings and tubing.



### Principal Parts Material

Body	C3604BD, PBT
Stud	C3604BD
Chuck	Stainless steel 304
Guide	Stainless steel 304, C3604BD, PBT
Collet, Release button	PBT
Seal, O-ring	NBR

- C3604BD is all electroless nickel plated.
- PBT parts have conductive ( $10^4$  to  $10^7 \Omega$ ) and flame resistant applications. (UL-standard, V-0)
- Conductive NBR ( $10^4$  to  $10^7 \Omega$ ) is used for seals.

### Applicable Tubing

Tubing material	Antistatic soft nylon, Polyurethane
Tubing O.D.	$\phi 3.2$ , $\phi 4$ , $\phi 6$ , $\phi 8$ , $\phi 10$ , $\phi 12$

### Specifications

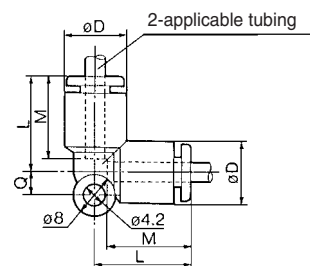
Fluid	Air
Maximum operating pressure	1.0 MPa
Operating vacuum pressure	–100 kPa
Proof pressure	3.0 MPa
Ambient and fluid temperature	0 to 40°C
Thread	Uni thread JIS B 0209 Class 2 (Metric coarse thread)
Seal (Thread portion)	Gasket
Copper-free	Brass parts are all electroless nickel plated.
Surface resistance	$10^4$ to $10^7 \Omega$

# Series KA

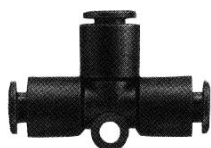
## Union Elbow: KAL



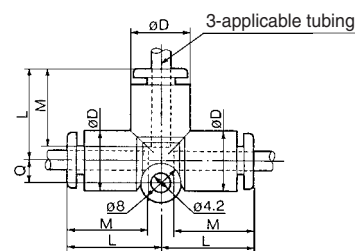
Applicable tubing O.D. (mm)	Model	øD	L	Q	M	Effective area (mm <sup>2</sup> )		Weight (g)
						Soft nylon	Urethane	
3.2	KAL23-00	9.6	17.5	4.3	15.5	3.4	2.9	3
4	KAL04-00	10.4	18	4.5	16	4.2	4.2	6
6	KAL06-00	12.8	20	5.3	17	11.4	11.4	6
8	KAL08-00	15.2	23	6	18.5	14.9	14.9	10
10	KAL10-00	18.5	26.5	6.8	21	25.0	25.0	17
12	KAL12-00	20.9	28.5	7.5	22	39.7	39.7	21



## Union Tee: KAT



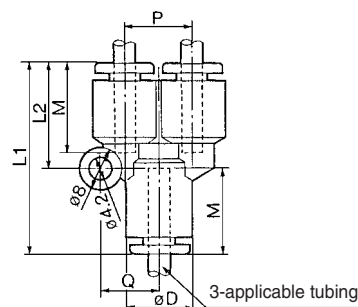
Applicable tubing O.D. (mm)	Model	øD	L	Q	M	Effective area (mm <sup>2</sup> )		Weight (g)
						Soft nylon	Urethane	
3.2	KAT23-00	9.6	17.5	4.3	15.5	3.4	2.9	5
4	KAT04-00	10.4	18	4.5	16	6.4	6.9	7
6	KAT06-00	12.8	20	5.3	17	13.4	13.4	10
8	KAT08-00	15.2	23	6	18.5	17.7	17.7	15
10	KAT10-00	18.5	26.5	6.8	21	28.4	28.4	25
12	KAT12-00	20.9	28.5	7.5	22	45.4	45.4	29



## Union "Y": KAU



Applicable tubing O.D. (mm)	Model	øD	L1	L2	P	Q	M	Effective area (mm <sup>2</sup> )		Weight (g)
								Soft nylon	Urethane	
3.2	KAU23-00	9.6	33	17.5	9.6	9	15.5	3.4	2.9	5
4	KAU04-00	10.4	34	18	10.4	9.7	16	4.2	4.2	7
6	KAU06-00	12.8	37	20	12.8	11.7	17	13.4	13.4	9
8	KAU08-00	15.2	42.5	24.5	15.2	13.7	18.5	17.7	17.7	11
10	KAU10-00	18.5	48	27.5	18.5	16.1	21	28.4	28.4	16
12	KAU12-00	20.9	51	30	20.9	18.1	22	45.4	45.4	23



## Plug-in Reducer: KAR



Applicable tubing O.D. (mm)	Applicable fitting size ød	Model	øD	L	A	M	Effective area (mm <sup>2</sup> )		Weight (g)
							Soft nylon	Urethane	
3.2	4	KAR23-04	9.6	33.5	18.5	15.5	3.4	2.9	5
4	6	KAR04-06	10.4	34.5	17.5	16	5.6	5.6	1.8
	8	KAR04-08		36.5	18				2.0
	10	KAR04-10	12.8	39.5	18.5				3.3
6	8	KAR06-08	12.8	37	18.5	17	13.1	13.1	2.5
	10	KAR06-10		39.5					3.0
	12	KAR06-12		42	20				4.7
8	10	KAR08-10	15.2	41	20	18.5	18.0	18.0	4.0
	12	KAR08-12		42					4.6
10	12	KAR10-12	18.5	44.5	20	21	32.8	32.8	33

