



The Timken Company

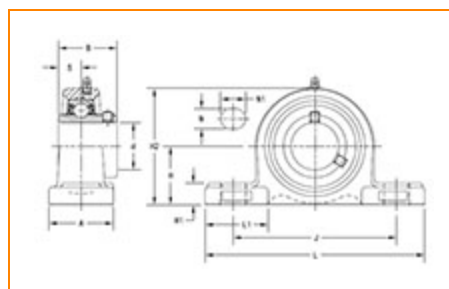
4500 Mt Pleasant St. NW

N. Canton, OH 44720

Phone: (234) 262-3000

E-Mail: CustomerCAD@timken.com • **Web site:** www.timken.com

Part Number UCP321, UCP 300 Pillow Block Mounted Bearings - Set Screw Locking



[Specifications](#) | [Dimensions](#) | [Basic Load Ratings](#)

Specifications

Bearing Number	UC321
Shaft Size d	105 mm
Locking Style	Set Screw Locking
Housing Construction	Two-Bolt Pillow Block

Dimensions

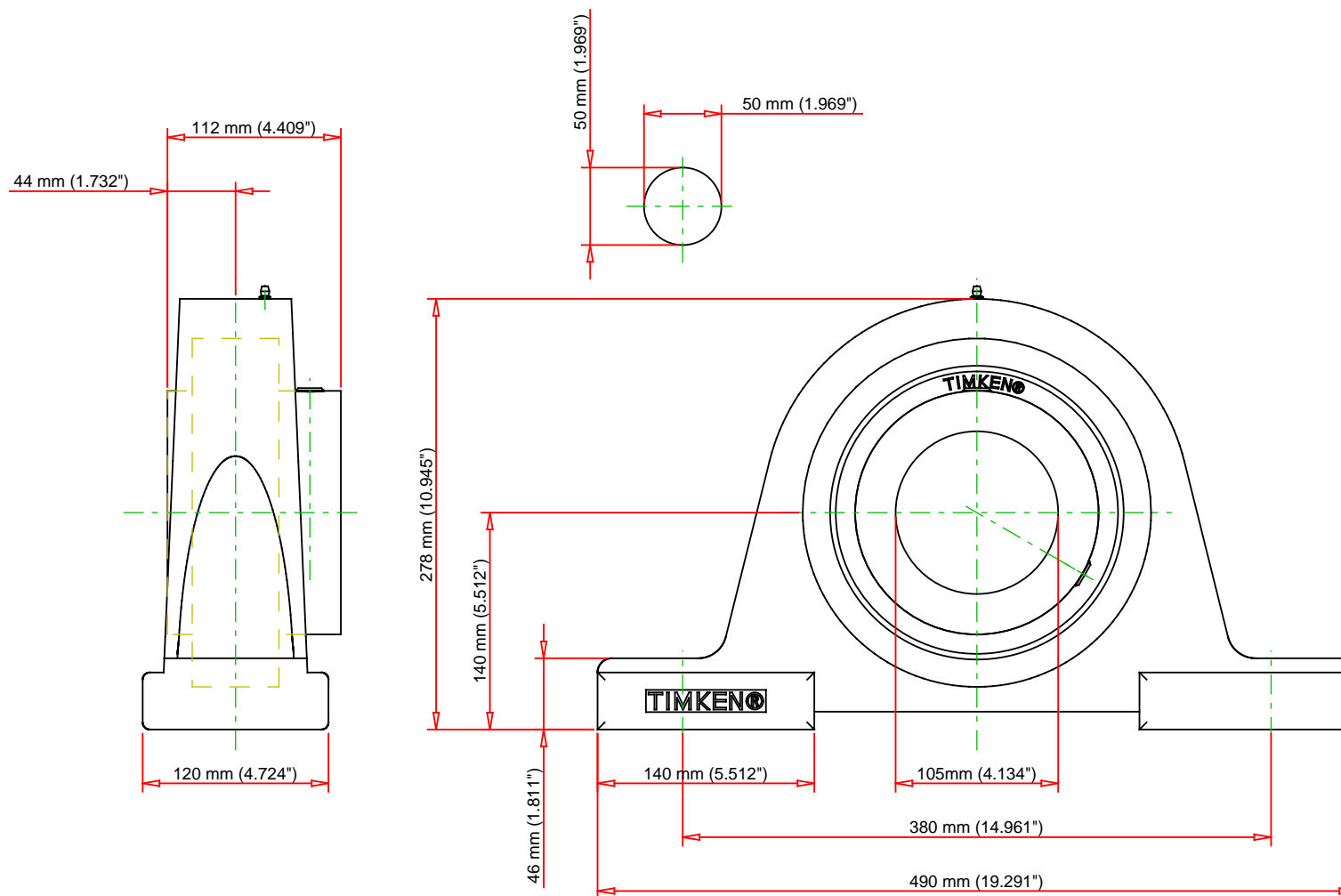
Base to Center Height H	140 mm 5.512 in
Total Length L	490 mm 19.291 in
Housing Width A	120 mm 4.724 in
Bolt Hole Spacing J	380 mm 14.961 in



Bolt Hole Size N	50 mm 1.969 in
Bolt Hole Length N1	50 mm 1.969 in
Foot Height H1	46 mm
Total Height H2	278 mm 10.945 in
Dimension L1	140 mm 5.512 in
Inner Ring Width B	112 mm 4.409 in
Center of Bearing from End S	44 mm 1.732 in

Basic Load Ratings

Static Load Rating	153000 N 34396 lbf
Dynamic Load Rating	184000 N 41365 lbf



Bearing Number	UC321			
Load Ratings - C _r	41365	lbf	184000	N
Load Ratings - C _{0r}	34396	lbf	153000	N
Weight	82.9	lb	37.6	kg
Bolt Size	N/A			

TIMKEN

THE TIMKEN COMPANY
NORTH CANTON, OHIO USA

UCP321

UCP 300 Pillow Block Mounted Bearings -
Set Screw Locking

Every reasonable effort has been made to ensure the accuracy of the information contained in this writing, but no liability is accepted for errors, omissions or for any other reason.

FOR DISCUSSION ONLY