

Strut Framework System

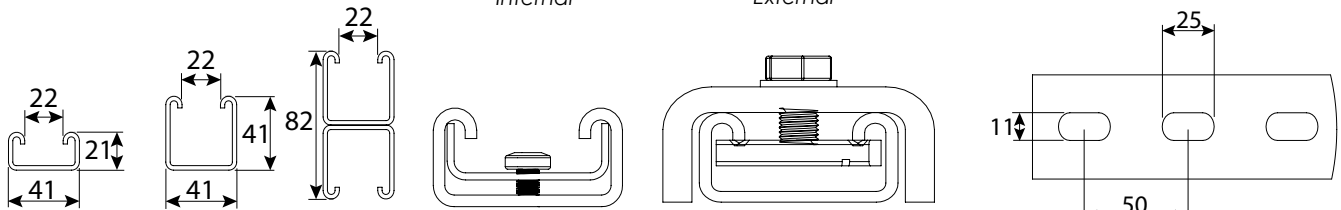
TS21P-3
TS21S-3

TS41P-3
TS41S-3

Back to Back

Couplers

Slotted strut hole dimensions



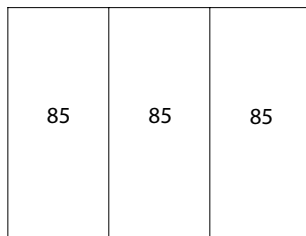
Material: 2.5mm thick cold rolled steel (also available in 1.5mm)

Length 3.0m

Service Boxes & Plates

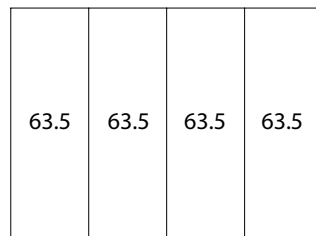
Service Box Compartment Options

3 Compartment (mm)



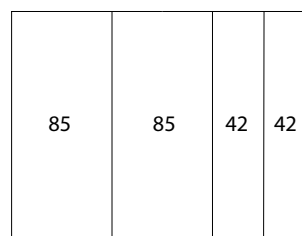
CSB3, CSB3/S, FSB3, CSB3/ED

4 Compartment 1 (mm)



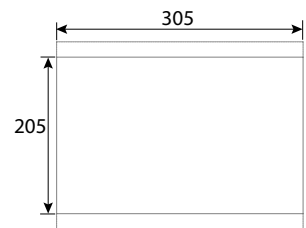
CSB4/SL

4 Compartment 2 (mm)

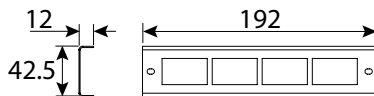


CSB4, CSB4/S, FSB4, CSB4/ED

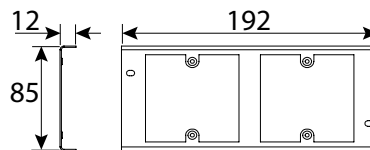
Floor Cut Out Aperture



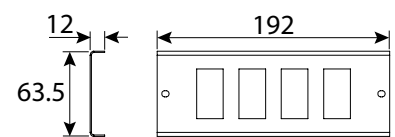
Half Width Service Plates



Full Width Service Plates

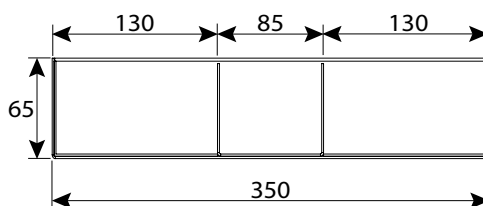


SL Style Service Plates

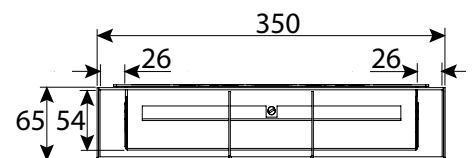


Flush Screed Modular Trunking

Flush Screed Modular Cross Section



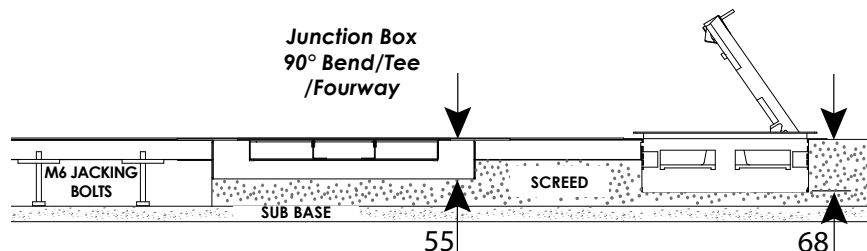
Flush Screed Modular Service Box



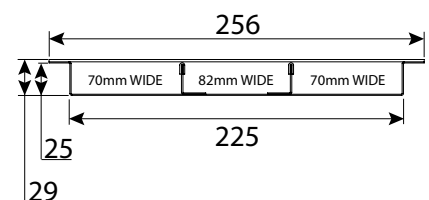
Flush screed modular trunking must be fully supported across its complete width.

Flush Screed Trunking

Three Compartment Service Box



Flush Screed Cross Section



Screed trunking must be fully supported across its complete width.

The minimum screed depth is 68mm.

Service boxes should be installed when the trunking is fitted

Please see technical details for Service Boxes above.