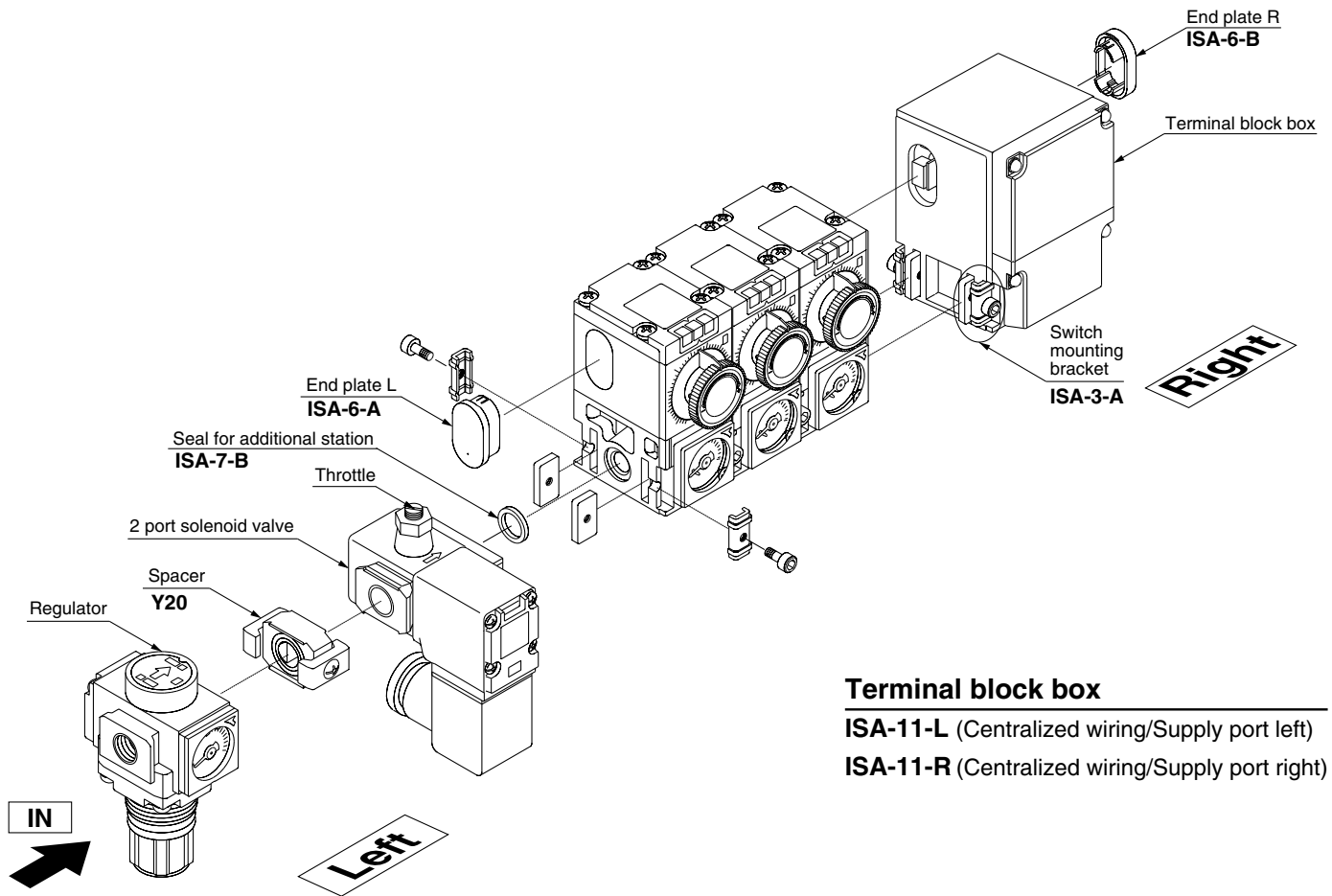


Parts List



Terminal block box

ISA-11-L (Centralized wiring/Supply port left)

ISA-11-R (Centralized wiring/Supply port right)

ZSE
ISE

ZSP

PS

ISA

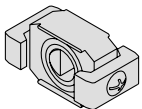
PSE

IS

ISG

ZSM

Spacer Y20



Seal for additional station ISA-7-B

When 2 air catch sensors are connected or when a 2 port solenoid valve is connected to the left:



ISA-7-A

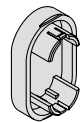
When a 2 port solenoid valve is connected to the right:



End plate L ISA-6-A



End plate R ISA-6-B



Joint bracket ISA-3-A

A pair consists 1 set.



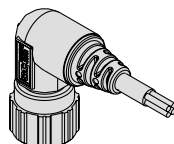
Lead wire with connector (Individual wiring type) ISA-8-A

Straight, 5 m

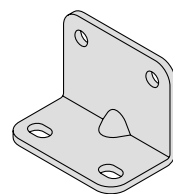


ISA-8-B

Right angle, 5 m



Bracket ISA-4-A



With mounting screw 2 pcs.

DIN rail mounting bracket ISA-9-A

