

# Self-Lube® product range

NSK manufactures several ranges of mounted units. These include Self-Lube®, our recognized standard, and recently introduced ranges such as Silver-Lube®, Life-Lube® and Molded-Oil™ units. In each type, there are two basic components, the insert and the housing.

## Self-Lube® bearing inserts

The Self-Lube® bearing insert, commonly known as a wide inner ring bearing, is designed to suit the wide range of housings offered by NSK in the Self-Lube® bearing family and is also suitable for applications where the user's own housing is preferred.

They are basically deep-groove ball bearings, to the popular 6200 series configuration, with integral design features making them more functional and versatile than standard ball bearings. The radial internal clearance is C3 for standard bearing inserts and bearings can be offered with either parallel or spherical outside diameter outer rings with the latter being the type fitted in the bearing unit. The integral design features of the bearing insert, such as shaft locking, sealing and lubrication, are explained in the following pages.

## Self-Lube® bearing units

The range of Self-Lube® bearing units offers a wide choice of cast iron, pressed steel, synthetic rubber, thermoplastic or stainless steel housings fitted with spherical outside diameter Self-Lube® bearing inserts. They will generally accommodate initial housing misalignment up to 0.030 radians but are not recommended for running misalignment in excess of 0.001 radians. The general housing types are pillow blocks, flange units, take-up units, cartridge units and hanger units. Choice is very much

determined by the requirements of the application, although the aesthetic appearance of the machine design is often an important consideration. Self-Lube® units have been designed to meet the needs of both criteria.

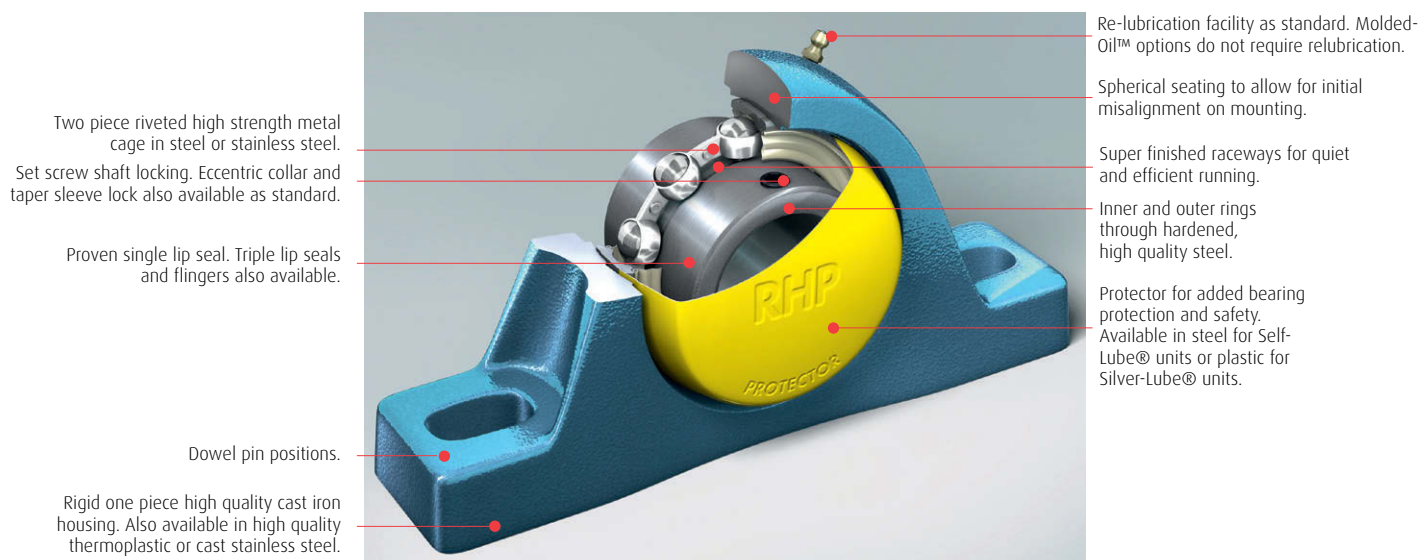
- › Cast iron unit castings are made from high-quality cast iron, and finished on unmachined surfaces with an electrostatic air-drying paint.
- › Pressed steel housings are made from mild steel strip, and are zinc plated.
- › Thermoplastic housings are moulded in highgrade PBT, a high quality thermoplastic polyester resin.
- › Stainless steel housings are made from austenitic stainless steel castings (SCS13).

## Additional products

NSK recognizes the need for 'tailor made' solutions and is always willing to help customers who have a requirement for something out of the ordinary.

## Dynamic load ratings

The NSK dynamic load ratings given in this catalog and the relationship between these and bearing fatigue life are based on ISO standard 281.

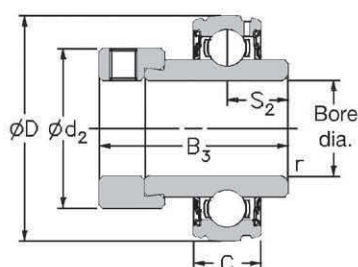


# Self-Lube<sup>®</sup> bearing inserts

## 1000DECG and 1100DEC Series

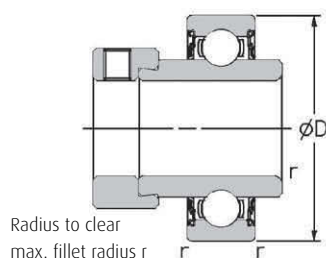
### 1000DECG

With spherical outside diameter and eccentric collar lock



### 1100DEC

With parallel outside diameter and eccentric collar lock



Shaft diameter		RHP designation		Dimensions (mm)						ISO Load ratings		Rec. max. speed	Mass (approx.)
mm	inches	1000DECG Series	1100DEC Series	D	C	B3	s2	d2	r	dynamic Cr newtons	static Cor newtons	rev/min	kg
20		1020-20DECG	1120-20DEC	47.000	14.00	43.73	17.13	33.30	1.00	12800	6650	6700	0.20
	3/4	1020-3/4DECG	1120-3/4DEC										
25		1025-25DECG	1125-25DEC	52.000	15.00	44.43	17.53	38.10	1.00	14000	7880	6250	0.26
	7/8	1025-7/8DECG	1125-7/8DEC										
	15/16	1025-15/16DECG	1125-15/16DEC										
	1	1025-1DECG	1125-1DEC										
30		1030-30DECG	1130-30DEC	62.000	16.00	48.43	18.33	44.50	1.00	19500	11300	5300	0.53
	1 1/8	1030-1 1/8DECG	1130-1 1/8DEC										
	1 3/16	1030-1 3/16DECG	1130-1 3/16DEC										
	1 1/4	1030-1 1/4DECG	1130-1 1/4DEC										
35		1035-35DECG	1135-35DEC	72.000	17.00	51.13	18.83	55.60	1.00	25700	15300	4500	0.70
	1 1/4	1035-1 1/4DECG	1135-1 1/4DEC										
	1 3/8	1035-1 3/8DECG	1135-1 3/8DEC										
	1 7/16	1035-1 7/16DECG	1135-1 7/16DEC										
40		1040-40DECG	1140-40DEC	80.000	18.00	56.33	21.43	60.30	1.00	32500	19900	4000	0.82
	1 1/2	1040-1 1/2DECG	1140-1 1/2DEC										
45		1045-45DECG	1145-45DEC	85.000	19.00	56.33	21.43	63.50	1.00	32500	20500	3700	1.08
	1 5/8	1045-1 5/8DECG	1145-1 5/8DEC										
	1 11/16	1045-1 11/16DECG	1145-1 11/16DEC										
	1 3/4	1045-1 3/4DECG	1145-1 3/4DEC										
50		1050-50DECG	1150-50DEC	90.000	20.00	62.73	24.64	69.90	1.00	35000	23200	3400	1.19
	1 7/8	1050-1 7/8DECG	1150-1 7/8DEC										
	1 15/16	1050-1 15/16DECG	1150-1 15/16DEC										
55		1055-55DECG	1155-55DEC	100.000	21.00	71.42	27.84	76.20	1.50	43500	29200	3100	1.40
	2	1055-2DECG	1155-2DEC										
	2 1/8	1055-2 1/8DECG	1155-2 1/8DEC										
	2 1/16	1055-2 1/16DECG	1155-2 1/16DEC										
60		1060-60DECG	1160-60DEC	110.000	22.00	77.84	31.04	84.20	1.50	48000	33000	2800	1.72
	2 1/4	1060-2 1/4DECG	1160-2 1/4DEC										
	2 3/8	1060-2 3/8DECG	1160-2 3/8DEC										
	2 7/16	1060-2 7/16DECG	1160-2 7/16DEC										
	2 1/2	1065-2 1/2DECG	1165-2 1/2DEC	120.000	23.00	85.74	34.14	92.00	1.50	57500	40000	2600	2.21
65		1070-65DECG	1170-65DEC	125.000	24.00	85.74	34.14	97.00	1.50	61000	45000	2450	2.56
70		1070-70DECG	1170-70DEC										
	2 1/2	1070-2 1/2DECG	1170-2 1/2DEC										
	2 5/8	1070-2 5/8DECG	1170-2 5/8DEC										
	2 11/16	1070-2 11/16DECG	1170-2 11/16DEC										
65		1075-65DECG	1175-65DEC	130.000	25.00	92.14	37.34	102.00	1.50	66000	49500	2300	2.94
70		1075-70DECG	1175-70DEC										
75		1075-75DECG	1175-75DEC										
	2 11/16	1075-2 11/16DECG	1175-2 11/16DEC										
	2 3/4	1075-2 3/4DECG	1175-2 3/4DEC										
	2 7/8	1075-2 7/8DECG	1175-2 7/8DEC										
	2 15/16	1075-2 15/16DECG	1175-2 15/16DEC										

Please check availability