

MINIATURE CIRCUIT BREAKER TECHNICAL DATA SHEET

Spartex



Simply place over the breaker and tighten the internal grub screw. Once secure fit a padlock or appropriate hasp through the hole to prevent unauthorised removal.

Benefits of Mini Circuit Breaker Lockout

- Maximum clamping size $\leq 6\text{mm}$
- Single Padlock Locking
- Grub screw included

Product Specification

Description: Miniature Circuit Breaker

Material: Aluminium

Colours: Gold

Clamp Size **Code**
 $\leq 6\text{mm}$ LOK161

Alternate products:

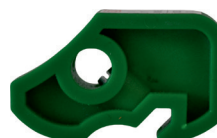
Contact us for more
Lockout Tagout products.



Universal MCB
LOK043



Universal MCB
LOK141



Universal MCB
LOK138



Fuse Lockout
LOK140

SPARTEX, exclusively available from Rubix, Europe's largest supplier of industrial products.
All your essentials covered with guaranteed availability for any European site, at a quality that gets the job done.
With branches nationwide we're just down the road.

Call **0870 240 2100** from a landline to be transferred to your nearest branch
or visit **uk.rubix.com** to search for your nearest branch and their contact details