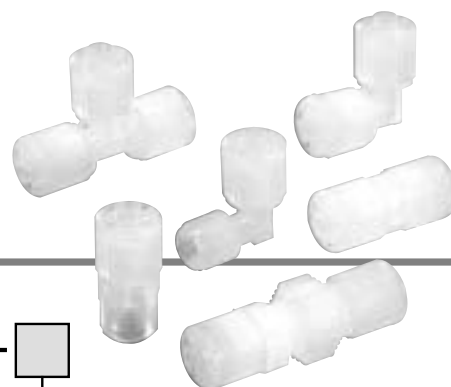


High Purity Fluoropolymer Fittings

HYPER FITTING®

Series LQ1



How to Order

Threaded connection

LQ1 **H** **11** **—** **M** **—** **—**

Fitting type

Symbol	Type
H	Connector
L	Elbow
B	Branch tee
R	Run tee

Thread type

Symbol	Type
Nil	R, Rc
N	NPT

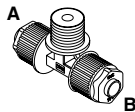
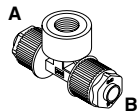
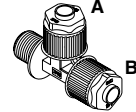
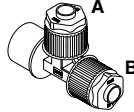
Piping type

Symbol	Type
M	Male
F	Female

Packaging

Nil	Clean packaging equivalent to Class M3.5
1	Standard packaging equivalent to Class M5.5

For different diameter (on B side)

Symbol	Application
Nil	Same tubing size
Refer to the applicable tubing table.	Different diameter tubing can be selected within the same body class.
LQ1B	
Branch tee male	Branch tee female
	
LQ1R	
Run tee male	Run tee female
	



The table of combination is the same as that for A side.

Note 1) Only branch tees and run tees can take different diameters.

Note 2) Use of different diameters is not available with size 1.

Size combination

Class	No.	Applicable tubing size (mm)	Tubing O.D.
1	1	4 x 3	1/8"
1	2	3 x 2	
2	1	6 x 4	1/8"
2	2	4 x 3	
2	3	6 x 4	1/4"
2	4	4 x 3	
3	1	10 x 8	1/4"
3	2	8 x 6	
3	3	6 x 4	3/8"
3	4	10 x 8	
3	5	8 x 6	3/8"
3	6	6 x 4	
4	1	12 x 10	3/8"
4	2	10 x 8	
4	3	12 x 10	1/2"
4	4	10 x 8	
5	1	19 x 16	1/2"
5	2	12 x 10	
5	3	19 x 16	3/4"
5	4	12 x 10	
6	1	25 x 22	3/4"
6	2	19 x 16	
6	3	25 x 22	1"
6	4	19 x 16	

Class	No.	Applicable tubing size (inch)	Tubing O.D.
1	A	1/8" x 0.086"	1/8"
—	—	—	—
2	A	1/4" x 5/32"	1/8"
2	B	3/16" x 1/8"	
2	C	1/8" x 0.086"	
2	D	1/4" x 5/32"	1/4"
2	E	3/16" x 1/8"	
2	F	1/8" x 0.086"	
3	A	3/8" x 1/4"	1/4"
3	B	1/4" x 5/32"	
3	C	3/8" x 1/4"	
3	D	1/4" x 5/32"	3/8"
4	A	1/2" x 3/8"	
4	B	3/8" x 1/4"	
4	C	1/2" x 3/8"	1/2"
4	D	3/8" x 1/4"	
5	A	3/4" x 5/8"	1/2"
5	B	1/2" x 3/8"	
5	C	3/4" x 5/8"	
5	D	1/2" x 3/8"	3/4"
6	A	1" x 7/8"	
6	B	3/4" x 5/8"	
6	C	1" x 7/8"	1"
6	D	3/4" x 5/8"	



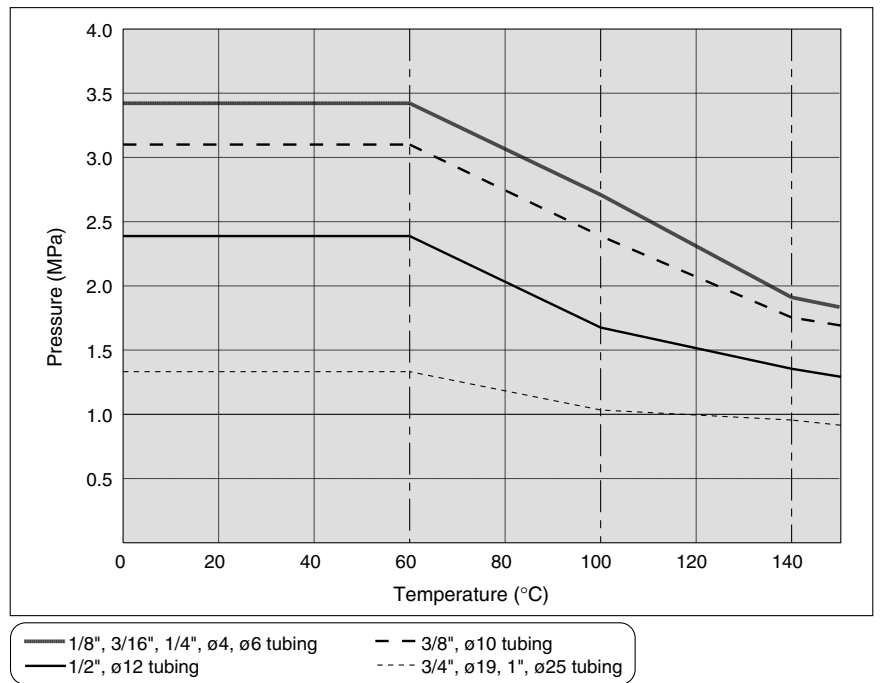
Note) For each body class, the second and later numbers or symbols indicate reducing. However, in case of size 1, the tubing cannot be changed by reducing.



Specifications

Feature \ Model	LQ1□10	LQ1□20	LQ1□30	LQ1□40	LQ1□50	LQ1□60
Material	NEW PFA					
Maximum operating pressure (at 20°C)	0.7 MPa					
Proof pressure	Refer to the withstand pressure and heat resistance performance curves.					
Operating temperature	0 to 150°C					

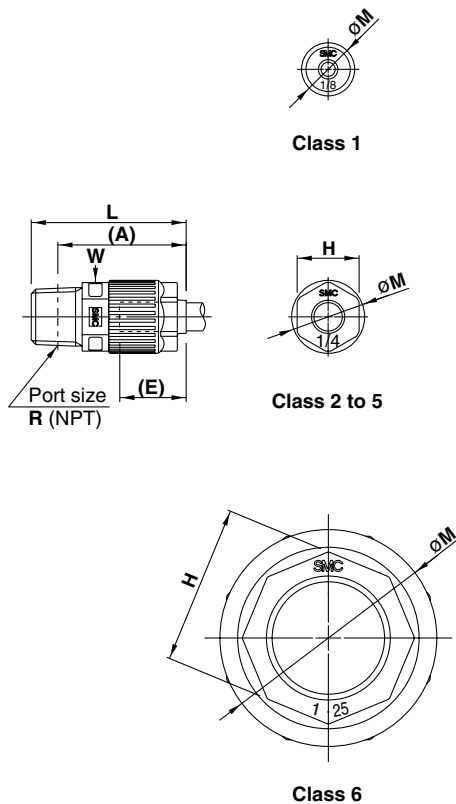
Burst Pressure and Heat Resistance Performance



Series LQ1

Dimensions

Male Connector: LQ1H-M



(A) shows the reference dimension after connection.
 (E) shows the approximate dimension of the inserted tubing from the end of the nut.
 "W" is width across flats dimension.

Metric sizes

Model	Applicable tubing O.D.	Connection threads R/NPT	A	E	H	L	M	W
LQ1H11-M□	ø4	1/8"	21	10	—	25	11.5	10
LQ1H12-M□	ø3							
LQ1H21-M□	ø6	1/8"	31.5	15	14	35	16.5	14
LQ1H22-M□	ø4							
LQ1H23-M□	ø6	1/4"	29					
LQ1H24-M□	ø4							
LQ1H31-M□	ø10	1/4"	36.5	20	17	42.5	23	19
LQ1H32-M□	ø8							
LQ1H33-M□	ø6	3/8"	36					
LQ1H34-M□	ø10							
LQ1H35-M□	ø8	3/8"	46	24	21	52	28	23
LQ1H36-M□	ø6							
LQ1H41-M□	ø12	1/2"	44					
LQ1H42-M□	ø10							
LQ1H43-M□	ø12	1/2"	55	29	26	62.5	39	32
LQ1H44-M□	ø10							
LQ1H51-M□	ø19	3/4"	53.5					
LQ1H52-M□	ø12							
LQ1H53-M□	ø19	3/4"	72	39.5	36	81	49	46
LQ1H54-M□	ø12							
LQ1H61-M□	ø25	1"	71					
LQ1H62-M□	ø19							
LQ1H63-M□	ø25	1"						
LQ1H64-M□	ø19							

Inch sizes

Model	Applicable tubing O.D.	Connection threads Rc/NPT	A	E	H	L	M	W
LQ1H1A-M□	1/8"	1/8"	21	10	—	25	11.5	10
LQ1H2A-M□	1/4"	1/8"	31.5	15	14	35	16.5	14
LQ1H2B-M□	3/16"							
LQ1H2C-M□	1/8"	1/4"	29					
LQ1H2D-M□	1/4"							
LQ1H2E-M□	3/16"	1/4"	46	24	21	52	28	23
LQ1H2F-M□	1/8"							
LQ1H3A-M□	3/8"	1/4"	36.5					
LQ1H3B-M□	1/4"							
LQ1H3C-M□	3/8"	3/8"	36	20	17	42.5	23	19
LQ1H3D-M□	1/4"							
LQ1H4A-M□	1/2"	3/8"	46	24	21	52	28	23
LQ1H4B-M□	3/8"							
LQ1H4C-M□	1/2"	1/2"	44					
LQ1H4D-M□	3/8"							
LQ1H5A-M□	3/4"	1/2"	55	29	26	62.5	39	32
LQ1H5B-M□	1/2"							
LQ1H5C-M□	3/4"	3/4"	53.5					
LQ1H5D-M□	1/2"							
LQ1H6A-M□	1"	3/4"	72	39.5	36	81	49	46
LQ1H6B-M□	3/4"							
LQ1H6C-M□	1"	1"	71					
LQ1H6D-M□	3/4"							